

Product datasheet for **TA500402AM**

Melanoma gp100 (PMEL) Mouse Monoclonal Antibody (Biotin conjugated) [Clone ID: OTI8A4]

Product data:

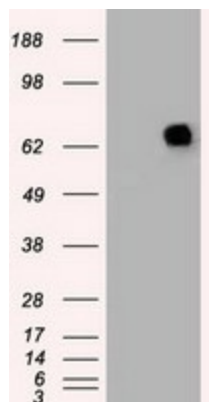
Product Type:	Primary Antibodies
Clone Name:	OTI8A4
Applications:	IF, IHC, WB
Recommended Dilution:	WB 1:1000, IHC: 1:150
Reactivity:	Human, Dog, Rat, Monkey
Host:	Mouse
Isotype:	IgG2b
Clonality:	Monoclonal
Immunogen:	Full-length protein expressed in 293T cell transfected with human SILV expression vector
Formulation:	PBS (pH 7.3) containing 1% BSA, 50% glycerol and 0.02% sodium azide.
Concentration:	0.5 mg/ml
Purification:	Purified from mouse ascites fluids or tissue culture supernatant by affinity chromatography (protein A/G)
Conjugation:	Biotin
Storage:	Store at -20°C as received.
Stability:	Stable for 12 months from date of receipt.
Predicted Protein Size:	70.3 kDa
Gene Name:	premelanosome protein
Database Link:	NP_008859 Entrez Gene 362818 Rat Entrez Gene 481102 Dog Entrez Gene 710921 Monkey Entrez Gene 6490 Human P40967
Background:	Could be a melanogenic enzyme. Could represent an oncofetal self-antigen that is normally expressed at low levels in quiescent adult melanocytes but overexpressed by proliferating neonatal melanocytes and during tumor growth. Release of the soluble form, ME20-S, could protect tumor cells from antibody mediated immunity
Synonyms:	D12S53E; gp100; ME20; ME20-M; ME20M; P1; P100; PMEL17; SI; SIL; SILV



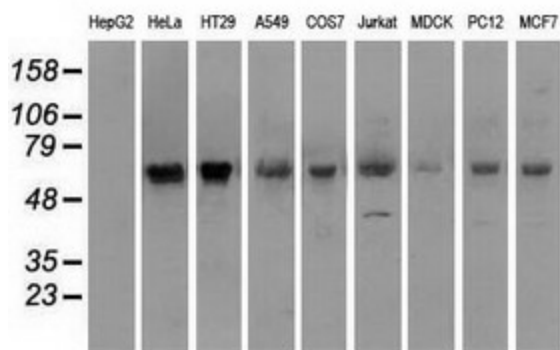
[View online »](#)

Protein Families: Secreted Protein, Transmembrane

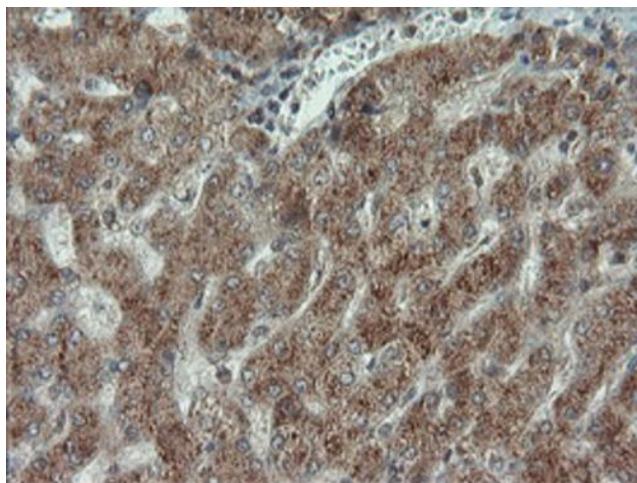
Product images:



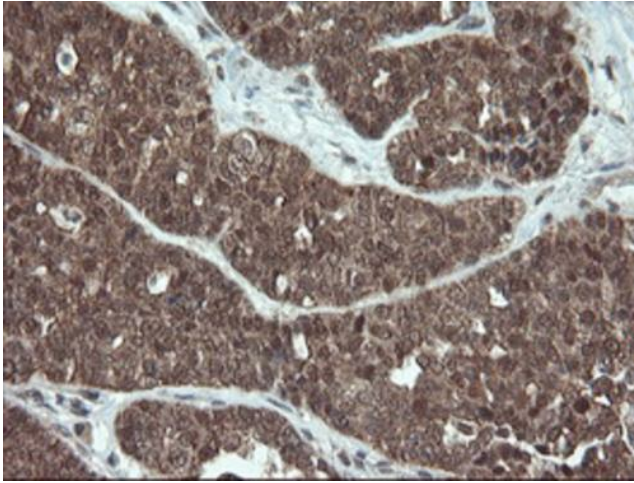
HEK293T cells were transfected with the pCMV6-ENTRY control (Left lane) or pCMV6-ENTRY SILV ([RC200663], Right lane) cDNA for 48 hrs and lysed. Equivalent amounts of cell lysates (5 ug per lane) were separated by SDS-PAGE and immunoblotted with anti-SILV. Positive lysates [LY402062] (100ug) and [LC402062] (20ug) can be purchased separately from OriGene.



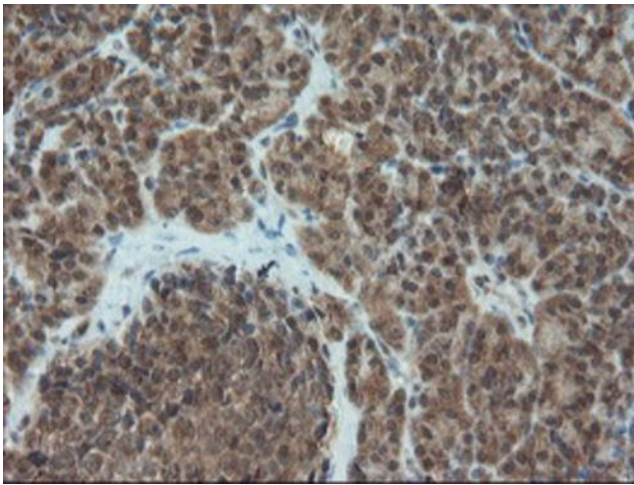
Western blot analysis of extracts (35ug) from 9 different cell lines by using anti-SILV monoclonal antibody.



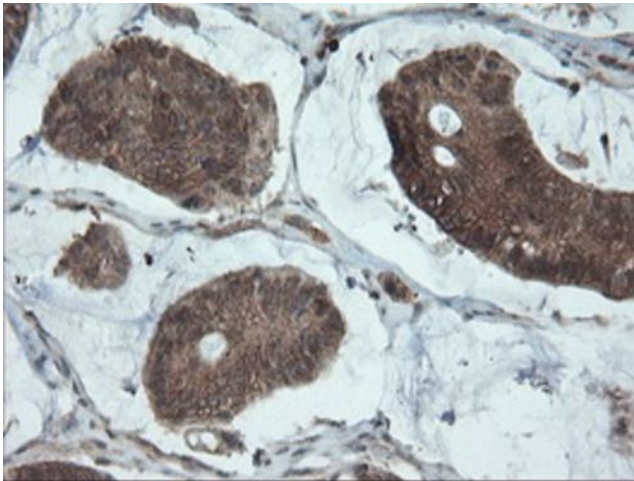
Immunohistochemical staining of paraffin-embedded Human liver tissue within the normal limits using anti-SILV mouse monoclonal antibody. ([TA500402]). Heat-induced epitope retrieval by EDTA solution buffer pH 8.0 at 120°C for 3 min.



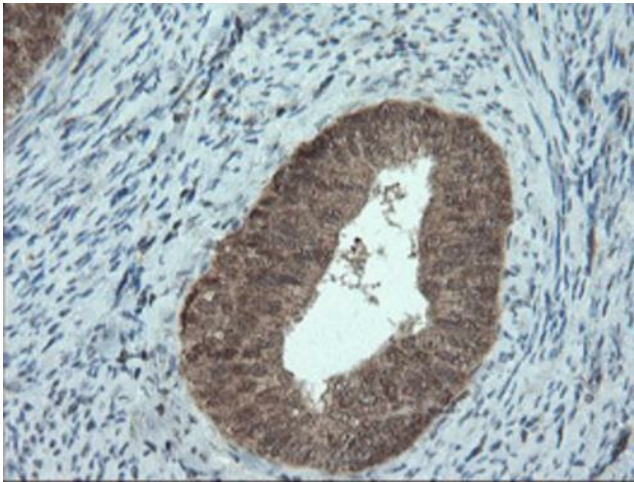
Immunohistochemical staining of paraffin-embedded Adenocarcinoma of Human ovary tissue using anti-SILV mouse monoclonal antibody. ([TA500402]). Heat-induced epitope retrieval by EDTA solution buffer pH 8.0 at 120°C for 3 min.



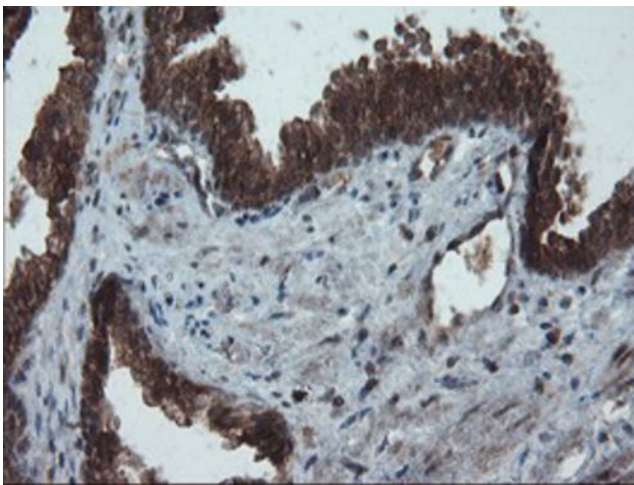
Immunohistochemical staining of paraffin-embedded Human pancreas tissue within the normal limits using anti-SILV mouse monoclonal antibody. ([TA500402]). Heat-induced epitope retrieval by EDTA solution buffer pH 8.0 at 120°C for 3 min.



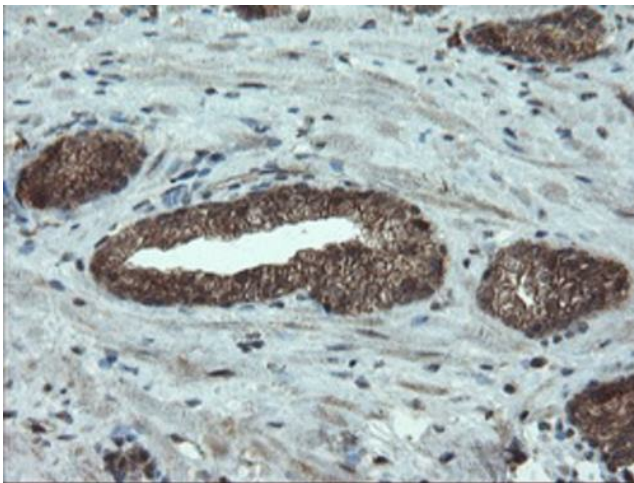
Immunohistochemical staining of paraffin-embedded Carcinoma of Human pancreas tissue using anti-SILV mouse monoclonal antibody. ([TA500402]). Heat-induced epitope retrieval by EDTA solution buffer pH 8.0 at 120°C for 3 min.



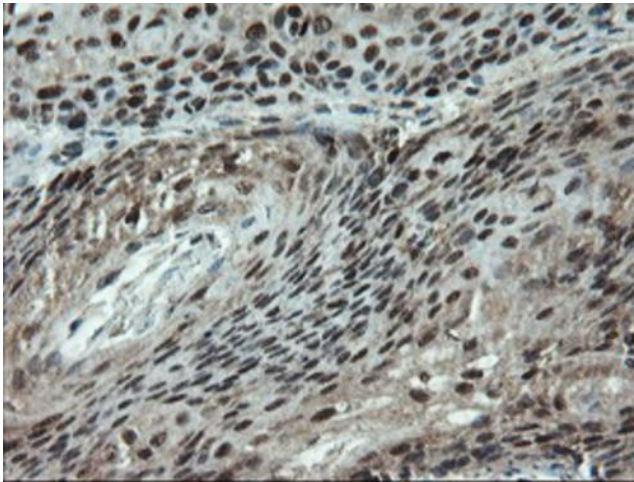
Immunohistochemical staining of paraffin-embedded Adenocarcinoma of Human endometrium tissue using anti-SILV mouse monoclonal antibody. ([TA500402]). Heat-induced epitope retrieval by EDTA solution buffer pH 8.0 at 120°C for 3 min.



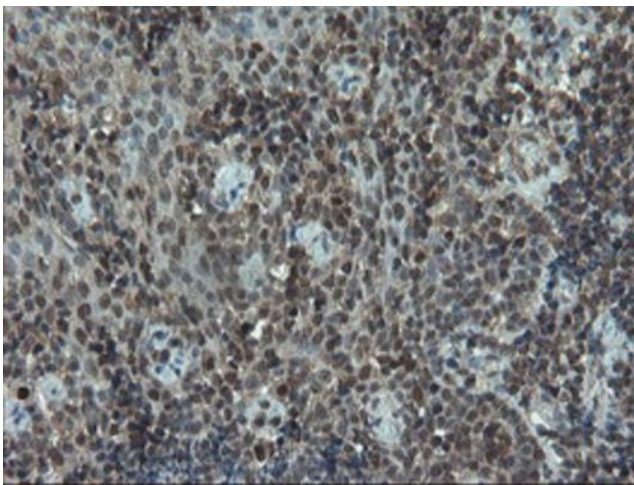
Immunohistochemical staining of paraffin-embedded Human prostate tissue within the normal limits using anti-SILV mouse monoclonal antibody. ([TA500402]). Heat-induced epitope retrieval by EDTA solution buffer pH 8.0 at 120°C for 3 min.



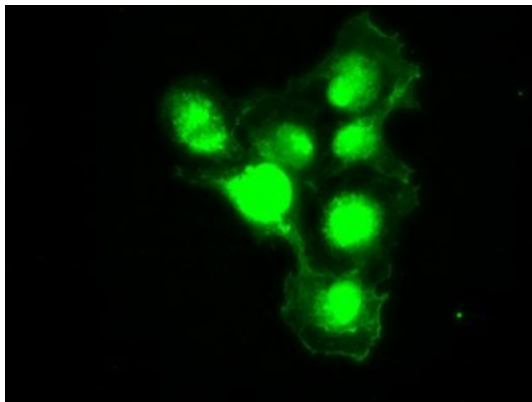
Immunohistochemical staining of paraffin-embedded Carcinoma of Human prostate tissue using anti-SILV mouse monoclonal antibody. ([TA500402]). Heat-induced epitope retrieval by EDTA solution buffer pH 8.0 at 120°C for 3 min.



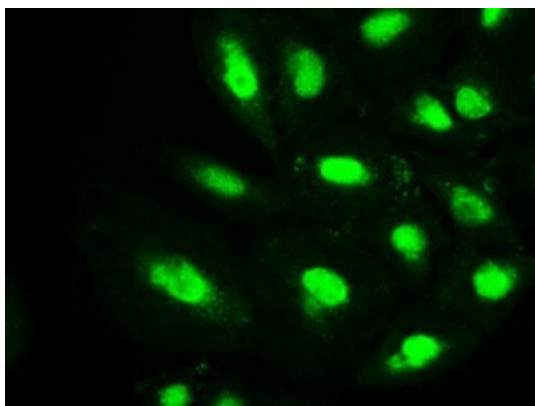
Immunohistochemical staining of paraffin-embedded Carcinoma of Human bladder tissue using anti-SILV mouse monoclonal antibody. ([TA500402]). Heat-induced epitope retrieval by EDTA solution buffer pH 8.0 at 120°C for 3 min.



Immunohistochemical staining of paraffin-embedded Human tonsil within the normal limits using anti-SILV mouse monoclonal antibody. ([TA500402]). Heat-induced epitope retrieval by EDTA solution buffer pH 8.0 at 120°C for 3 min.



Anti-SILV mouse monoclonal antibody ([TA500402]) immunofluorescent staining of COS7 cells transiently transfected by pCMV6-ENTRY SILV ([RC200663]).



Immunofluorescent staining of A549 cells using anti-SILV mouse monoclonal antibody ([TA500402]).