

Product datasheet for **TA500396BM**

PLK1 Mouse Monoclonal Antibody (HRP conjugated) [Clone ID: OTI5C1]

Product data:

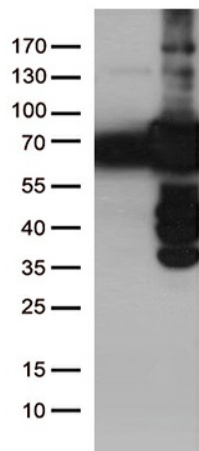
Product Type:	Primary Antibodies
Clone Name:	OTI5C1
Applications:	FC, IHC, IP, WB
Recommended Dilution:	WB 1:2000, IHC 1:150, FLOW 1:100, IP 2ug/500ul
Reactivity:	Human, Mouse, Rat
Host:	Mouse
Isotype:	IgG2b
Clonality:	Monoclonal
Immunogen:	Full-length protein expressed in 293T cell transfected with human PLK1 expression vector
Formulation:	PBS (pH 7.3) containing 1% BSA, 50% glycerol.
Concentration:	0.5 mg/ml
Purification:	Purified from mouse ascites fluids or tissue culture supernatant by affinity chromatography (protein A/G)
Conjugation:	HRP
Storage:	Store at -20°C as received.
Stability:	Stable for 12 months from date of receipt.
Predicted Protein Size:	68.1 kDa
Gene Name:	polo like kinase 1
Database Link:	NP_005021 Entrez Gene 18817 Mouse Entrez Gene 25515 Rat Entrez Gene 5347 Human P53350
Background:	Serine/threonine-protein kinase that performs several important functions throughout M phase of the cell cycle, including the regulation of centrosome maturation and spindle assembly, the removal of cohesins from chromosome arms, the inactivation of APC/C inhibitors, and the regulation of mitotic exit and cytokinesis
Synonyms:	PLK; STPK13
Protein Families:	Druggable Genome, Protein Kinase



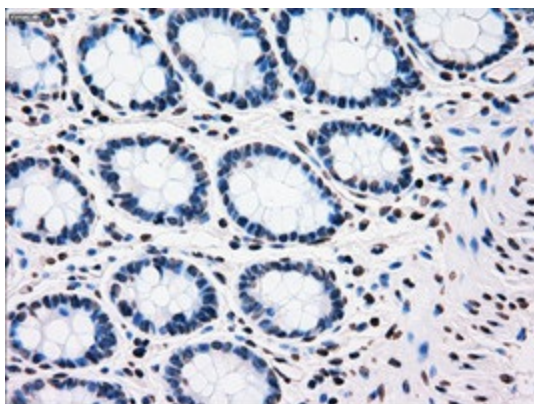
[View online »](#)

Protein Pathways: Cell cycle, Oocyte meiosis, Progesterone-mediated oocyte maturation

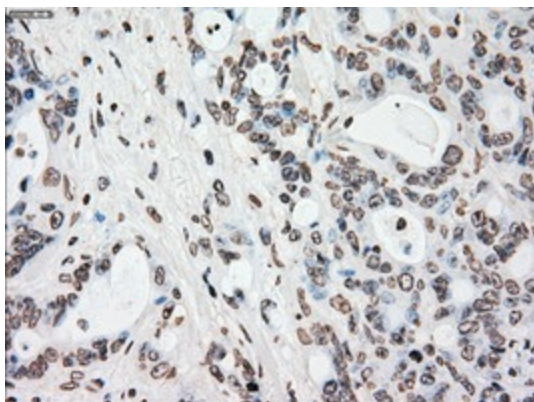
Product images:



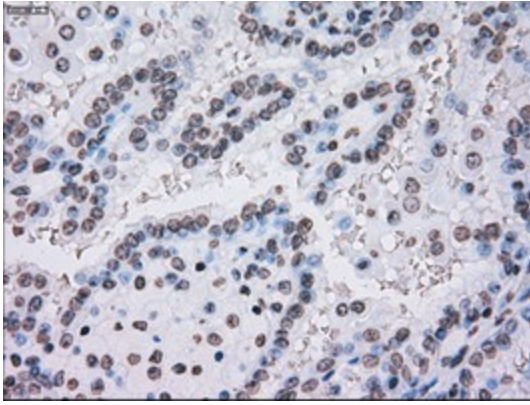
HEK293T cells were transfected with the pCMV6-ENTRY control (Left lane) or pCMV6-ENTRY PLK1 [RC201795], Right lane) cDNA for 48 hrs and lysed. Equivalent amounts of cell lysates (5 ug per lane) were separated by SDS-PAGE and immunoblotted with anti-PLK1. (1: Positive lysates [LY417592] (100ug) and [LC417592] (20ug) can be purchased separately from OriGene.



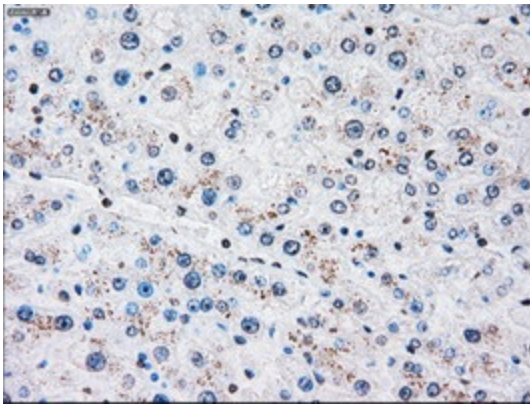
Immunohistochemical staining of paraffin-embedded Human colon tissue within the normal limits using anti-PLK1 mouse monoclonal antibody. (Heat-induced epitope retrieval by 10mM citric buffer, pH6.0, 100°C for 10min, [TA500396])



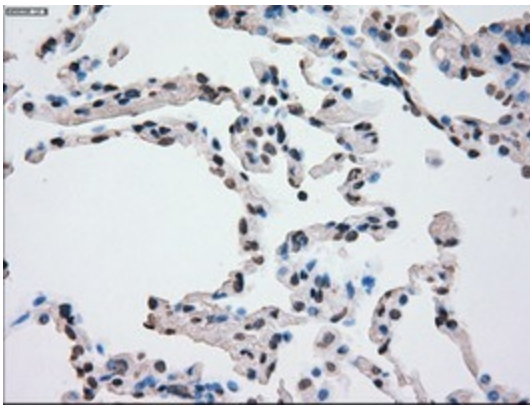
Immunohistochemical staining of paraffin-embedded Adenocarcinoma of Human colon tissue using anti-PLK1 mouse monoclonal antibody. (Heat-induced epitope retrieval by 10mM citric buffer, pH6.0, 100°C for 10min, [TA500396])



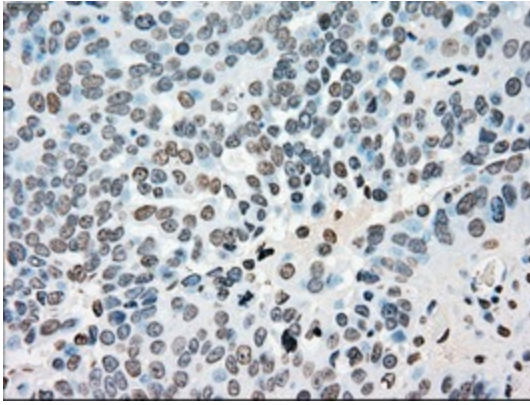
Immunohistochemical staining of paraffin-embedded Carcinoma of Human kidney tissue using anti-PLK1 mouse monoclonal antibody. (Heat-induced epitope retrieval by 10mM citric buffer, pH6.0, 100°C for 10min, [TA500396])



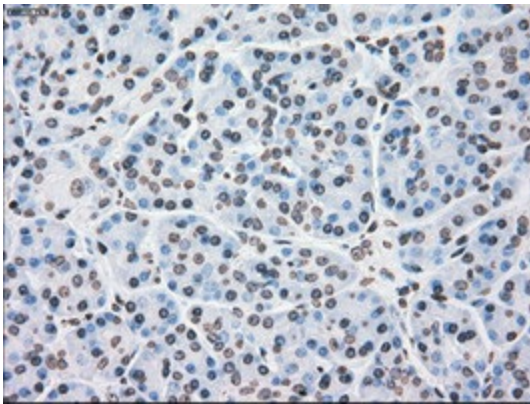
Immunohistochemical staining of paraffin-embedded Human liver tissue within the normal limits using anti-PLK1 mouse monoclonal antibody. (Heat-induced epitope retrieval by 10mM citric buffer, pH6.0, 100°C for 10min, [TA500396])



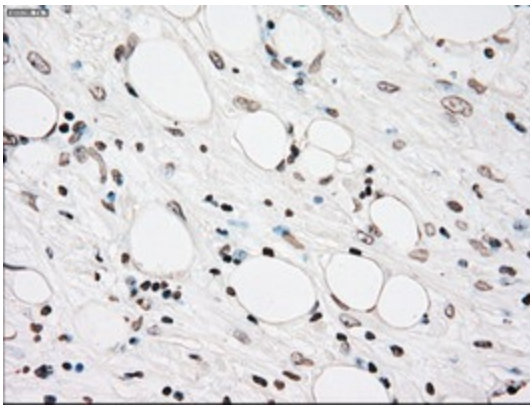
Immunohistochemical staining of paraffin-embedded Human lung tissue within the normal limits using anti-PLK1 mouse monoclonal antibody. (Heat-induced epitope retrieval by 10mM citric buffer, pH6.0, 100°C for 10min, [TA500396])



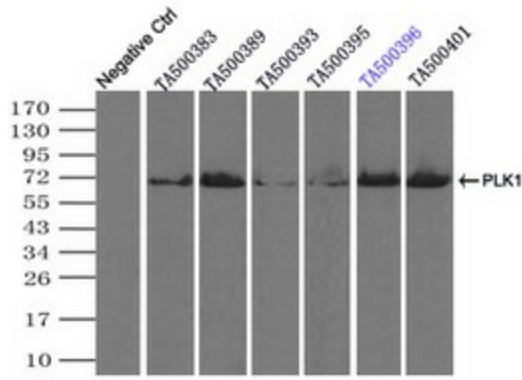
Immunohistochemical staining of paraffin-embedded Adenocarcinoma of Human ovary tissue using anti-PLK1 mouse monoclonal antibody. (Heat-induced epitope retrieval by 10mM citric buffer, pH6.0, 100°C for 10min, [TA500396])



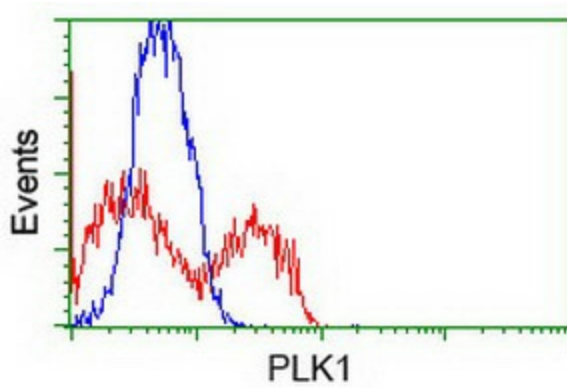
Immunohistochemical staining of paraffin-embedded Human pancreas tissue within the normal limits using anti-PLK1 mouse monoclonal antibody. (Heat-induced epitope retrieval by 10mM citric buffer, pH6.0, 100°C for 10min, [TA500396])



Immunohistochemical staining of paraffin-embedded Carcinoma of Human pancreas tissue using anti-PLK1 mouse monoclonal antibody. (Heat-induced epitope retrieval by 10mM citric buffer, pH6.0, 100°C for 10min, [TA500396])



Immunoprecipitation (IP) of PLK1 by using TrueMab monoclonal anti-PLK1 antibodies (Negative control: IP without adding anti-PLK1 antibody.). For each experiment, 500ul of DDK tagged PLK1 overexpression lysates (at 1:5 dilution with HEK293T lysate), 2ug of anti-PLK1 antibody and 20ul (0.1mg) of goat anti-mouse conjugated magnetic beads were mixed and incubated overnight. After extensive wash to remove any non-specific binding, the immunoprecipitated products were analyzed with rabbit anti-DDK polyclonal antibody.



HEK293T cells transfected with either [RC201795] overexpress plasmid (Red) or empty vector control plasmid (Blue) were immunostained by anti-PLK1 antibody ([TA500396]), and then analyzed by flow cytometry.