

Product datasheet for **TA500392S**

OXSRI Mouse Monoclonal Antibody [Clone ID: OTI1F3]

Product data:

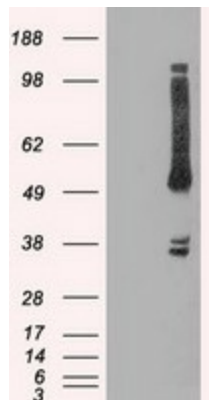
Product Type:	Primary Antibodies
Clone Name:	OTI1F3
Applications:	IHC, WB
Recommended Dilution:	WB 1:1000, IHC 1:150
Reactivity:	Human, Dog, Rat, Monkey, Mouse
Host:	Mouse
Isotype:	IgG1
Clonality:	Monoclonal
Immunogen:	Full-length protein expressed in 293T cell transfected with human OXSRI expression vector
Formulation:	PBS (pH 7.3) containing 1% BSA, 50% glycerol and 0.02% sodium azide.
Concentration:	1.28 mg/ml
Purification:	Purified from mouse ascites fluids or tissue culture supernatant by affinity chromatography (protein A/G)
Conjugation:	Unconjugated
Storage:	Store at -20°C as received.
Stability:	Stable for 12 months from date of receipt.
Predicted Protein Size:	57.8 kDa
Gene Name:	oxidative stress responsive kinase 1
Database Link:	NP_005100 Entrez Gene 108737 Mouse Entrez Gene 316064 Rat Entrez Gene 607809 Dog Entrez Gene 696362 Monkey Entrez Gene 9943 Human O95747
Background:	The product of this gene belongs to the Ser/Thr protein kinase family of proteins. It regulates downstream kinases in response to environmental stress, and may play a role in regulating the actin cytoskeleton. Regulates downstream kinases in response to environmental stress. May also have a function in regulating the actin cytoskeleton
Synonyms:	OSR1



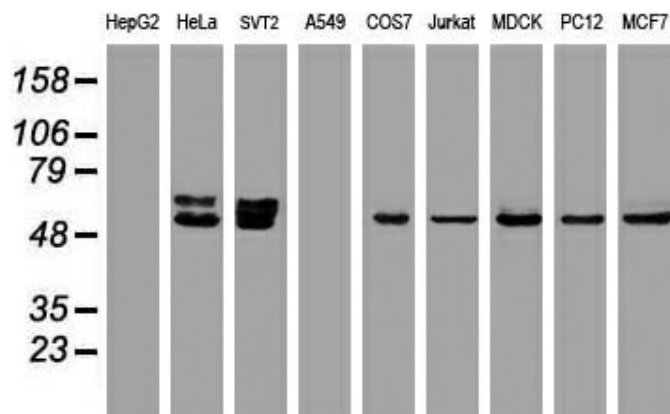
[View online »](#)

Protein Families: Druggable Genome, Protein Kinase

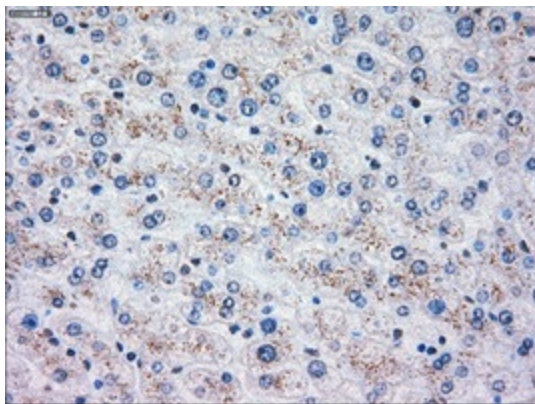
Product images:



HEK293T cells were transfected with the pCMV6-ENTRY control (Cat# [PS100001], Left lane) or pCMV6-ENTRY OXR1 (Cat# [RC200396], Right lane) cDNA for 48 hrs and lysed. Equivalent amounts of cell lysates (5 ug per lane) were separated by SDS-PAGE and immunoblotted with anti-OXR1(Cat# [TA500392]). Positive lysates [LY401573] (100ug) and [LC401573] (20ug) can be purchased separately from OriGene.



Western blot analysis of extracts (35ug) from 9 different cell lines by using anti-OXR1 monoclonal antibody.



Immunohistochemical staining of paraffin-embedded Human liver tissue within the normal limits using anti-OXR1 mouse monoclonal antibody. (Heat-induced epitope retrieval by 10mM citric buffer, pH6.0, 100°C for 10min, [TA500392])