

Product datasheet for **TA500392**

OXSR1 Mouse Monoclonal Antibody [Clone ID: OTI1F3]

Product data:

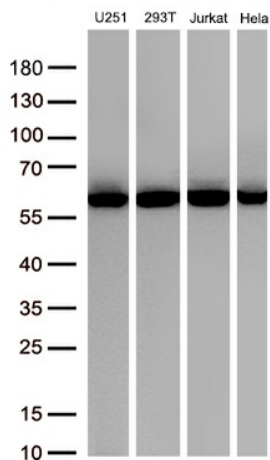
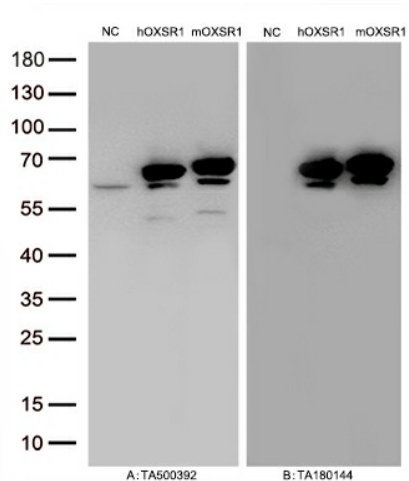
Product Type:	Primary Antibodies
Clone Name:	OTI1F3
Applications:	IHC, WB
Recommended Dilution:	WB 1:1000, IHC 1:150
Reactivity:	Human, Dog, Rat, Monkey, Mouse
Host:	Mouse
Isotype:	IgG1
Clonality:	Monoclonal
Immunogen:	Full-length protein expressed in 293T cell transfected with human OXSR1 expression vector
Formulation:	PBS (pH 7.3) containing 1% BSA, 50% glycerol and 0.02% sodium azide.
Concentration:	1.28 mg/ml
Purification:	Purified from mouse ascites fluids or tissue culture supernatant by affinity chromatography (protein A/G)
Conjugation:	Unconjugated
Storage:	Store at -20°C as received.
Stability:	Stable for 12 months from date of receipt.
Predicted Protein Size:	57.8 kDa
Gene Name:	oxidative stress responsive kinase 1
Database Link:	NP_005100 Entrez Gene 108737 Mouse Entrez Gene 316064 Rat Entrez Gene 607809 Dog Entrez Gene 696362 Monkey Entrez Gene 9943 Human O95747
Background:	The product of this gene belongs to the Ser/Thr protein kinase family of proteins. It regulates downstream kinases in response to environmental stress, and may play a role in regulating the actin cytoskeleton. Regulates downstream kinases in response to environmental stress. May also have a function in regulating the actin cytoskeleton
Synonyms:	OSR1

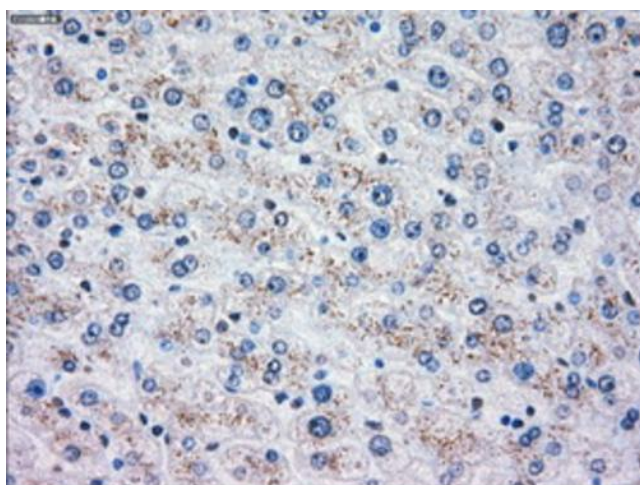


[View online »](#)

Protein Families: Druggable Genome, Protein Kinase

Product images:





Immunohistochemical staining of paraffin-embedded Human liver tissue within the normal limits using anti-OXSR1 mouse monoclonal antibody. Heat-induced epitope retrieval by EDTA solution buffer pH 8.0 at 120°C for 3 min.