

Product datasheet for **TA500381**

TRPM4 Mouse Monoclonal Antibody [Clone ID: OTI10H5]

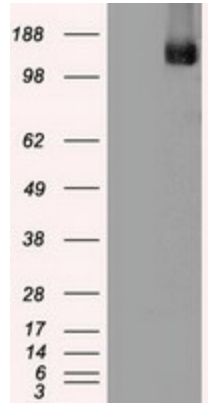
Product data:

Product Type:	Primary Antibodies
Clone Name:	OTI10H5
Applications:	IHC, WB
Reactivity:	Human, Monkey, Dog
Host:	Mouse
Isotype:	IgG1
Clonality:	Monoclonal
Immunogen:	Full length human recombinant protein of human TRPM4 (NP_060106) produced in HEK293T cell.
Formulation:	PBS (pH 7.3) containing 1% BSA, 50% glycerol and 0.02% sodium azide.
Concentration:	1 mg/ml
Purification:	Purified from cell culture supernatant by affinity chromatography
Predicted Protein Size:	134.3 kDa
Gene Name:	transient receptor potential cation channel subfamily M member 4
Database Link:	NP_060106 Entrez Gene 484385 Dog Entrez Gene 719120 Monkey Entrez Gene 54795 Human
Background:	Calcium-activated non selective (CAN) cation channel that mediates membrane depolarization. While it is activated by increase in intracellular Ca(2+), it is impermeable to it. Mediates transport of monovalent cations (Na(+) > K(+) > Cs(+) > Li(+)), leading to depolarize the membrane. It thereby plays a central role in cardiomyocytes, neurons from entorhinal cortex, dorsal root and vomeronasal neurons, endocrine pancreas cells, kidney epithelial cells, cochlea hair cells etc. Participates in T-cell activation by modulating Ca(2+) oscillations after T lymphocyte activation, which is required for NFAT-dependent IL2 production. Involved in myogenic constriction of cerebral arteries. Controls insulin secretion in pancreatic beta-cells. May also be involved in pacemaking or could cause irregular electrical activity under conditions of Ca(2+) overload.
Synonyms:	hTRPM4; LTrpC4; PFHB1B; TRPM4B
Protein Families:	Druggable Genome, Ion Channels: Transient receptor potential, Transmembrane

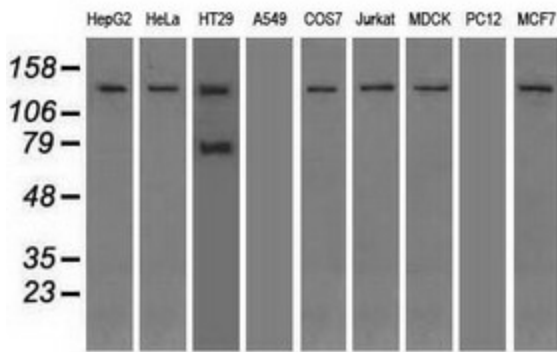


[View online »](#)

Product images:



HEK293T cells were transfected with the pCMV6-ENTRY control (Left lane) or pCMV6-ENTRY TRPM4 (RC216888, Right lane) cDNA for 48 hrs and lysed. Equivalent amounts of cell lysates (5 ug per lane) were separated by SDS-PAGE and immunoblotted with anti-TRPM4. Positive lysates LY413636 (100ug) and LC413636 (20ug) can be purchased separately from OriGene.



Western blot analysis of extracts (35ug) from 9 different cell lines by using anti-TRPM4 monoclonal antibody.

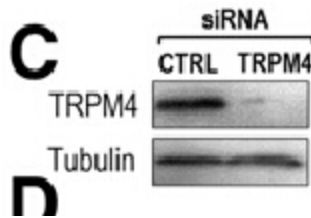
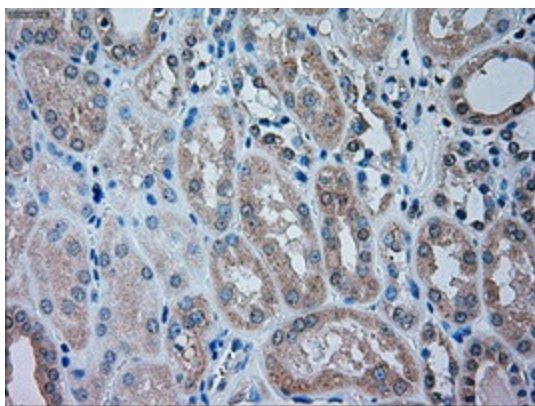
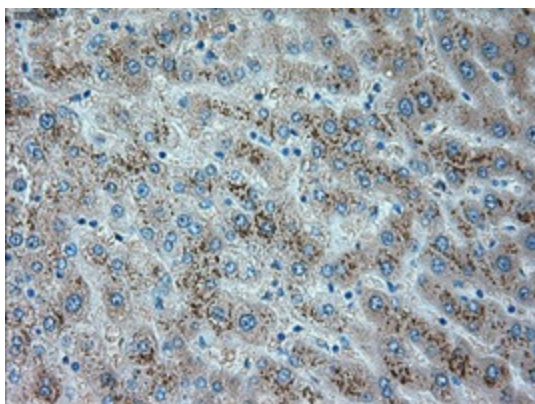


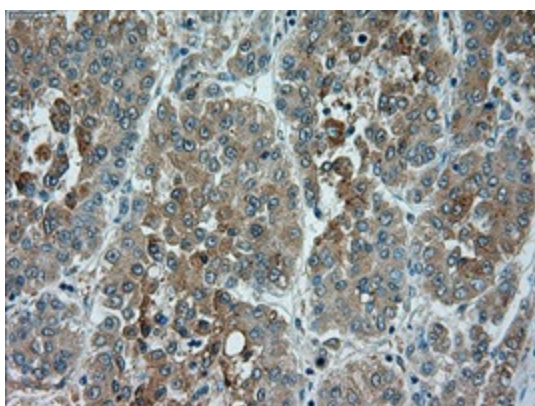
Figure from citation: Western Blot of TRPM4 protein level by using anti-TRPM4 antibody in human endothelial cells. [View Citation](#)



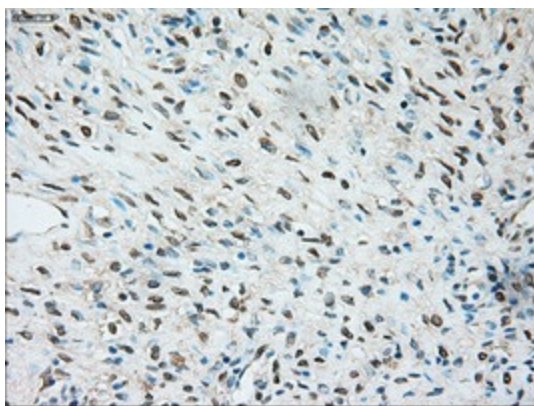
Immunohistochemical staining of paraffin-embedded Human Kidney tissue within the normal limits using anti-TRPM4 mouse monoclonal antibody. (Heat-induced epitope retrieval by 10mM citric buffer, pH6.0, 100°C for 10min, TA500381)



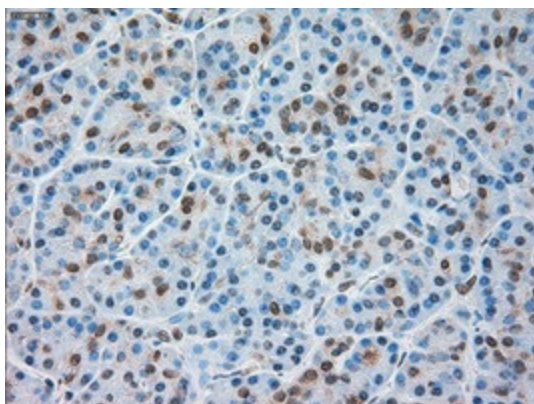
Immunohistochemical staining of paraffin-embedded Human liver tissue within the normal limits using anti-TRPM4 mouse monoclonal antibody. (Heat-induced epitope retrieval by 10mM citric buffer, pH6.0, 100°C for 10min, TA500381)



Immunohistochemical staining of paraffin-embedded Carcinoma of Human liver tissue using anti-TRPM4 mouse monoclonal antibody. (Heat-induced epitope retrieval by 10mM citric buffer, pH6.0, 100°C for 10min, TA500381)



Immunohistochemical staining of paraffin-embedded Human Ovary tissue within the normal limits using anti-TRPM4 mouse monoclonal antibody. (Heat-induced epitope retrieval by 10mM citric buffer, pH6.0, 100°C for 10min, TA500381)



Immunohistochemical staining of paraffin-embedded Human pancreas tissue within the normal limits using anti-TRPM4 mouse monoclonal antibody. (Heat-induced epitope retrieval by 10mM citric buffer, pH6.0, 100°C for 10min, TA500381)