

## Product datasheet for **TA500380AM**

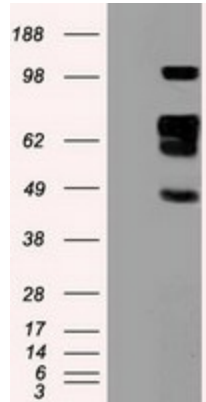
### **SIGLEC9 Mouse Monoclonal Antibody (Biotin conjugated) [Clone ID: OTI8F7]**

#### **Product data:**

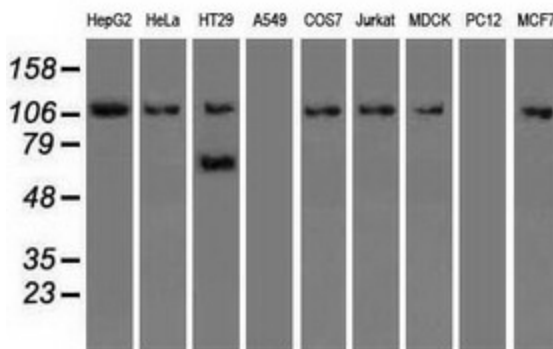
<b>Product Type:</b>	Primary Antibodies
<b>Clone Name:</b>	OTI8F7
<b>Applications:</b>	IHC, WB
<b>Recommended Dilution:</b>	WB 1:2500~5000, IHC 1:50
<b>Reactivity:</b>	Human, Dog, Monkey
<b>Host:</b>	Mouse
<b>Isotype:</b>	IgG1
<b>Clonality:</b>	Monoclonal
<b>Immunogen:</b>	Full length human recombinant protein of human SIGLEC9 (NP_055256) produced in HEK293T cell.
<b>Formulation:</b>	PBS (pH 7.3) containing 1% BSA, 50% glycerol and 0.02% sodium azide.
<b>Concentration:</b>	0.5 mg/ml
<b>Purification:</b>	Purified from mouse ascites fluids or tissue culture supernatant by affinity chromatography (protein A/G)
<b>Conjugation:</b>	Biotin
<b>Storage:</b>	Store at -20°C as received.
<b>Stability:</b>	Stable for 12 months from date of receipt.
<b>Predicted Protein Size:</b>	50.1 kDa
<b>Gene Name:</b>	sialic acid binding Ig like lectin 9
<b>Database Link:</b>	<a href="#">NP_055256</a> <a href="#">Entrez Gene 719831 Monkey</a> <a href="#">Entrez Gene 27180 Human</a> <a href="#">Q9Y336</a>
<b>Background:</b>	Putative adhesion molecule that mediates sialic-acid dependent binding to cells. Preferentially binds to alpha-2,3- or alpha-2,6-linked sialic acid. The sialic acid recognition site may be masked by cis interactions with sialic acids on the same cell surface.
<b>Synonyms:</b>	CD329; CDw329; FOAP-9; OBBP-LIKE; siglec-9
<b>Protein Families:</b>	Druggable Genome, Transmembrane



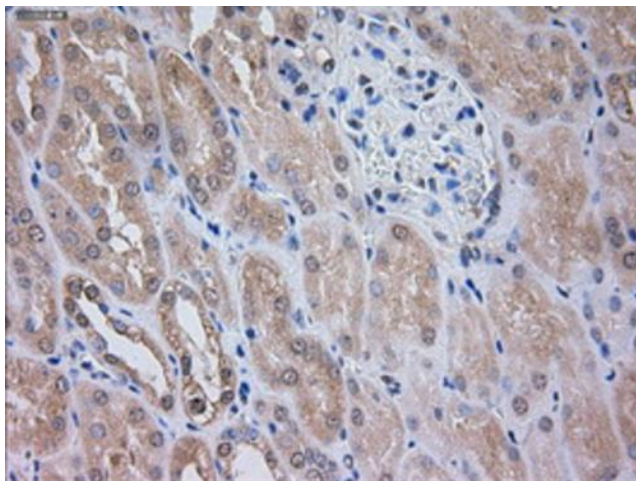
[View online »](#)

**Product images:**


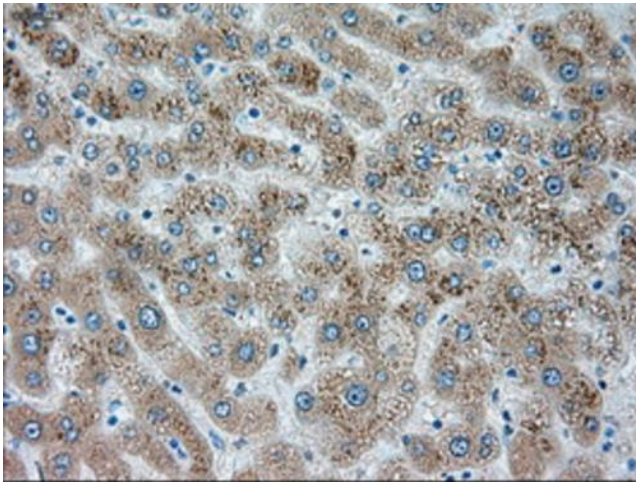
HEK293T cells were transfected with the pCMV6-ENTRY control (Cat# [PS100001], Left lane) or pCMV6-ENTRY SIGLEC9 (Cat# [RC206674], Right lane) cDNA for 48 hrs and lysed. Equivalent amounts of cell lysates (5 ug per lane) were separated by SDS-PAGE and immunoblotted with anti-SIGLEC9 (Cat# [TA500380]). Positive lysates [LY402335] (100ug) and [LC402335] (20ug) can be purchased separately from OriGene.



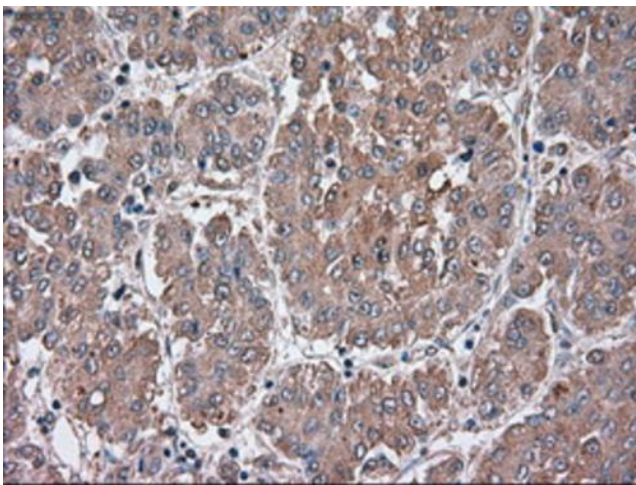
Western blot analysis of extracts (35ug) from 9 different cell lines by using anti-SIGLEC9 monoclonal antibody.



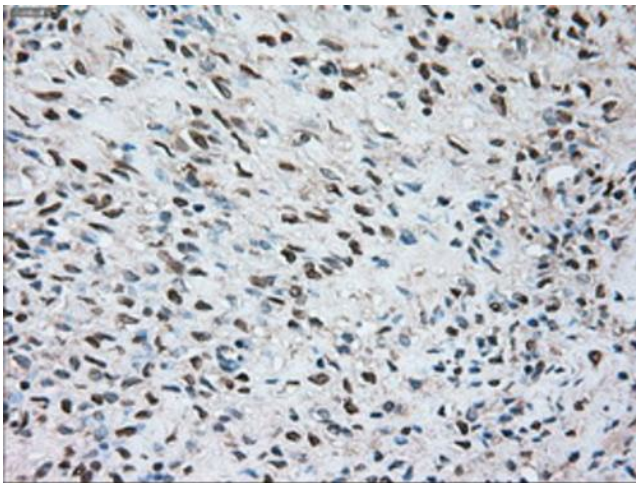
Immunohistochemical staining of paraffin-embedded Human Kidney tissue within the normal limits using anti-SIGLEC9 mouse monoclonal antibody. (Heat-induced epitope retrieval by 10mM citric buffer, pH6.0, 100°C for 10min, [TA500380])



Immunohistochemical staining of paraffin-embedded Human liver tissue within the normal limits using anti-SIGLEC9 mouse monoclonal antibody. (Heat-induced epitope retrieval by 10mM citric buffer, pH6.0, 100°C for 10min, [TA500380])

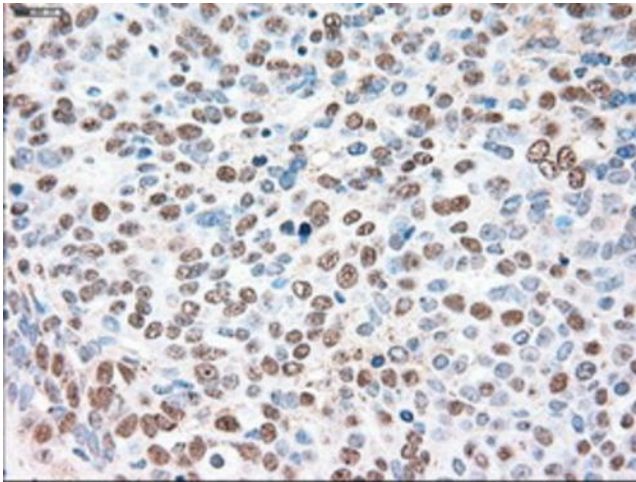


Immunohistochemical staining of paraffin-embedded Carcinoma of Human liver tissue using anti-SIGLEC9 mouse monoclonal antibody. (Heat-induced epitope retrieval by 10mM citric buffer, pH6.0, 100°C for 10min, [TA500380])

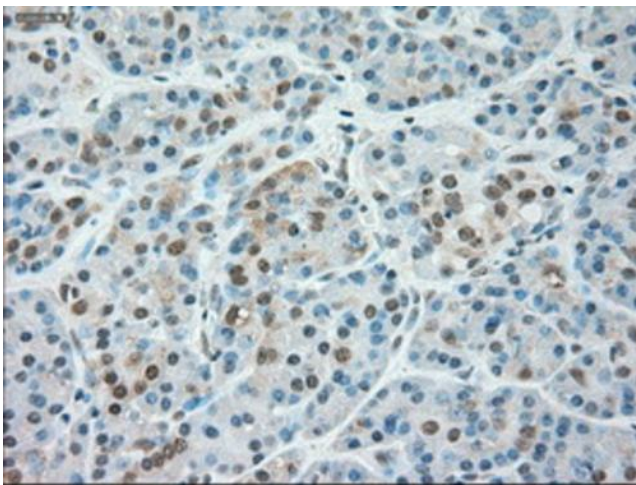


Immunohistochemical staining of paraffin-embedded Human Ovary tissue within the normal limits using anti-SIGLEC9 mouse monoclonal antibody. (Heat-induced epitope retrieval by 10mM citric buffer, pH6.0, 100°C for 10min, [TA500380])

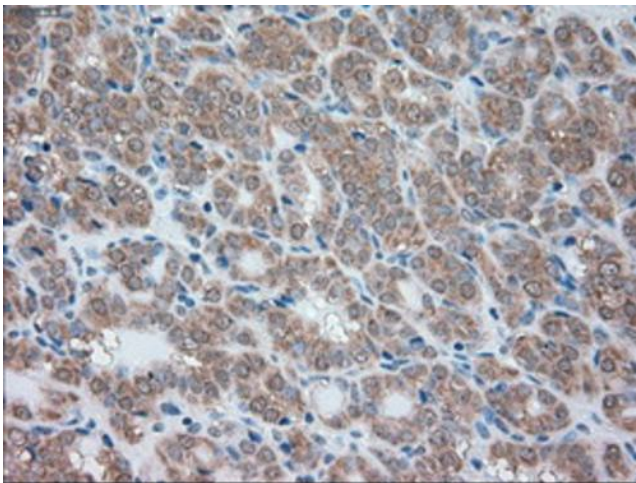




Immunohistochemical staining of paraffin-embedded Adenocarcinoma of Human ovary tissue using anti-SIGLEC9 mouse monoclonal antibody. (Heat-induced epitope retrieval by 10mM citric buffer, pH6.0, 100°C for 10min, [TA500380])



Immunohistochemical staining of paraffin-embedded Human pancreas tissue within the normal limits using anti-SIGLEC9 mouse monoclonal antibody. (Heat-induced epitope retrieval by 10mM citric buffer, pH6.0, 100°C for 10min, [TA500380])



Immunohistochemical staining of paraffin-embedded Carcinoma of Human thyroid tissue using anti-SIGLEC9 mouse monoclonal antibody. (Heat-induced epitope retrieval by 10mM citric buffer, pH6.0, 100°C for 10min, [TA500380])