

Product datasheet for **TA500380**

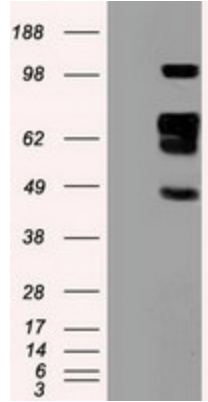
SIGLEC9 Mouse Monoclonal Antibody [Clone ID: OTI8F7]

Product data:

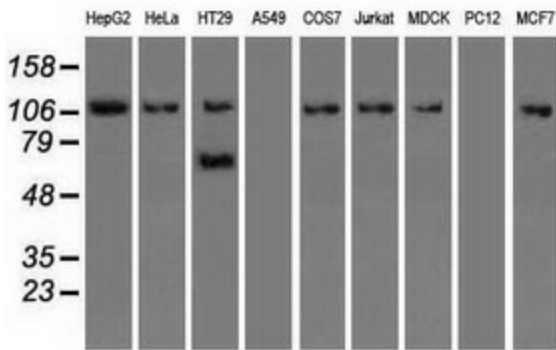
Product Type:	Primary Antibodies
Clone Name:	OTI8F7
Applications:	WB
Recommended Dilution:	WB 1:2500~5000
Reactivity:	Human, Dog, Monkey
Host:	Mouse
Isotype:	IgG1
Clonality:	Monoclonal
Immunogen:	Full length human recombinant protein of human SIGLEC9 (NP_055256) produced in HEK293T cell.
Formulation:	PBS (pH 7.3) containing 1% BSA, 50% glycerol and 0.02% sodium azide.
Concentration:	0.5 mg/ml
Purification:	Purified from mouse ascites fluids or tissue culture supernatant by affinity chromatography (protein A/G)
Conjugation:	Unconjugated
Storage:	Store at -20°C as received.
Stability:	Stable for 12 months from date of receipt.
Predicted Protein Size:	50.1 kDa
Gene Name:	sialic acid binding Ig like lectin 9
Database Link:	NP_055256 Entrez Gene 719831 Monkey Entrez Gene 27180 Human Q9Y336
Background:	Putative adhesion molecule that mediates sialic-acid dependent binding to cells. Preferentially binds to alpha-2,3- or alpha-2,6-linked sialic acid. The sialic acid recognition site may be masked by cis interactions with sialic acids on the same cell surface.
Synonyms:	CD329; CDw329; FOAP-9; OBBP-LIKE; siglec-9
Protein Families:	Druggable Genome, Transmembrane



[View online »](#)

Product images:


HEK293T cells were transfected with the pCMV6-ENTRY control (Cat# [PS100001], Left lane) or pCMV6-ENTRY SIGLEC9 (Cat# [RC206674], Right lane) cDNA for 48 hrs and lysed. Equivalent amounts of cell lysates (5 ug per lane) were separated by SDS-PAGE and immunoblotted with anti-SIGLEC9(Cat# TA500380). Positive lysates [LY402335] (100ug) and [LC402335] (20ug) can be purchased separately from OriGene.



Western blot analysis of extracts (35ug) from 9 different cell lines by using anti-SIGLEC9 monoclonal antibody.