

Product datasheet for **TA500378AM**

alpha 1 Antitrypsin (SERPINA1) Mouse Monoclonal Antibody (Biotin conjugated) [Clone ID: OTI11G2]

Product data:

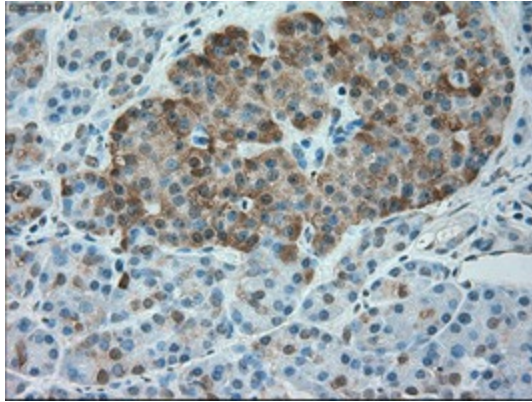
Product Type:	Primary Antibodies
Clone Name:	OTI11G2
Applications:	IHC, IP, WB
Recommended Dilution:	WB 1:1000~2000, IHC 1:150, IP 2ug/500ul
Reactivity:	Human, Dog, Monkey
Host:	Mouse
Isotype:	IgG1
Clonality:	Monoclonal
Immunogen:	Full-length protein expressed in 293T cell transfected with human SERPINA1 expression vector
Formulation:	PBS (pH 7.3) containing 1% BSA, 50% glycerol and 0.02% sodium azide.
Concentration:	0.5 mg/ml
Purification:	Purified from mouse ascites fluids or tissue culture supernatant by affinity chromatography (protein A/G)
Conjugation:	Biotin
Storage:	Store at -20°C as received.
Stability:	Stable for 12 months from date of receipt.
Predicted Protein Size:	46.7 kDa
Gene Name:	serpin family A member 1
Database Link:	NP_000286 Entrez Gene 480422 Dog Entrez Gene 701361 Monkey Entrez Gene 5265 Human P01009
Background:	The protein encoded by this gene is secreted and is a serine protease inhibitor whose targets include elastase, plasmin, thrombin, trypsin, chymotrypsin, and plasminogen activator. Defects in this gene can cause emphysema or liver disease. Several transcript variants encoding the same protein have been found for this gene.



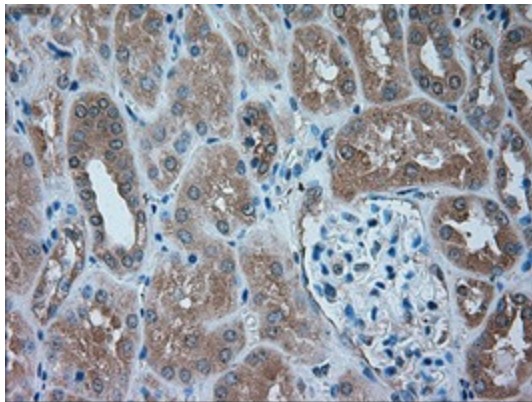
[View online »](#)

Synonyms: A1A; A1AT; AAT; alpha1AT; PI; PI1; PRO2275
Protein Families: Druggable Genome, ES Cell Differentiation/IPS, Secreted Protein
Protein Pathways: Complement and coagulation cascades

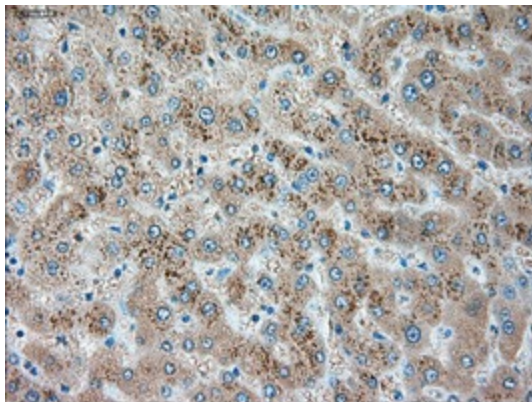
Product images:



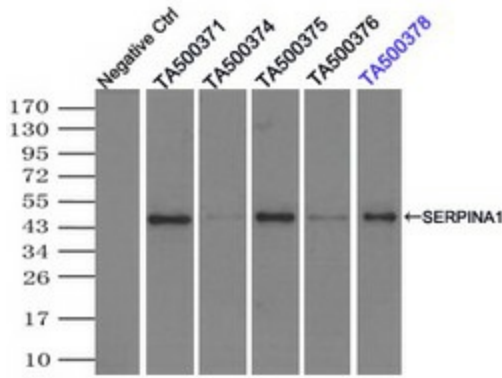
Immunohistochemical staining of paraffin-embedded Human pancreas tissue within the normal limits using anti-SERPINA1 mouse monoclonal antibody. (Heat-induced epitope retrieval by 10mM citric buffer, pH6.0, 100°C for 10min, [TA500378])



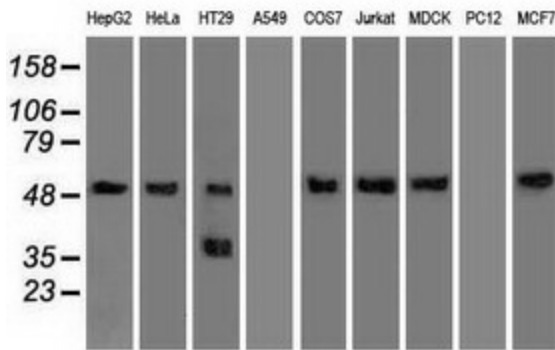
Immunohistochemical staining of paraffin-embedded Human Kidney tissue within the normal limits using anti-SERPINA1 mouse monoclonal antibody. (Heat-induced epitope retrieval by 10mM citric buffer, pH6.0, 100°C for 10min, [TA500378])



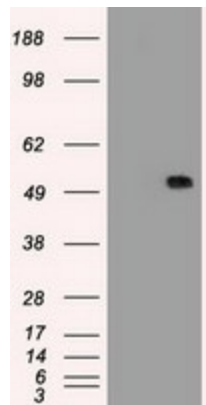
Immunohistochemical staining of paraffin-embedded Human liver tissue within the normal limits using anti-SERPINA1 mouse monoclonal antibody. (Heat-induced epitope retrieval by 10mM citric buffer, pH6.0, 100°C for 10min, [TA500378])



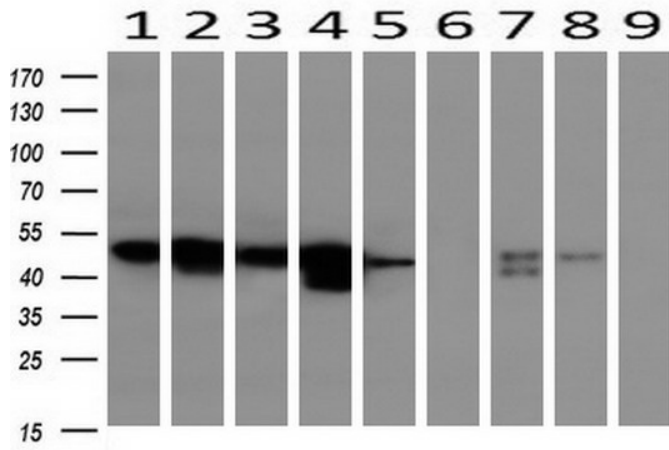
Immunoprecipitation (IP) of SERPINA1 by using TrueMab monoclonal anti-SERPINA1 antibodies (Negative control: IP without adding anti-SERPINA1 antibody.). For each experiment, 500ul of DDK tagged SERPINA1 overexpression lysates (at 1:5 dilution with HEK293T lysate), 2ug of anti-SERPINA1 antibody and 20ul (0.1mg) of goat anti-mouse conjugated magnetic beads were mixed and incubated overnight. After extensive wash to remove any non-specific binding, the immunoprecipitated products were analyzed with rabbit anti-DDK polyclonal antibody.



Western blot analysis of extracts (35ug) from 9 different cell lines by using anti-SERPINA1 monoclonal antibody.



HEK293T cells were transfected with the pCMV6-ENTRY control (Left lane) or pCMV6-ENTRY SERPINA1 ([RC202082], Right lane) cDNA for 48 hrs and lysed. Equivalent amounts of cell lysates (5 ug per lane) were separated by SDS-PAGE and immunoblotted with anti-SERPINA1. Positive lysates [LY400112] (100ug) and [LC400112] (20ug) can be purchased separately from OriGene.



Western blot analysis of extracts (10ug) from 9 Human tissue by using anti-SERPINA1 monoclonal antibody at 1:200 (1: Testis; 2: Omentum; 3: Uterus; 4: Breast; 5: Brain; 6: Liver; 7: Ovary; 8: Thyroid gland; 9: Colon).