

Product datasheet for **TA500377**

TRPM4 Mouse Monoclonal Antibody [Clone ID: OTI14F1]

Product data:

Product Type:	Primary Antibodies
Clone Name:	OTI14F1
Applications:	IHC, WB
Recommended Dilution:	WB 1:1000, IHC 1:50
Reactivity:	Human
Host:	Mouse
Isotype:	IgG1
Clonality:	Monoclonal
Immunogen:	Full-length protein expressed in 293T cell transfected with human TRPM4 expression vector
Formulation:	PBS (pH 7.3) containing 1% BSA, 50% glycerol and 0.02% sodium azide.
Concentration:	0.8 mg/ml
Purification:	Purified from mouse ascites fluids or tissue culture supernatant by affinity chromatography (protein A/G)
Conjugation:	Unconjugated
Storage:	Store at -20°C as received.
Stability:	Stable for 12 months from date of receipt.
Predicted Protein Size:	134.3 kDa
Gene Name:	transient receptor potential cation channel subfamily M member 4
Database Link:	NP_060106 Entrez Gene 54795 Human Q8TD43



[View online »](#)

Background:

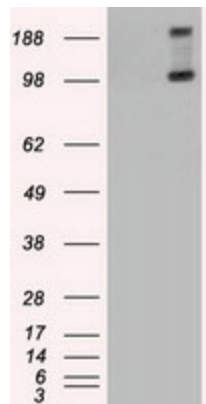
Calcium-activated non selective (CAN) cation channel that mediates membrane depolarization. While it is activated by increase in intracellular Ca^{2+} , it is impermeable to it. Mediates transport of monovalent cations (Na^{+} > K^{+} > Cs^{+} > Li^{+}), leading to depolarize the membrane. It thereby plays a central role in cardiomyocytes, neurons from entorhinal cortex, dorsal root and vomeronasal neurons, endocrine pancreas cells, kidney epithelial cells, cochlea hair cells etc. Participates in T-cell activation by modulating Ca^{2+} oscillations after T lymphocyte activation, which is required for NFAT-dependent IL2 production. Involved in myogenic constriction of cerebral arteries. Controls insulin secretion in pancreatic beta-cells. May also be involved in pacemaking or could cause irregular electrical activity under conditions of Ca^{2+} overload

Synonyms:

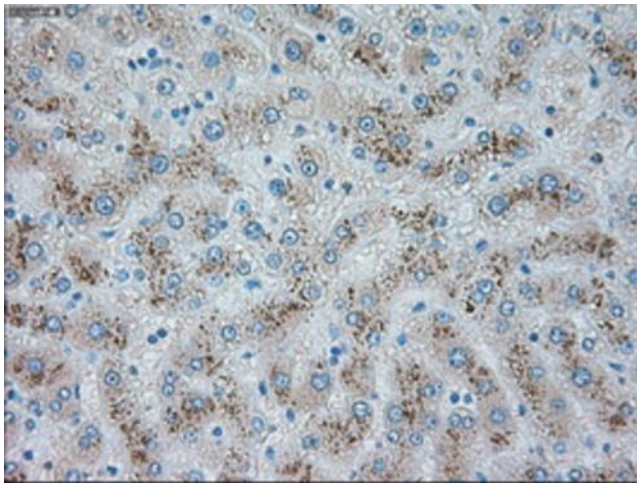
hTRPM4; LTrpC4; PFHB1B; TRPM4B

Protein Families:

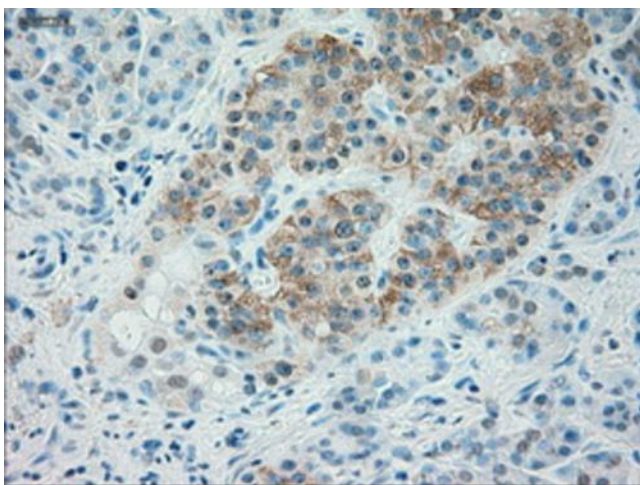
Druggable Genome, Ion Channels: Transient receptor potential, Transmembrane

Product images:

HEK293T cells were transfected with the pCMV6-ENTRY control (Left lane) or pCMV6-ENTRY TRPM4 [RC216888], Right lane) cDNA for 48 hrs and lysed. Equivalent amounts of cell lysates (5 ug per lane) were separated by SDS-PAGE and immunoblotted with anti-TRPM4. Positive lysates [LY413636] (100ug) and [LC413636] (20ug) can be purchased separately from OriGene.



Immunohistochemical staining of paraffin-embedded liver tissue within the normal limits using anti-TRPM4 mouse monoclonal antibody. Heat-induced epitope retrieval by EDTA solution buffer pH 8.0 at 120°C for 3 min.



Immunohistochemical staining of paraffin-embedded pancreas tissue within the normal limits using anti-TRPM4 mouse monoclonal antibody. Heat-induced epitope retrieval by EDTA solution buffer pH 8.0 at 120°C for 3 min.