

## Product datasheet for **TA500366**

### SNAIL (SNAI1) Mouse Monoclonal Antibody [Clone ID: OTI10D7]

#### Product data:

Product Type:	Primary Antibodies
Clone Name:	OTI10D7
Applications:	WB
Recommended Dilution:	WB 1:1000
Reactivity:	Human, Mouse, Rat
Host:	Mouse
Isotype:	IgG1
Clonality:	Monoclonal
Immunogen:	Full-length protein expressed in 293T cell transfected with human SNAI1 expression vector
Formulation:	PBS (pH 7.3) containing 1% BSA, 50% glycerol and 0.02% sodium azide.
Concentration:	1 mg/ml
Purification:	Purified from mouse ascites fluids or tissue culture supernatant by affinity chromatography (protein A/G)
Conjugation:	Unconjugated
Storage:	Store at -20°C as received.
Stability:	Stable for 12 months from date of receipt.
Predicted Protein Size:	29.1 kDa
Gene Name:	snail family transcriptional repressor 1
Database Link:	<a href="#">NP_005976</a> <a href="#">Entrez Gene 20613 Mouse</a> <a href="#">Entrez Gene 116490 Rat</a> <a href="#">Entrez Gene 6615 Human</a> <a href="#">O95863</a>
Background:	The Drosophila embryonic protein snail is a zinc finger transcriptional repressor which downregulates the expression of ectodermal genes within the mesoderm. The nuclear protein encoded by this gene is structurally similar to the Drosophila snail protein, and is also thought to be critical for mesoderm formation in the developing embryo. At least two variants of a similar processed pseudogene have been found on chromosome 2
Synonyms:	dj710H13.1; SLUGH2; SNA; SNAH; SNAI1; SNAIL1



[View online »](#)

Protein Families: Druggable Genome

Protein Pathways: Adherens junction

**Product images:**

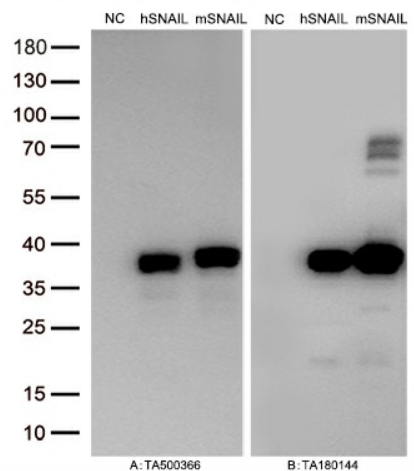
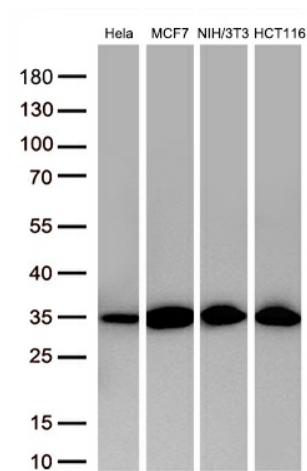


Figure A, Western blot analysis of overexpressed lysates (15ug per lane) from HEK293T cells transfected with empty plasmid ([PS100001], NC), human SNAIL plasmid ([RC204581], hSNAIL), mouse SNAIL plasmid ([MR203505], mSNAIL) using anti-SNAIL antibody TA500366 (1:10000@1mg/ml). Figure B, Western blot analysis of the same samples as figure A with anti-DDK antibody ([TA180144], 1:10000@1mg/ml).



Western blot analysis of extracts (30ug per lane) from 4 different cell lines lysates by using anti-SNAIL antibody(TA500366,1:1000@1mg/ml).