

## Product datasheet for **TA500357**

### MX1 Mouse Monoclonal Antibody [Clone ID: OTI2G12]

#### Product data:

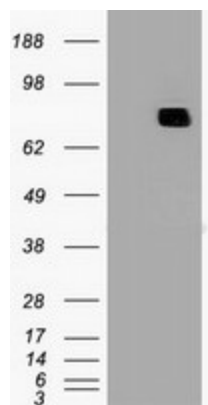
|                         |  |
|-------------------------|--|
| Product Type:           | Primary Antibodies   |
| Clone Name:             | OTI2G12  |
| Applications:           | IF, WB   |
| Recommended Dilution:   | WB 1:2000, IF 1:100  |
| Reactivity:             | Human, Mouse, Rat  |
| Host:                   | Mouse  |
| Isotype:                | IgG1   |
| Clonality:              | Monoclonal   |
| Immunogen:              | Full length human recombinant protein of human MX1 (NP_002453) produced in HEK293T cell.   |
| Formulation:            | PBS (pH 7.3) containing 1% BSA, 50% glycerol and 0.02% sodium azide.   |
| Concentration:          | 1 mg/ml  |
| Purification:           | Purified from mouse ascites fluids or tissue culture supernatant by affinity chromatography (protein A/G)  |
| Conjugation:            | Unconjugated   |
| Storage:                | Store at -20°C as received.  |
| Stability:              | Stable for 12 months from date of receipt.   |
| Predicted Protein Size: | 75.5 kDa   |
| Gene Name:              | MX dynamin like GTPase 1   |
| Database Link:          | <a href="#">NP_002453</a><br><a href="#">Entrez Gene 4599 Human</a><br><a href="#">P20591</a>  |
| Background:             | In mouse, the interferon-inducible Mx protein is responsible for a specific antiviral state against influenza virus infection. The protein encoded by this gene is similar to the mouse protein as determined by its antigenic relatedness, induction conditions, physicochemical properties, and amino acid analysis. This cytoplasmic protein is a member of both the dynamin family and the family of large GTPases. Two transcript variants encoding the same protein have been found for this gene. |


[View online »](#)

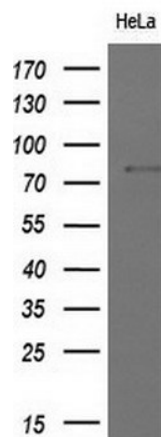
**Synonyms:** IFI-78K; IFI78; MX; MxA

**Protein Families:** Druggable Genome

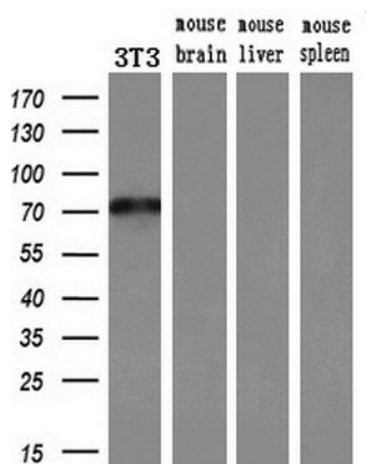
## Product images:



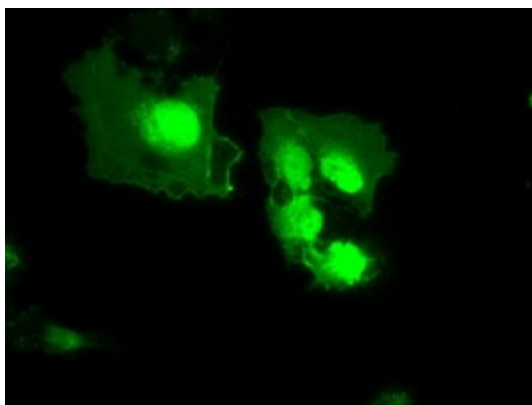
HEK293T cells were transfected with the pCMV6-ENTRY control (Cat# [PS100001], Left lane) or pCMV6-ENTRY MX1 (Cat# [RC207418], Right lane) cDNA for 48 hrs and lysed. Equivalent amounts of cell lysates (5 ug per lane) were separated by SDS-PAGE and immunoblotted with anti-MX1 (Cat# TA500357). Positive lysates [LY400886] (100ug) and [LC400886] (20ug) can be purchased separately from OriGene.



Western blot analysis of extracts (10ug) from 1 cell lines by using anti-MX1 monoclonal antibody at 1:200 dilution.



Western blot analysis of extracts (10ug) from a mouse cell line and 3 different mouse tissues by using anti-MX1 monoclonal antibody (1:200).



Anti-MX1 mouse monoclonal antibody (TA500357) immunofluorescent staining of COS7 cells transiently transfected by pCMV6-ENTRY MX1 ([RC207418]).