

## Product datasheet for **TA500351**

### Prominin 2 (PROM2) Mouse Monoclonal Antibody [Clone ID: OTI14D1]

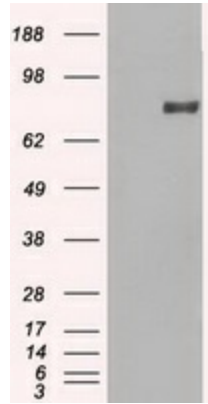
#### Product data:

Product Type:	Primary Antibodies
Clone Name:	OTI14D1
Applications:	IF, IHC, WB
Recommended Dilution:	WB 1:5000, IHC 1:50, IF 1:100
Reactivity:	Human
Host:	Mouse
Isotype:	IgG1
Clonality:	Monoclonal
Immunogen:	Full-length protein expressed in 293T cell transfected with human PROM2 expression vector
Formulation:	PBS (pH 7.3) containing 1% BSA, 50% glycerol and 0.02% sodium azide
Concentration:	0.8 mg/ml
Purification:	Purified from mouse ascites fluids or tissue culture supernatant by affinity chromatography (protein A/G)
Conjugation:	Unconjugated
Storage:	Store at -20°C as received.
Stability:	Stable for 12 months from date of receipt.
Predicted Protein Size:	91.8 kDa
Gene Name:	prominin 2
Database Link:	<a href="#">NP_653308</a> <a href="#">Entrez Gene 150696 Human</a> <a href="#">Q8N271</a>
Synonyms:	PROML2
Protein Families:	Transmembrane

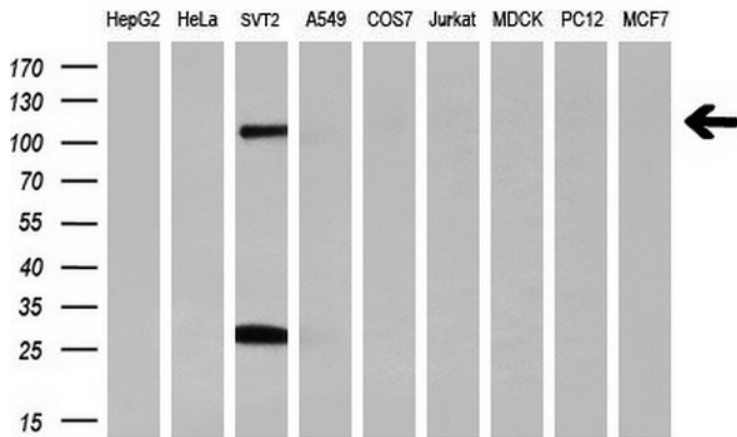


[View online »](#)

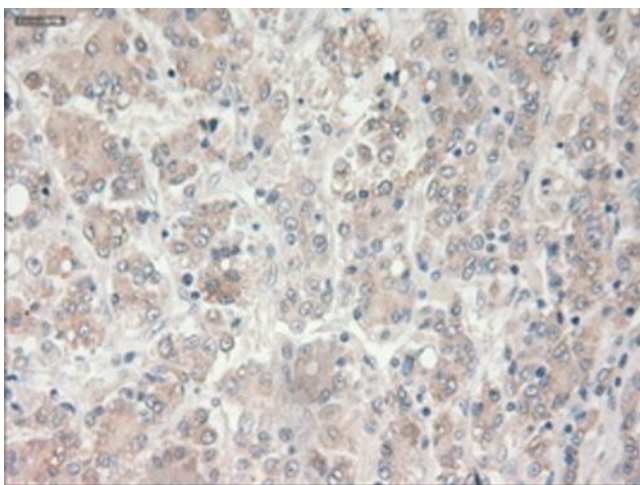
Product images:



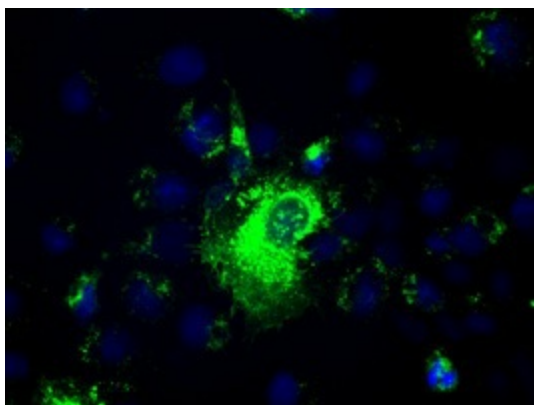
HEK293T cells were transfected with the pCMV6-ENTRY control (Left lane) or pCMV6-ENTRY PROM2 ([RC211605], Right lane) cDNA for 48 hrs and lysed. Equivalent amounts of cell lysates (5 ug per lane) were separated by SDS-PAGE and immunoblotted with anti-PROM2. Positive lysates [LY403405] (100ug) and [LC403405] (20ug) can be purchased separately from OriGene.



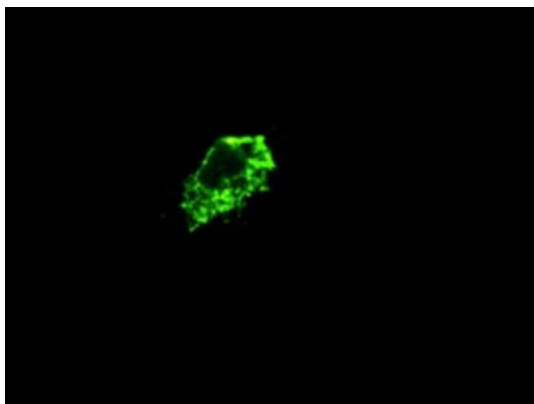
Western blot analysis of extracts (35ug) from 9 different cell lines by using anti-PROM2 monoclonal antibody (HepG2: human; HeLa: human; SVT2: mouse; A549: human; COS7: monkey; Jurkat: human; MDCK: canine; PC12: rat; MCF7: human) (1:200).



Immunohistochemical staining of paraffin-embedded Carcinoma of liver tissue using anti-PROM2 mouse monoclonal antibody. Heat-induced epitope retrieval by EDTA solution buffer pH 8.0 at 120°C for 3 min.



Anti-PROM2 mouse monoclonal antibody (TA500351) immunofluorescent staining of COS7 cells transiently transfected by pCMV6-ENTRY PROM2 ([RC211605]).



Immunofluorescent staining of Cos7 cells using anti-PROM2 mouse monoclonal antibody (TA500351).