

Product datasheet for **TA500350M**

Prominin 2 (PROM2) Mouse Monoclonal Antibody [Clone ID: OTI13A9]

Product data:

Product Type:	Primary Antibodies
Clone Name:	OTI13A9
Applications:	IF, IHC, WB
Recommended Dilution:	WB 1:5000, IHC 1:50, IF 1:100
Reactivity:	Human
Host:	Mouse
Isotype:	IgG1
Clonality:	Monoclonal
Immunogen:	Full-length protein expressed in 293T cell transfected with human PROM2 expression vector
Formulation:	PBS (pH 7.3) containing 1% BSA, 50% glycerol and 0.02% sodium azide
Concentration:	0.75 mg/ml
Purification:	Purified from mouse ascites fluids or tissue culture supernatant by affinity chromatography (protein A/G)
Conjugation:	Unconjugated
Storage:	Store at -20°C as received.
Stability:	Stable for 12 months from date of receipt.
Predicted Protein Size:	91.8 kDa
Gene Name:	prominin 2
Database Link:	NP_653308 Entrez Gene 150696 Human Q8N271
Synonyms:	PROML2
Protein Families:	Transmembrane


[View online »](#)

Product images:

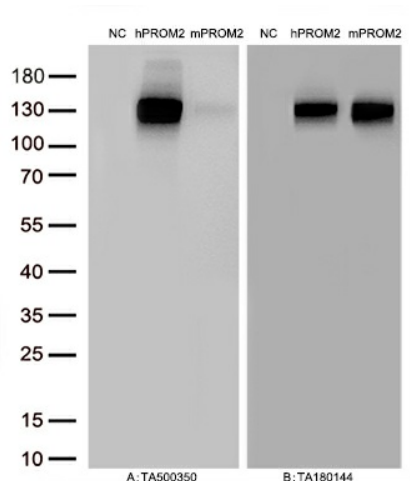
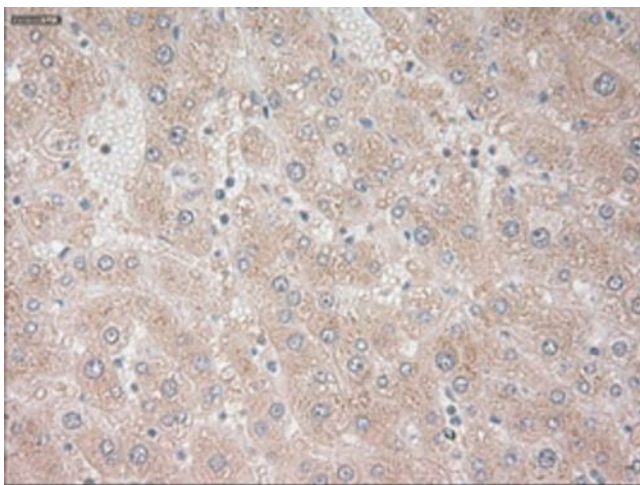
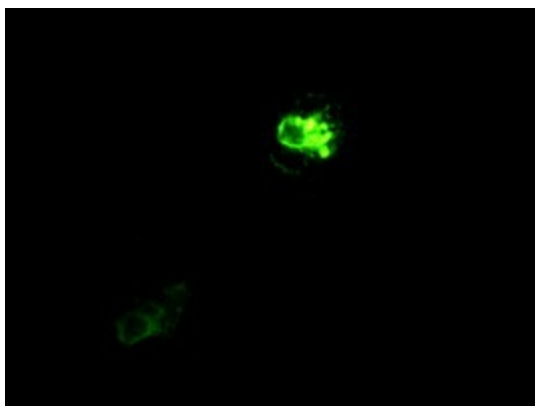


Figure A, Western blot analysis of overexpressed lysates (25ug per lane) from HEK293T cells transfected with empty plasmid ([PS100001], NC), human PROM2 plasmid ([RC211605], hPROM2), mouse PROM2 plasmid ([MR216732], mPROM2) using anti-PROM2 antibody [TA500350] (1:500). Figure B, Western blot analysis of the same samples as figure A with anti-DDK antibody ([TA180144], 1:1000).



Immunohistochemical staining of paraffin-embedded liver tissue within the normal limits using anti-PROM2 mouse monoclonal antibody. Heat-induced epitope retrieval by EDTA solution buffer pH 8.0 at 120°C for 3 min.



Immunofluorescent staining of Cos7 cells using anti-PROM2 mouse monoclonal antibody ([TA500350]).