

Product datasheet for **TA500349**

Prominin 2 (PROM2) Mouse Monoclonal Antibody [Clone ID: OTI3D12]

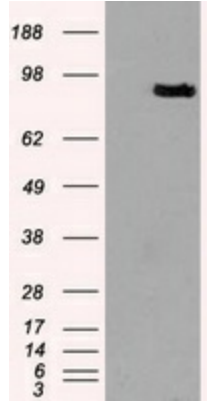
Product data:

| | |
|-------------------------|---|
| Product Type: | Primary Antibodies |
| Clone Name: | OTI3D12 |
| Applications: | IF, WB |
| Recommended Dilution: | WB 1:2000, IF 1:100 |
| Reactivity: | Human |
| Host: | Mouse |
| Isotype: | IgG2b |
| Clonality: | Monoclonal |
| Immunogen: | Full-length protein expressed in 293T cell transfected with human PROM2 expression vector |
| Formulation: | PBS (pH 7.3) containing 1% BSA, 50% glycerol and 0.02% sodium azide |
| Concentration: | 1 mg/ml |
| Purification: | Purified from mouse ascites fluids or tissue culture supernatant by affinity chromatography (protein A/G) |
| Conjugation: | Unconjugated |
| Storage: | Store at -20°C as received. |
| Stability: | Stable for 12 months from date of receipt. |
| Predicted Protein Size: | 91.883 kDa |
| Gene Name: | prominin 2 |
| Database Link: | NP_653308 Entrez Gene 150696 Human Q8N271 |
| Synonyms: | PROML2 |
| Protein Families: | Transmembrane |

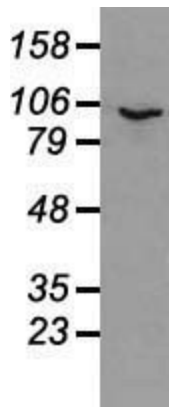


[View online »](#)

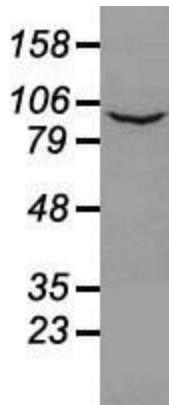
Product images:



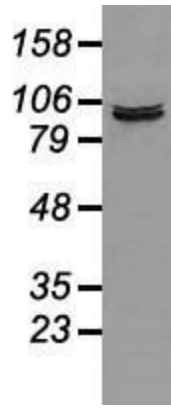
HEK293T cells were transfected with the pCMV6-ENTRY control (Cat# [PS100001], Left lane) or pCMV6-ENTRY PROM2 (Cat# [RC211605], Right lane) cDNA for 48 hrs and lysed. Equivalent amounts of cell lysates (5 ug per lane) were separated by SDS-PAGE and immunoblotted with anti-PROM2(Cat# TA500349). Positive lysates [LY403405] (100ug) and [LC403405] (20ug) can be purchased separately from OriGene.



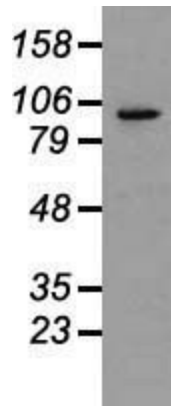
Western blot analysis of 35ug of cell extracts from human Liver carcinoma (HepG2) cells using anti-PROM2 antibody.



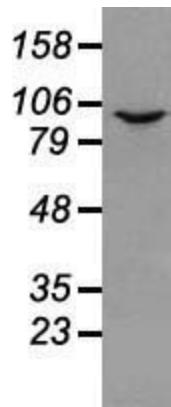
Western blot analysis of 35ug of cell extracts from human (HeLa) cells using anti-PROM2 antibody.



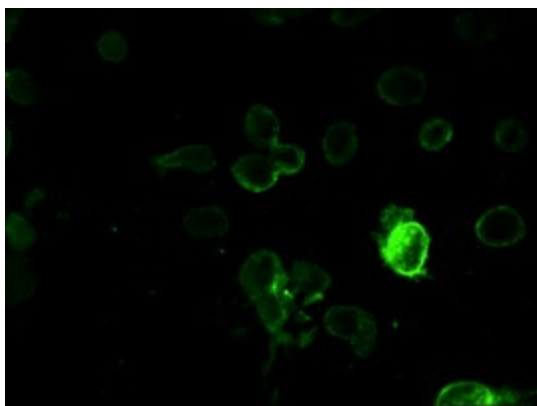
Western blot analysis of 35ug of cell extracts from human colon adenocarcinoma (HT29) cells using anti-PROM2 antibody.



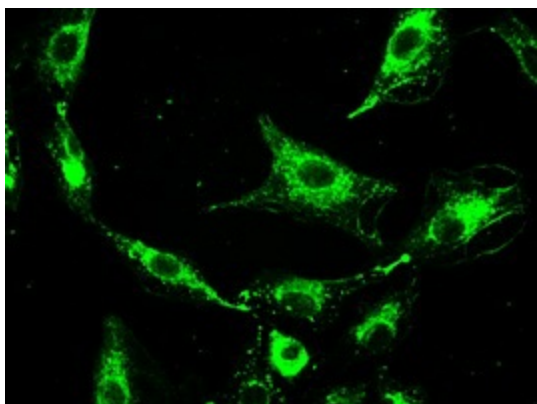
Western blot analysis of 35ug of cell extracts from human Lung adenocarcinoma (A549) cells using anti-PROM2 antibody.



Western blot analysis of 35ug of cell extracts from canine Kidney (MDCK) cells using anti-PROM2 antibody.



Immunofluorescent staining of Cos7 cells using anti-PROM2 mouse monoclonal antibody (TA500349).



Immunofluorescent staining of A549 cells using anti-PROM2 mouse monoclonal antibody (TA500349).