

Product datasheet for **TA500341S**

GFAP Mouse Monoclonal Antibody [Clone ID: OTI2D8]

Product data:

| | |
|-------------------------|---|
| Product Type: | Primary Antibodies |
| Clone Name: | OTI2D8 |
| Applications: | IF, WB |
| Recommended Dilution: | WB 1:1000~2000, IF 1:50~100 |
| Reactivity: | Human, Rat, Monkey, Mouse |
| Host: | Mouse |
| Isotype: | IgG2b |
| Clonality: | Monoclonal |
| Immunogen: | Full length human recombinant protein of human GFAP (NP_002046) produced in HEK293T cell. |
| Formulation: | PBS (pH 7.3) containing 1% BSA, 50% glycerol and 0.02% sodium azide. |
| Concentration: | 1.5 mg/ml |
| Purification: | Purified from mouse ascites fluids or tissue culture supernatant by affinity chromatography (protein A/G) |
| Conjugation: | Unconjugated |
| Storage: | Store at -20°C as received. |
| Stability: | Stable for 12 months from date of receipt. |
| Predicted Protein Size: | 49.9 kDa |
| Gene Name: | glial fibrillary acidic protein |
| Database Link: | NP_002046 Entrez Gene 14580 Mouse Entrez Gene 24387 Rat Entrez Gene 712941 Monkey Entrez Gene 2670 Human P14136 |
| Background: | This gene encodes one of the major intermediate filament proteins of mature astrocytes. It is used as a marker to distinguish astrocytes from other glial cells during development. Mutations in this gene cause Alexander disease, a rare disorder of astrocytes in the central nervous system. Alternative splicing results in multiple transcript variants encoding distinct isoforms. |

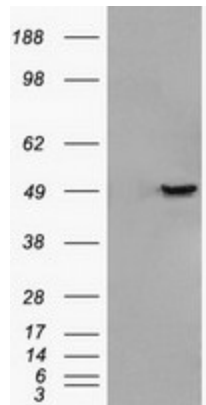


[View online »](#)

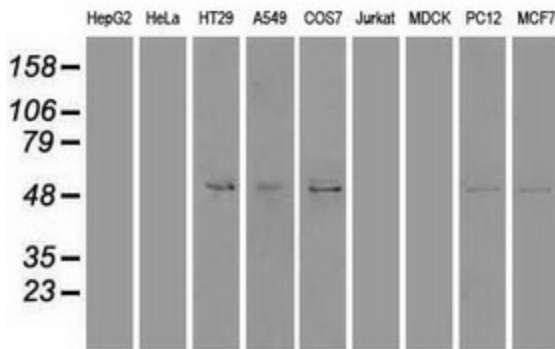
Synonyms: ALXDRD

Protein Families: ES Cell Differentiation/IPS

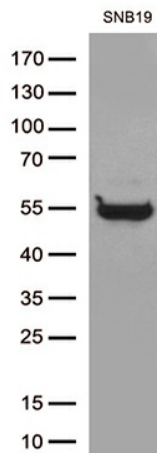
Product images:



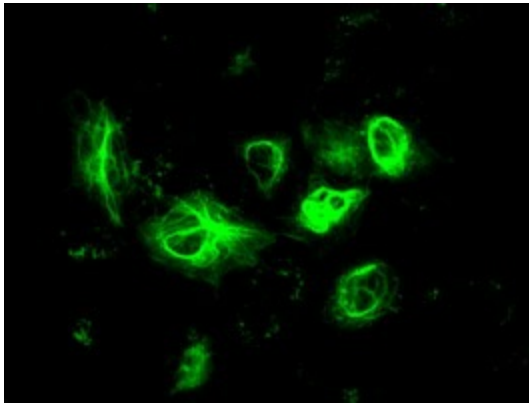
HEK293T cells were transfected with the pCMV6-ENTRY control (Left lane) or pCMV6-ENTRY GFAP ([RC204548], Right lane) cDNA for 48 hrs and lysed. Equivalent amounts of cell lysates (5 ug per lane) were separated by SDS-PAGE and immunoblotted with anti-GFAP. Positive lysates [LY419563] (100ug) and [LC419563] (20ug) can be purchased separately from OriGene.



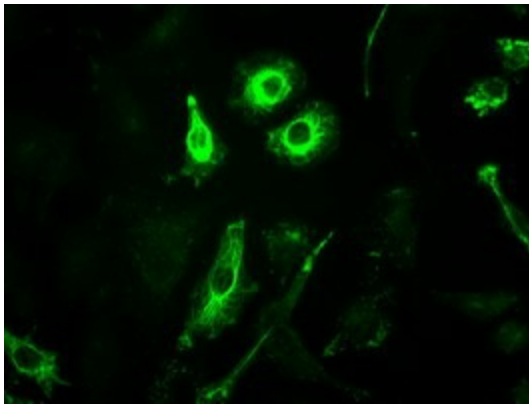
Western blot analysis of extracts (35ug) from 9 different cell lines by using anti-GFAP monoclonal antibody.



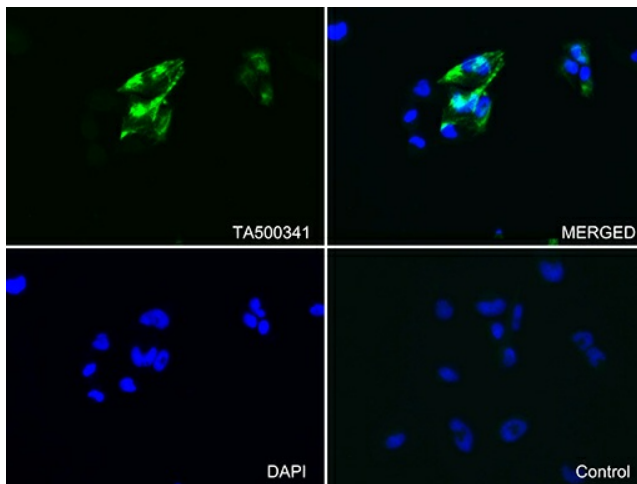
Western blot analysis of extracts (35ug) from 1 cell line lysate by using anti-GFAP monoclonal antibody (1:500).



Anti-GFAP mouse monoclonal antibody ([TA500341]) immunofluorescent staining of COS7 cells transiently transfected by pCMV6-ENTRY GFAP ([RC204548]).



Immunofluorescent staining of A549 cells using anti-GFAP mouse monoclonal antibody ([TA500341]).



Immunofluorescent staining of SNB-19 cells using anti-GFAP antibody ([TA500341]/green, upper left; DAPI/blue, lower left; MERGED, upper right) or Isotype control (MERGED, lower right) (1:100).