

## Product datasheet for **TA500339S**

### GFAP Mouse Monoclonal Antibody [Clone ID: OTI5B1]

#### Product data:

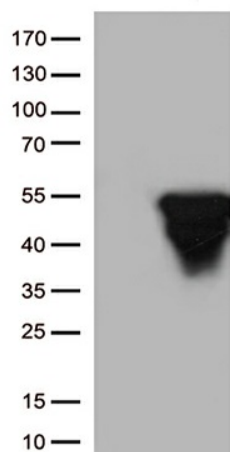
Product Type:	Primary Antibodies
Clone Name:	OTI5B1
Applications:	IF, IHC, WB
Recommended Dilution:	WB 1:2000, IF 1:100
Reactivity:	Human, Mouse, Rat
Host:	Mouse
Isotype:	IgG1
Clonality:	Monoclonal
Immunogen:	Full-length protein expressed in 293T cell transfected with human GFAP expression vector
Formulation:	PBS (pH 7.3) containing 1% BSA, 50% glycerol and 0.02% sodium azide
Concentration:	1 mg/ml
Purification:	Purified from mouse ascites fluids or tissue culture supernatant by affinity chromatography (protein A/G)
Conjugation:	Unconjugated
Storage:	Store at -20°C as received.
Stability:	Stable for 12 months from date of receipt.
Predicted Protein Size:	49.88 kDa
Gene Name:	glial fibrillary acidic protein
Database Link:	<a href="#">NP_002046</a> <a href="#">Entrez Gene 14580 Mouse</a> <a href="#">Entrez Gene 24387 Rat</a> <a href="#">Entrez Gene 2670 Human</a> <a href="#">P14136</a>
Background:	This gene encodes one of the major intermediate filament proteins of mature astrocytes. It is used as a marker to distinguish astrocytes from other glial cells during development. Mutations in this gene cause Alexander disease, a rare disorder of astrocytes in the central nervous system. Alternative splicing results in multiple transcript variants encoding distinct isoforms.
Synonyms:	ALXDRD



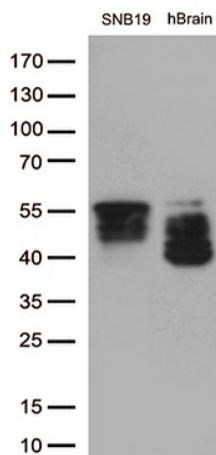
[View online »](#)

Protein Families: ES Cell Differentiation/IPS

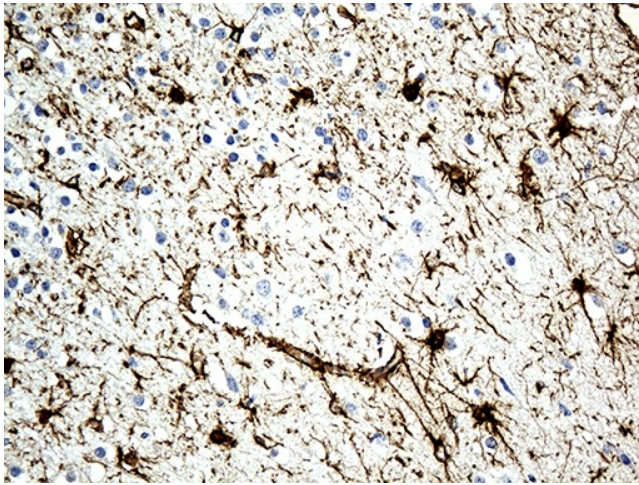
### Product images:



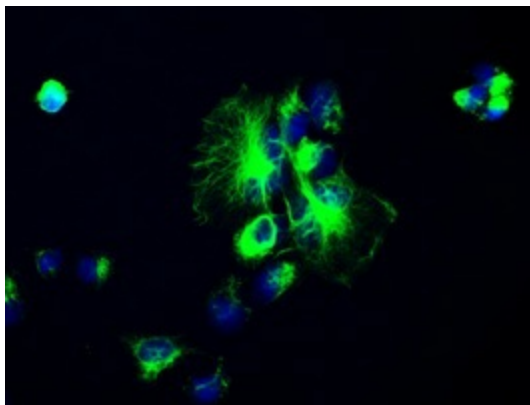
HEK293T cells were transfected with the pCMV6-ENTRY control (Left lane) or pCMV6-ENTRY GFAP ([RC204548], Right lane) cDNA for 48 hrs and lysed. Equivalent amounts of cell lysates (5 ug per lane) were separated by SDS-PAGE and immunoblotted with anti-GFAP (1:500).



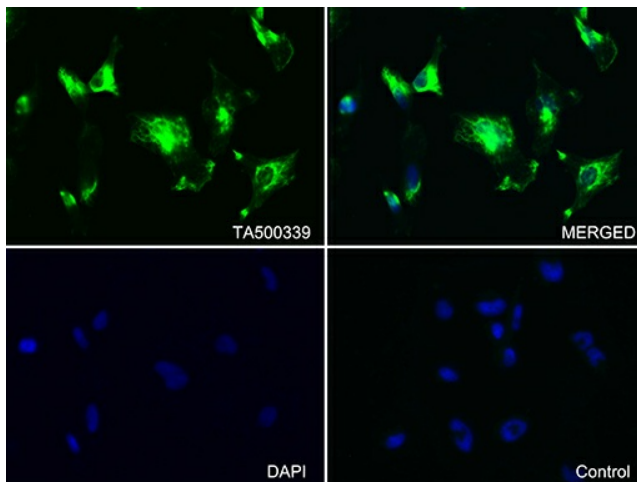
Western blot analysis of extracts (35ug) from 1 cell line lysate and 1 tissue lysate by using anti-GFAP monoclonal antibody (1:500).



Immunohistochemical staining of paraffin-embedded Human adult brain tissue within the normal limits using anti-GFAP mouse monoclonal antibody. (Heat-induced epitope retrieval by 1mM EDTA in 10mM Tris buffer (pH8.5) at 120°C for 3min, [TA500339]) (1:500)



Anti-GFAP mouse monoclonal antibody ([TA500339]) immunofluorescent staining of COS7 cells transiently transfected by pCMV6-ENTRY GFAP ([RC204548]). (The nuclei were counter-stained in blue.) (1:100)



Immunofluorescent staining of SNB-19 cells using anti-GFAP antibody ([TA500339]/green, upper left; DAPI/blue, lower left; MERGED, upper right) or Isotype control (MERGED, lower right) (1:100).