

Product datasheet for **TA500337BM**

GFAP Mouse Monoclonal Antibody (HRP conjugated) [Clone ID: OTI4G8]

Product data:

Product Type:	Primary Antibodies
Clone Name:	OTI4G8
Applications:	ELISA, IF, IHC, WB
Recommended Dilution:	WB 1:500~1000, IHC 1:50, IF 1:100
Reactivity:	Human, Rat, Mouse
Host:	Mouse
Isotype:	IgG1
Clonality:	Monoclonal
Immunogen:	Full length human recombinant protein of human GFAP (NP_002046) produced in HEK293T cell.
Formulation:	PBS (pH 7.3) containing 1% BSA, 50% glycerol.
Concentration:	0.5 mg/ml
Purification:	Purified from mouse ascites fluids or tissue culture supernatant by affinity chromatography (protein A/G)
Conjugation:	HRP
Storage:	Store at -20°C as received.
Stability:	Stable for 12 months from date of receipt.
Predicted Protein Size:	49.9 kDa
Gene Name:	glial fibrillary acidic protein
Database Link:	NP_002046 Entrez Gene 14580 Mouse Entrez Gene 24387 Rat Entrez Gene 2670 Human P14136
Background:	This gene encodes one of the major intermediate filament proteins of mature astrocytes. It is used as a marker to distinguish astrocytes from other glial cells during development. Mutations in this gene cause Alexander disease, a rare disorder of astrocytes in the central nervous system. Alternative splicing results in multiple transcript variants encoding distinct isoforms.

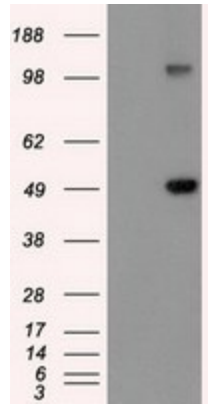


[View online »](#)

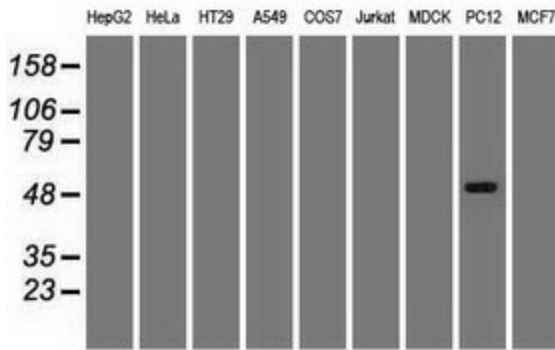
Synonyms: ALXDRD

Protein Families: ES Cell Differentiation/IPS

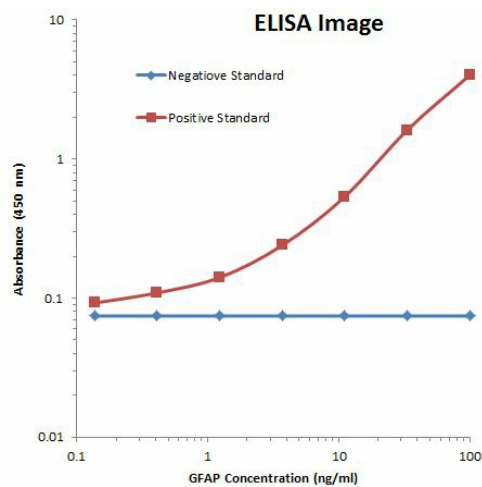
Product images:



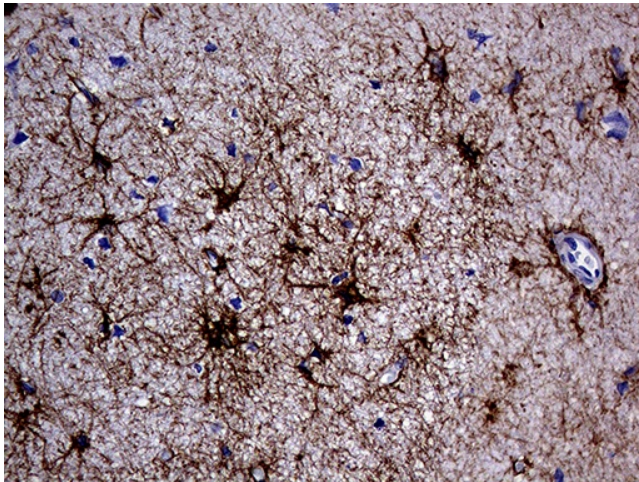
HEK293T cells were transfected with the pCMV6-ENTRY control (Left lane) or pCMV6-ENTRY GFAP ([RC204548], Right lane) cDNA for 48 hrs and lysed. Equivalent amounts of cell lysates (5 ug per lane) were separated by SDS-PAGE and immunoblotted with anti-GFAP. Positive lysates [LY419563] (100ug) and [LC419563] (20ug) can be purchased separately from OriGene.



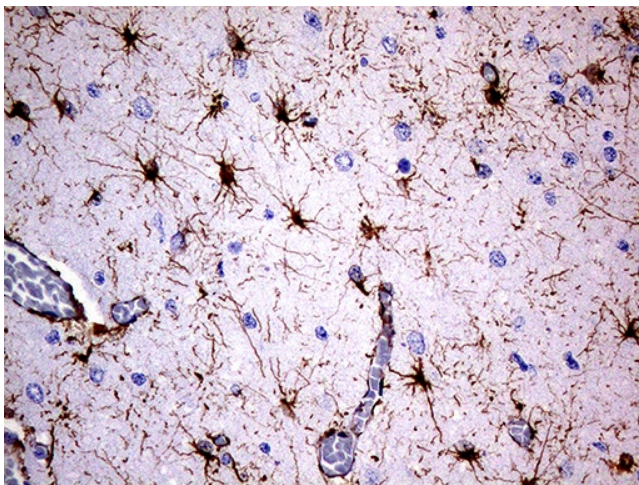
Western blot analysis of extracts (35ug) from 9 different cell lines by using anti-GFAP monoclonal antibody.



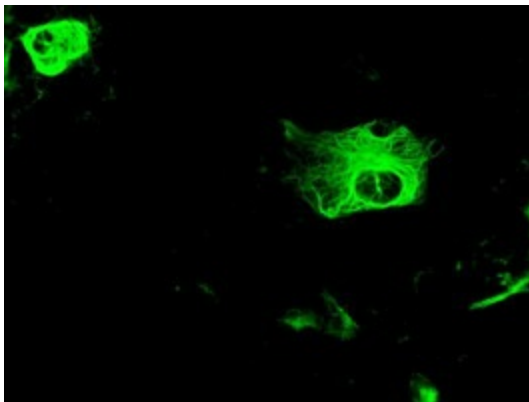
GFAP ELISA with 4G8 Capture ([TA500337]) and 2F7 Detection ([TA700040]) Antibodies. Substrate used: Recombinant Human GFAP ([TP304548])



Immunohistochemical staining of paraffin-embedded Human embryonic brain cortex tissue within the normal limits using anti-GFAP mouse monoclonal antibody. (Heat-induced epitope retrieval by 1mM EDTA in 10mM Tris buffer (pH8.0) at 120°C for 3min, [TA500337])



Immunohistochemical staining of paraffin-embedded Human embryonic cerebellum within the normal limits using anti-GFAP mouse monoclonal antibody. (Heat-induced epitope retrieval by 1mM EDTA in 10mM Tris buffer (pH8.0) at 120°C for 3min) (1:500)



Anti-GFAP mouse monoclonal antibody ([TA500337]) immunofluorescent staining of COS7 cells transiently transfected by pCMV6-ENTRY GFAP ([RC204548]).