

## Product datasheet for **TA500335**

### GFAP Mouse Monoclonal Antibody [Clone ID: OTI2C4]

#### Product data:

Product Type:	Primary Antibodies
Clone Name:	OTI2C4
Applications:	IF, WB
Recommended Dilution:	WB 1:2000, IHC 1:50, IF 1:100
Reactivity:	Human, Mouse, Rat
Host:	Mouse
Isotype:	IgG2b
Clonality:	Monoclonal
Immunogen:	Full length human recombinant protein of human GFAP (NP_002046) produced in HEK293T cell.
Formulation:	PBS (pH 7.3) containing 1% BSA, 50% glycerol and 0.02% sodium azide.
Concentration:	1.5 mg/ml
Purification:	Purified from mouse ascites fluids or tissue culture supernatant by affinity chromatography (protein A/G)
Conjugation:	Unconjugated
Storage:	Store at -20°C as received.
Stability:	Stable for 12 months from date of receipt.
Predicted Protein Size:	49.9 kDa
Gene Name:	glial fibrillary acidic protein
Database Link:	<a href="#">NP_002046</a> <a href="#">Entrez Gene 14580 Mouse</a> <a href="#">Entrez Gene 24387 Rat</a> <a href="#">Entrez Gene 2670 Human</a> <a href="#">P14136</a>
Background:	This gene encodes one of the major intermediate filament proteins of mature astrocytes. It is used as a marker to distinguish astrocytes from other glial cells during development. Mutations in this gene cause Alexander disease, a rare disorder of astrocytes in the central nervous system. Alternative splicing results in multiple transcript variants encoding distinct isoforms.

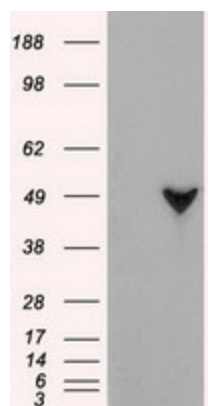


[View online »](#)

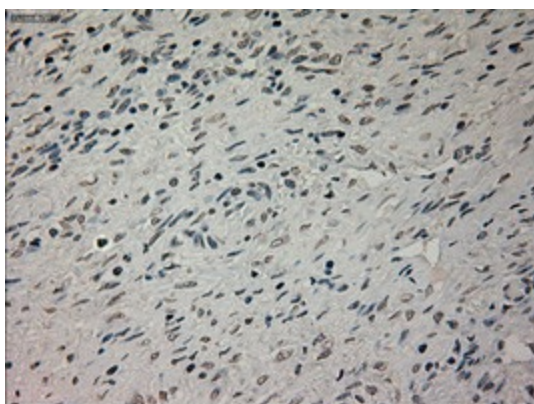
Synonyms: ALXDRD

Protein Families: ES Cell Differentiation/IPS

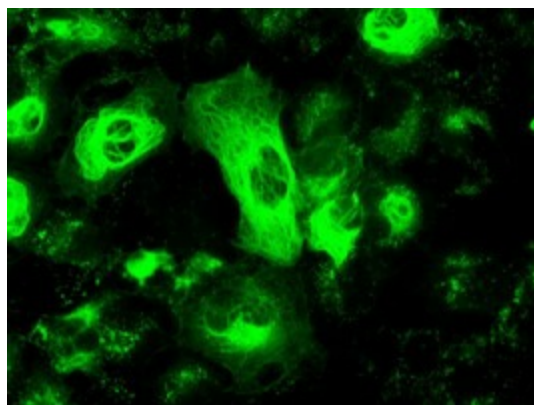
### Product images:



HEK293T cells were transfected with the pCMV6-ENTRY control (Left lane) or pCMV6-ENTRY GFAP ([RC204548], Right lane) cDNA for 48 hrs and lysed. Equivalent amounts of cell lysates (5 ug per lane) were separated by SDS-PAGE and immunoblotted with anti-GFAP. Positive lysates [LY419563] (100ug) and [LC419563] (20ug) can be purchased separately from OriGene.



Immunohistochemical staining of paraffin-embedded Human Ovary tissue within the normal limits using anti-GFAP mouse monoclonal antibody. (Heat-induced epitope retrieval by 10mM citric buffer, pH6.0, 100°C for 10min, TA500335)



Anti-GFAP mouse monoclonal antibody (TA500335) immunofluorescent staining of COS7 cells transiently transfected by pCMV6-ENTRY GFAP ([RC204548]).