

Product datasheet for **TA500331AM**

Prominin 2 (PROM2) Mouse Monoclonal Antibody (Biotin conjugated) [Clone ID: OTI6B7]

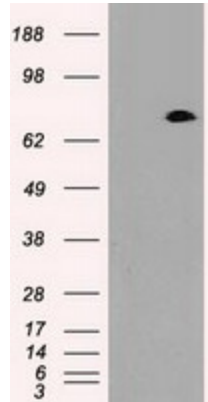
Product data:

Product Type:	Primary Antibodies
Clone Name:	OTI6B7
Applications:	IHC, WB
Recommended Dilution:	WB 1:2000, IHC 1:50
Reactivity:	Human
Host:	Mouse
Isotype:	IgG1
Clonality:	Monoclonal
Immunogen:	Full-length protein expressed in 293T cell transfected with human PROM2 expression vector
Formulation:	PBS (pH 7.3) containing 1% BSA, 50% glycerol and 0.02% sodium azide.
Concentration:	0.5 mg/ml
Purification:	Purified from mouse ascites fluids or tissue culture supernatant by affinity chromatography (protein A/G)
Conjugation:	Biotin
Storage:	Store at -20°C as received.
Stability:	Stable for 12 months from date of receipt.
Predicted Protein Size:	91.9 kDa
Gene Name:	prominin 2
Database Link:	NP_653308 Entrez Gene 150696 Human Q8N271
Synonyms:	PROML2
Protein Families:	Transmembrane

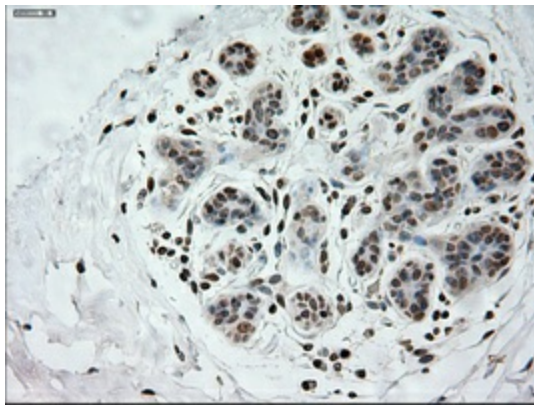


[View online »](#)

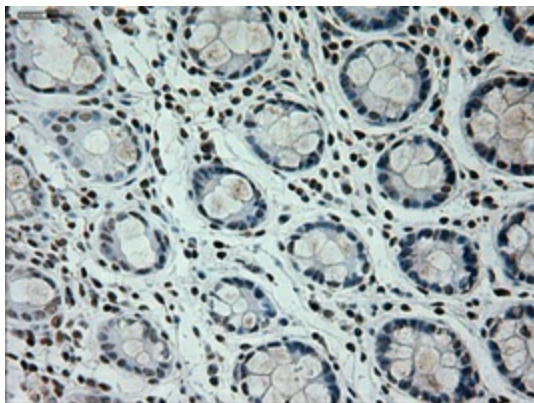
Product images:



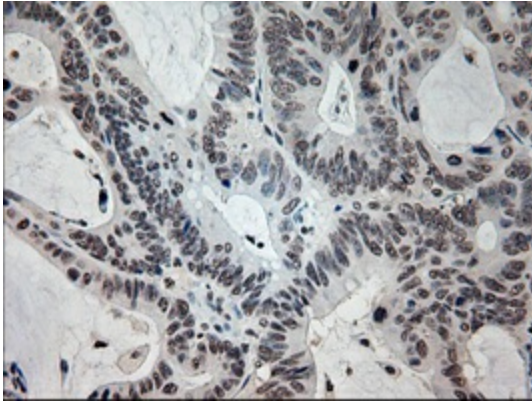
HEK293T cells were transfected with the pCMV6-ENTRY control (Left lane) or pCMV6-ENTRY PROM2 ([RC211605], Right lane) cDNA for 48 hrs and lysed. Equivalent amounts of cell lysates (5 ug per lane) were separated by SDS-PAGE and immunoblotted with anti-PROM2. Positive lysates [LY403405] (100ug) and [LC403405] (20ug) can be purchased separately from OriGene.



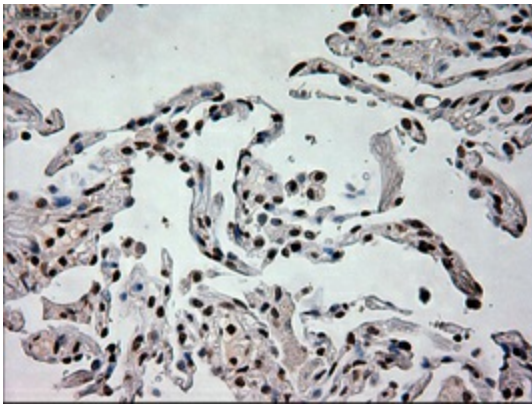
Immunohistochemical staining of paraffin-embedded breast tissue within the normal limits using anti-PROM2 mouse monoclonal antibody. (Heat-induced epitope retrieval by 10mM citric buffer, pH6.0, 100°C for 10min, [TA500331], Dilution 1:50)



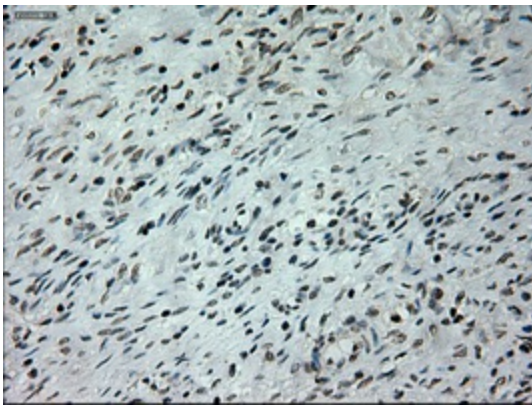
Immunohistochemical staining of paraffin-embedded colon tissue within the normal limits using anti-PROM2 mouse monoclonal antibody. (Heat-induced epitope retrieval by 10mM citric buffer, pH6.0, 100°C for 10min, [TA500331], Dilution 1:50)



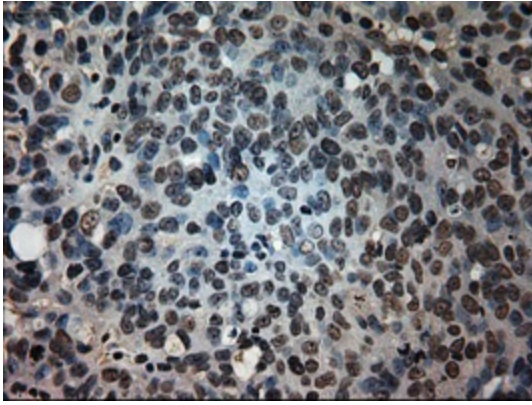
Immunohistochemical staining of paraffin-embedded Adenocarcinoma of colon tissue using anti-PROM2mouse monoclonal antibody. (Heat-induced epitope retrieval by 10mM citric buffer, pH6.0, 100°C for 10min, [TA500331], Dilution 1:50)



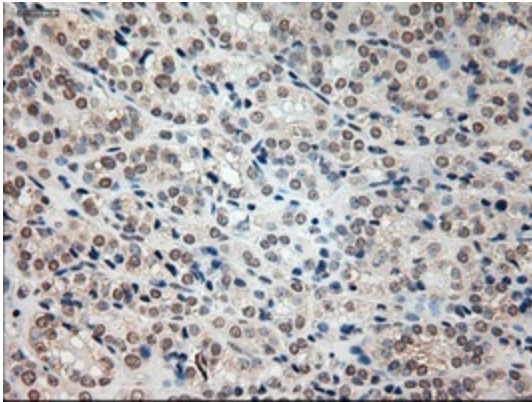
Immunohistochemical staining of paraffin-embedded lung tissue within the normal limits using anti-PROM2mouse monoclonal antibody. (Heat-induced epitope retrieval by 10mM citric buffer, pH6.0, 100°C for 10min, [TA500331], Dilution 1:50)



Immunohistochemical staining of paraffin-embedded Ovary tissue within the normal limits using anti-PROM2mouse monoclonal antibody. (Heat-induced epitope retrieval by 10mM citric buffer, pH6.0, 100°C for 10min, [TA500331], Dilution 1:50)



Immunohistochemical staining of paraffin-embedded Adenocarcinoma of ovary tissue using anti-PROM2mouse monoclonal antibody. (Heat-induced epitope retrieval by 10mM citric buffer, pH6.0, 100°C for 10min, [TA500331], Dilution 1:50)



Immunohistochemical staining of paraffin-embedded Carcinoma of thyroid tissue using anti-PROM2mouse monoclonal antibody. (Heat-induced epitope retrieval by 10mM citric buffer, pH6.0, 100°C for 10min, [TA500331], Dilution 1:50)