

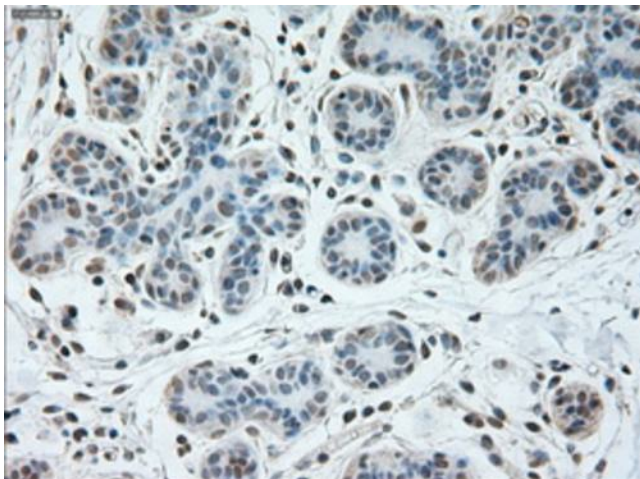
## Product datasheet for **TA500318M**

### USP13 Mouse Monoclonal Antibody [Clone ID: OTI4G11]

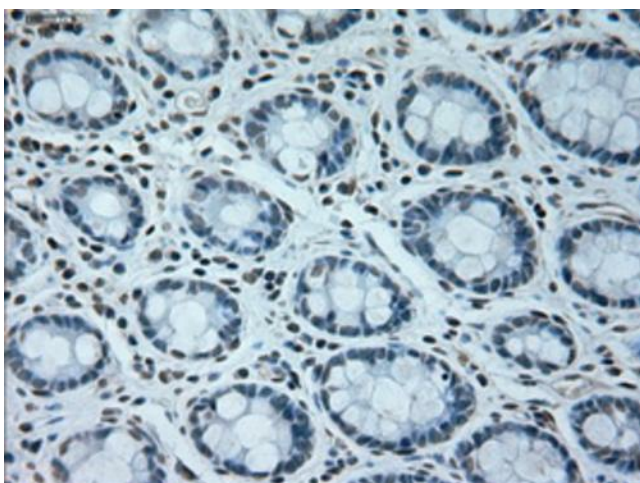
#### Product data:

Product Type:	Primary Antibodies
Clone Name:	OTI4G11
Applications:	IHC, IP
Recommended Dilution:	IHC 1:50, IP: 4ug/mL
Reactivity:	Human, Monkey, Dog, Mouse, Rat
Host:	Mouse
Isotype:	IgG1
Clonality:	Monoclonal
Immunogen:	Full-length protein expressed in 293T cell transfected with human USP13 expression vector
Formulation:	PBS (pH 7.3) containing 1% BSA, 50% glycerol and 0.02% sodium azide.
Concentration:	0.41 mg/ml
Purification:	Purified from mouse ascites fluids or tissue culture supernatant by affinity chromatography (protein A/G)
Conjugation:	Unconjugated
Storage:	Store at -20°C as received.
Stability:	Stable for 12 months from date of receipt.
Predicted Protein Size:	97.3 kDa
Gene Name:	ubiquitin specific peptidase 13
Database Link:	<a href="#">NP_003931</a> <a href="#">Entrez Gene 72607 Mouse</a> <a href="#">Entrez Gene 310306 Rat</a> <a href="#">Entrez Gene 478640 Dog</a> <a href="#">Entrez Gene 708624 Monkey</a> <a href="#">Entrez Gene 8975 Human</a> <a href="#">Q92995</a>
Synonyms:	IsoT-3; ISOT3
Protein Families:	Druggable Genome, Protease

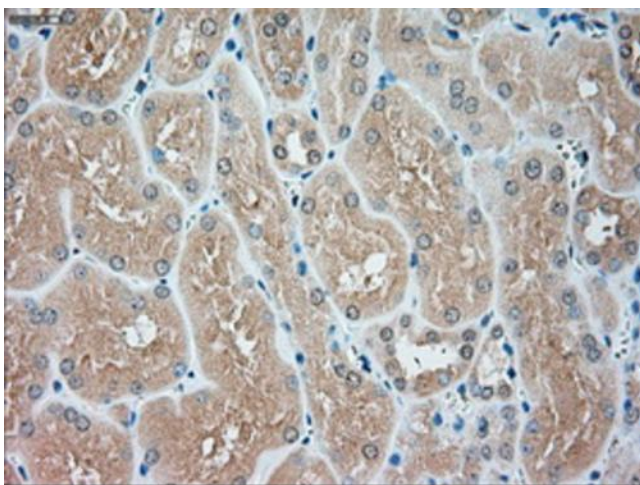

[View online »](#)

**Product images:**

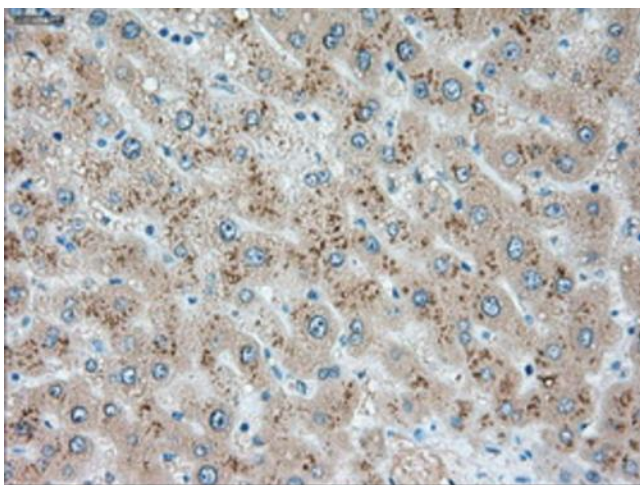
Immunohistochemical staining of paraffin-embedded breast tissue within the normal limits using anti-USP13 mouse monoclonal antibody. Heat-induced epitope retrieval by EDTA solution buffer pH 8.0 at 120°C for 3 min.



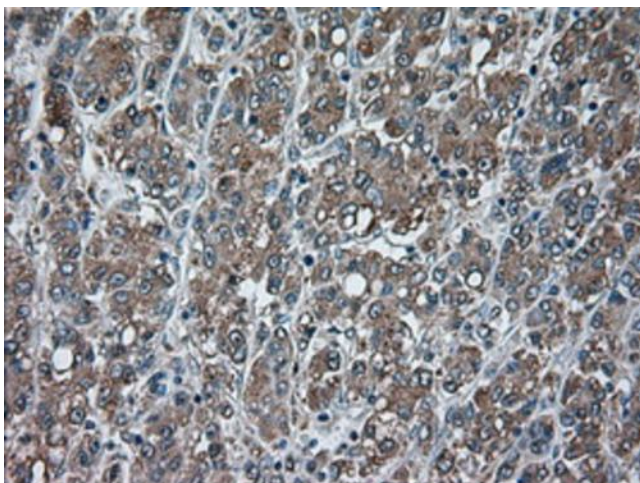
Immunohistochemical staining of paraffin-embedded colon tissue within the normal limits using anti-USP13 mouse monoclonal antibody. Heat-induced epitope retrieval by EDTA solution buffer pH 8.0 at 120°C for 3 min.



Immunohistochemical staining of paraffin-embedded Kidney tissue within the normal limits using anti-USP13mouse monoclonal antibody. Heat-induced epitope retrieval by EDTA solution buffer pH 8.0 at 120°C for 3 min.

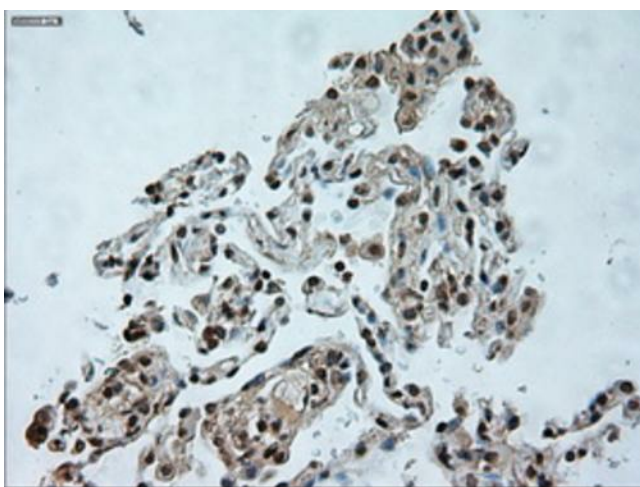


Immunohistochemical staining of paraffin-embedded liver tissue within the normal limits using anti-USP13mouse monoclonal antibody. Heat-induced epitope retrieval by EDTA solution buffer pH 8.0 at 120°C for 3 min.

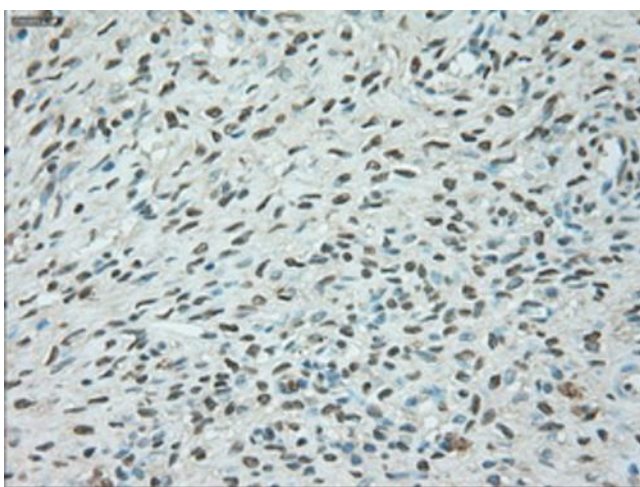


Immunohistochemical staining of paraffin-embedded Carcinoma of liver tissue using anti-USP13mouse monoclonal antibody. Heat-induced epitope retrieval by EDTA solution buffer pH 8.0 at 120°C for 3 min.

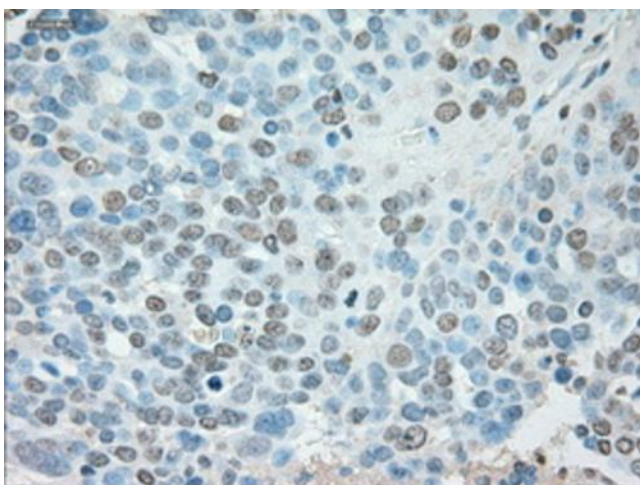




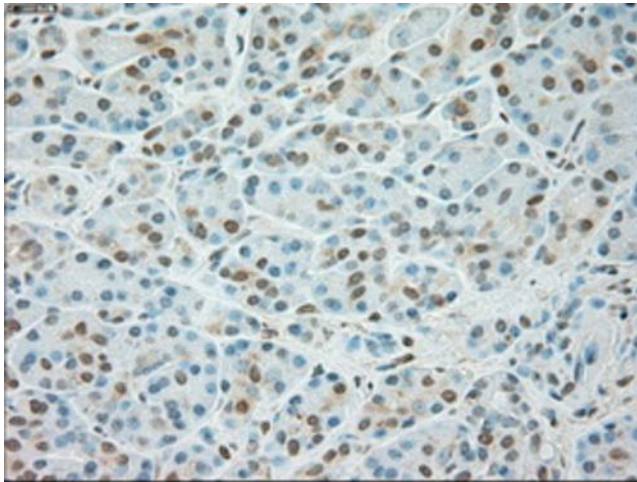
Immunohistochemical staining of paraffin-embedded lung tissue within the normal limits using anti-USP13mouse monoclonal antibody. Heat-induced epitope retrieval by EDTA solution buffer pH 8.0 at 120°C for 3 min.



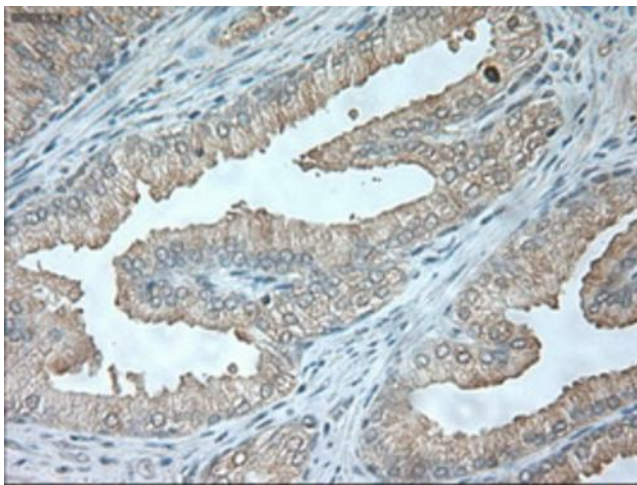
Immunohistochemical staining of paraffin-embedded Ovary tissue within the normal limits using anti-USP13mouse monoclonal antibody. Heat-induced epitope retrieval by EDTA solution buffer pH 8.0 at 120°C for 3 min.



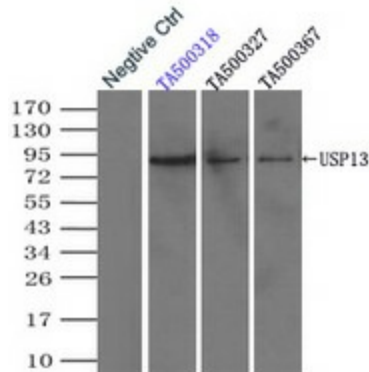
Immunohistochemical staining of paraffin-embedded Adenocarcinoma of ovary tissue using anti-USP13mouse monoclonal antibody. Heat-induced epitope retrieval by EDTA solution buffer pH 8.0 at 120°C for 3 min.



Immunohistochemical staining of paraffin-embedded pancreas tissue within the normal limits using anti-USP13mouse monoclonal antibody. Heat-induced epitope retrieval by EDTA solution buffer pH 8.0 at 120°C for 3 min.



Immunohistochemical staining of paraffin-embedded prostate tissue within the normal limits using anti-USP13mouse monoclonal antibody. Heat-induced epitope retrieval by EDTA solution buffer pH 8.0 at 120°C for 3 min.



Immunoprecipitation (IP) of USP13 by using TrueMab monoclonal anti-USP13 antibodies (Negative control: IP without adding anti-USP13 antibody.). For each experiment, 500ul of DDK tagged USP13 overexpression lysates (at 1:5 dilution with HEK293T lysate), 2ug of anti-USP13 antibody and 20ul (0.1mg) of goat anti-mouse conjugated magnetic beads were mixed and incubated overnight. After extensive wash to remove any non-specific binding, the immunoprecipitated products were analyzed with rabbit anti-DDK polyclonal antibody.