

Product datasheet for **TA500312S**

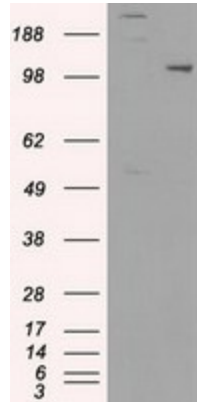
USP38 Mouse Monoclonal Antibody [Clone ID: OTI1D11]

Product data:

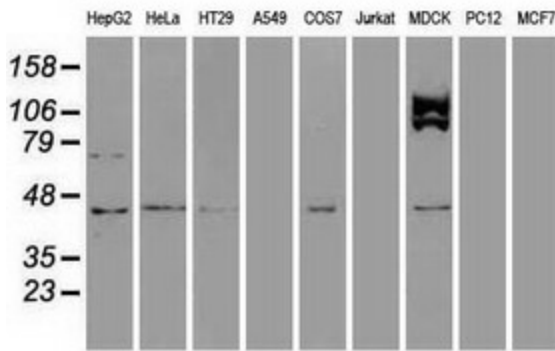
Product Type:	Primary Antibodies
Clone Name:	OTI1D11
Applications:	WB
Recommended Dilution:	WB 1:1000~2000
Reactivity:	Human, Dog, Mouse, Rat
Host:	Mouse
Isotype:	IgM
Clonality:	Monoclonal
Immunogen:	Full length human recombinant protein of human USP38 (NP_115946) produced in HEK293T cell.
Formulation:	PBS (pH 7.3) containing 1% BSA, 50% glycerol and 0.02% sodium azide.
Concentration:	1 mg/ml
Purification:	Purified from mouse ascites fluids or tissue culture supernatant by affinity chromatography (protein A/G)
Conjugation:	Unconjugated
Storage:	Store at -20°C as received.
Stability:	Stable for 12 months from date of receipt.
Predicted Protein Size:	116.4 kDa
Gene Name:	ubiquitin specific peptidase 38
Database Link:	NP_115946 Entrez Gene 74841 Mouse Entrez Gene 307764 Rat Entrez Gene 476071 Dog Entrez Gene 84640 Human Q8NB14
Synonyms:	HP43.8KD
Protein Families:	Druggable Genome, Protease



[View online »](#)

Product images:


HEK293T cells were transfected with the pCMV6-ENTRY control (Cat# [PS100001], Left lane) or pCMV6-ENTRY USP38 (Cat# [RC208974], Right lane) cDNA for 48 hrs and lysed. Equivalent amounts of cell lysates (5 ug per lane) were separated by SDS-PAGE and immunoblotted with anti-USP38(Cat# [TA500312]). Positive lysates [LY410045] (100ug) and [LC410045] (20ug) can be purchased separately from OriGene.



Western blot analysis of extracts (35ug) from 9 different cell lines by using anti-USP38 monoclonal antibody.