

Product datasheet for **TA500312**

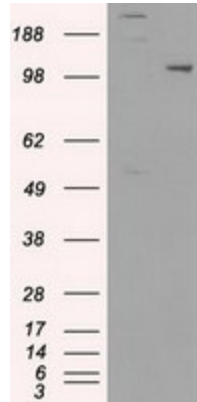
USP38 Mouse Monoclonal Antibody [Clone ID: OTI1D11]

Product data:

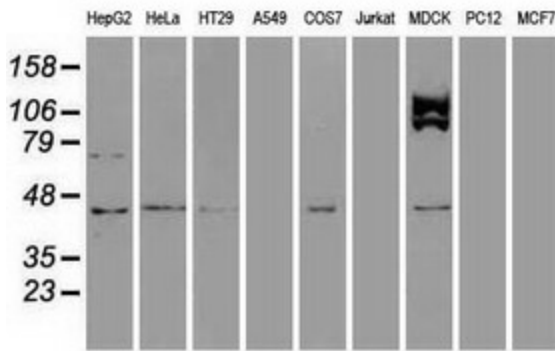
| | |
|-------------------------|--|
| Product Type: | Primary Antibodies |
| Clone Name: | OTI1D11 |
| Applications: | WB |
| Recommended Dilution: | WB 1:1000~2000 |
| Reactivity: | Human, Dog, Mouse, Rat |
| Host: | Mouse |
| Isotype: | IgM |
| Clonality: | Monoclonal |
| Immunogen: | Full length human recombinant protein of human USP38 (NP_115946) produced in HEK293T cell. |
| Formulation: | PBS (pH 7.3) containing 1% BSA, 50% glycerol and 0.02% sodium azide. |
| Concentration: | 1 mg/ml |
| Purification: | Purified from mouse ascites fluids or tissue culture supernatant by affinity chromatography (protein A/G) |
| Conjugation: | Unconjugated |
| Storage: | Store at -20°C as received. |
| Stability: | Stable for 12 months from date of receipt. |
| Predicted Protein Size: | 116.4 kDa |
| Gene Name: | ubiquitin specific peptidase 38 |
| Database Link: | NP_115946 Entrez Gene 74841 Mouse Entrez Gene 307764 Rat Entrez Gene 476071 Dog Entrez Gene 84640 Human Q8NB14 |
| Synonyms: | HP43.8KD |
| Protein Families: | Druggable Genome, Protease |



[View online »](#)

Product images:


HEK293T cells were transfected with the pCMV6-ENTRY control (Cat# [PS100001], Left lane) or pCMV6-ENTRY USP38 (Cat# [RC208974], Right lane) cDNA for 48 hrs and lysed. Equivalent amounts of cell lysates (5 ug per lane) were separated by SDS-PAGE and immunoblotted with anti-USP38(Cat# TA500312). Positive lysates [LY410045] (100ug) and [LC410045] (20ug) can be purchased separately from OriGene.



Western blot analysis of extracts (35ug) from 9 different cell lines by using anti-USP38 monoclonal antibody.