

Product datasheet for **TA500288S**

VEGFA Mouse Monoclonal Antibody [Clone ID: OTI2F7]

Product data:

Product Type:	Primary Antibodies
Clone Name:	OTI2F7
Applications:	WB
Recommended Dilution:	WB 1:1000, IHC 1:50
Reactivity:	Human
Host:	Mouse
Isotype:	IgG2b
Clonality:	Monoclonal
Immunogen:	Recombinant protein expressed in E.coli corresponding to amino acids 27-233 of human VEGF
Formulation:	PBS (pH 7.3) containing 1% BSA, 50% glycerol and 0.02% sodium azide.
Concentration:	0.8 mg/ml
Purification:	Purified from mouse ascites fluids or tissue culture supernatant by affinity chromatography (protein A/G)
Conjugation:	Unconjugated
Storage:	Store at -20°C as received.
Stability:	Stable for 12 months from date of receipt.
Predicted Protein Size:	23.8 kDa
Gene Name:	vascular endothelial growth factor A
Database Link:	NP_001020537 Entrez Gene 7422 Human P15692



[View online »](#)

Background:

VEGF is a member of the PDGF/VEGF growth factor family that is often found as a disulfide linked homodimer. It is a glycosylated mitogen that specifically acts on endothelial cells and has various effects, including mediating increased vascular permeability, inducing angiogenesis, vasculogenesis and endothelial cell growth, promoting cell migration, and inhibiting apoptosis. Elevated levels of this protein is linked to POEMS syndrome, also known as Crow-Fukase syndrome. Mutations in VEGF gene have been associated with proliferative and nonproliferative diabetic retinopathy.

Synonyms:

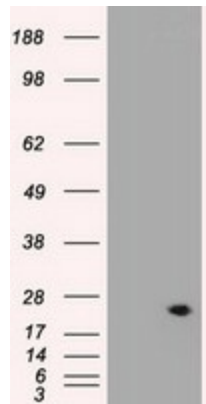
MVCD1; VEGF; VPF

Protein Families:

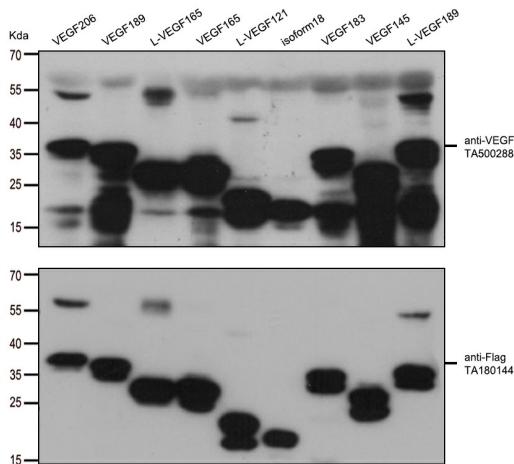
Druggable Genome, Secreted Protein

Protein Pathways:

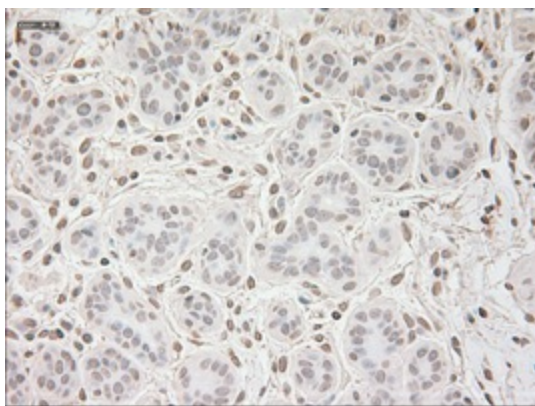
Bladder cancer, Cytokine-cytokine receptor interaction, Focal adhesion, mTOR signaling pathway, Pancreatic cancer, Pathways in cancer, Renal cell carcinoma, VEGF signaling pathway

Product images:


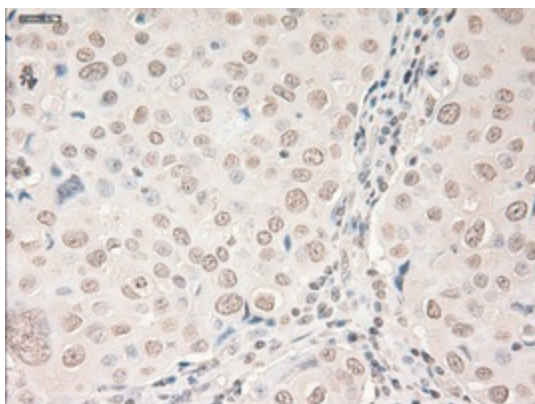
HEK293T cells were transfected with the pCMV6-ENTRY control (Left lane) or pCMV6-ENTRY VEGF ([RC223789], Right lane) cDNA for 48 hrs and lysed. Equivalent amounts of cell lysates (5 ug per lane) were separated by SDS-PAGE and immunoblotted with anti-VEGF.



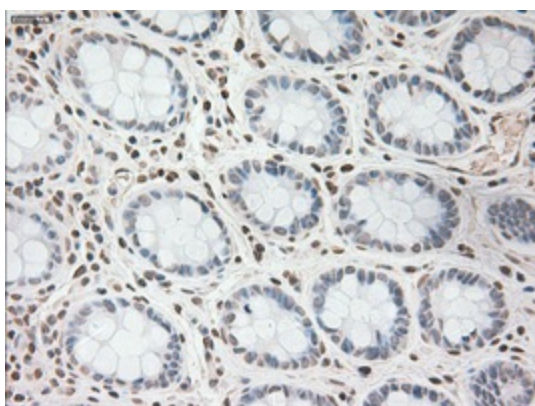
HEK293T cells were transfected with the overexpression plasmids of 9 VEGF isoforms (from left to right: VEGF206, [RC223789]; VEGF189, [RC229706]; L-VEGF165, [RC223884]; VEGF165, [RC229662]; L-VEGF121, [RC222129]; VEGF iso18, [RC229874]; VEGF183, [RC229686]; VEGF145, [RC231952]; L-VEGF189, [RC224244]) for 48 hrs and lysed. Equivalent amounts of cell lysates (5 ug per lane) were separated by SDS-PAGE and immunoblotted with anti-flag antibody ([TA180144], 1:1000) or anti-VEGFA mouse monoclonal antibody. ([TA500288], 1:500)



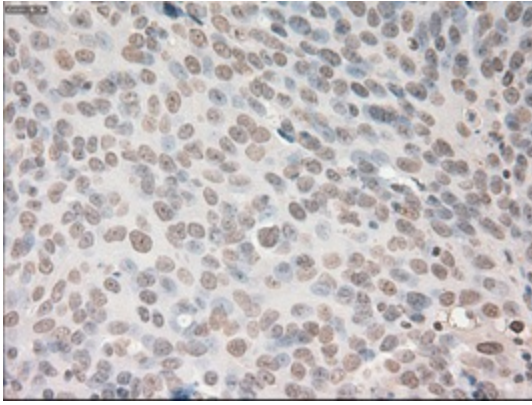
Immunohistochemical staining of paraffin-embedded breast tissue within the normal limits using anti-VEGF mouse monoclonal antibody. (Heat-induced epitope retrieval by 10mM citric buffer, pH6.0, 100°C for 10min, [TA500288], Dilution 1:50)



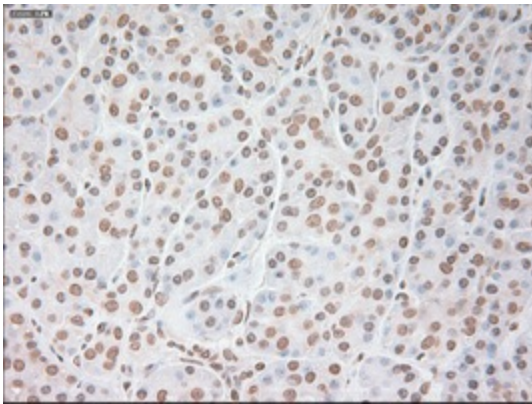
Immunohistochemical staining of paraffin-embedded Adenocarcinoma of breast tissue using anti-VEGF mouse monoclonal antibody. (Heat-induced epitope retrieval by 10mM citric buffer, pH6.0, 100°C for 10min, [TA500288], Dilution 1:50)



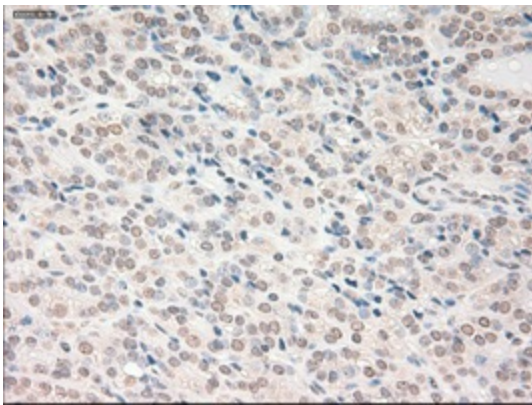
Immunohistochemical staining of paraffin-embedded colon tissue within the normal limits using anti-VEGF mouse monoclonal antibody. (Heat-induced epitope retrieval by 10mM citric buffer, pH6.0, 100°C for 10min, [TA500288], Dilution 1:50)



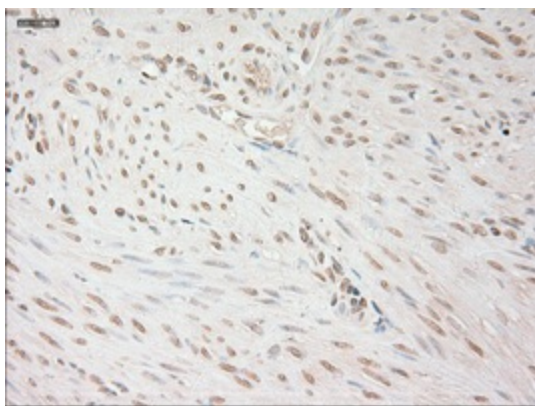
Immunohistochemical staining of paraffin-embedded Adenocarcinoma of ovary tissue using anti-VEGFmouse monoclonal antibody. (Heat-induced epitope retrieval by 10mM citric buffer, pH6.0, 100°C for 10min, [TA500288], Dilution 1:50)



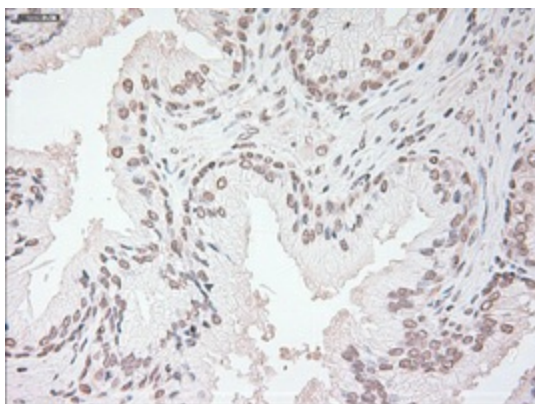
Immunohistochemical staining of paraffin-embedded pancreas tissue within the normal limits using anti-VEGFmouse monoclonal antibody. (Heat-induced epitope retrieval by 10mM citric buffer, pH6.0, 100°C for 10min, [TA500288], Dilution 1:50)



Immunohistochemical staining of paraffin-embedded Carcinoma of thyroid tissue using anti-VEGFmouse monoclonal antibody. (Heat-induced epitope retrieval by 10mM citric buffer, pH6.0, 100°C for 10min, [TA500288], Dilution 1:50)



Immunohistochemical staining of paraffin-embedded endometrium tissue within the normal limits using anti-VEGFmouse monoclonal antibody. (Heat-induced epitope retrieval by 10mM citric buffer, pH6.0, 100°C for 10min, [TA500288], Dilution 1:50)



Immunohistochemical staining of paraffin-embedded prostate tissue within the normal limits using anti-VEGFmouse monoclonal antibody. (Heat-induced epitope retrieval by 10mM citric buffer, pH6.0, 100°C for 10min, [TA500288], Dilution 1:50)