

## Product datasheet for **TA500281M**

### SOX17 Mouse Monoclonal Antibody [Clone ID: OTI2B6]

#### Product data:

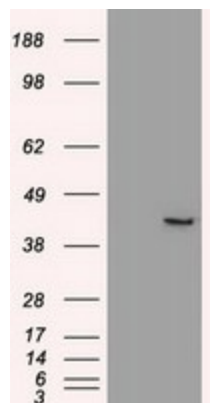
Product Type:	Primary Antibodies
Clone Name:	OTI2B6
Applications:	IF, IHC, WB
Recommended Dilution:	WB 1:1000; IHC 1:50
Reactivity:	Human, Dog, Mouse, Rat
Host:	Mouse
Isotype:	IgG2b
Clonality:	Monoclonal
Immunogen:	Recombinant protein expressed in E.coli corresponding to amino acids 177-414 of human SOX17
Formulation:	PBS (pH 7.3) containing 1% BSA, 50% glycerol and 0.02% sodium azide.
Concentration:	0.15 mg/ml
Purification:	Purified from mouse ascites fluids or tissue culture supernatant by affinity chromatography (protein A/G)
Conjugation:	Unconjugated
Storage:	Store at -20°C as received.
Stability:	Stable for 12 months from date of receipt.
Predicted Protein Size:	43.9 kDa
Gene Name:	SRY-box transcription factor 17
Database Link:	<a href="#">NP_071899</a> <a href="#">Entrez Gene 20671 Mouse</a> <a href="#">Entrez Gene 312936 Rat</a> <a href="#">Entrez Gene 486955 Dog</a> <a href="#">Entrez Gene 64321 Human</a> <a href="#">Q9H6I2</a>
Background:	SOX17 is a member of the SOX (SRY-related HMG-box) family of transcription factors involved in the regulation of embryonic development and in the determination of the cell fate. It may act as a transcriptional regulator after forming a protein complex with other proteins
Synonyms:	VUR3


[View online »](#)

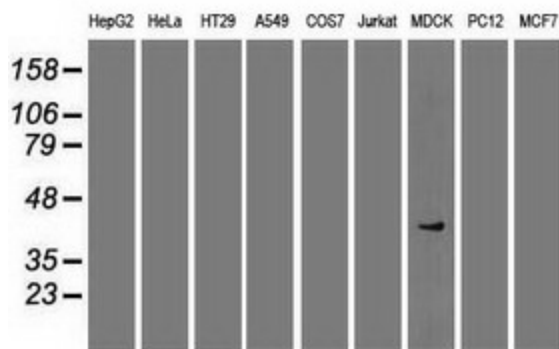
**Protein Families:** Transcription Factors

**Protein Pathways:** Wnt signaling pathway

**Product images:**



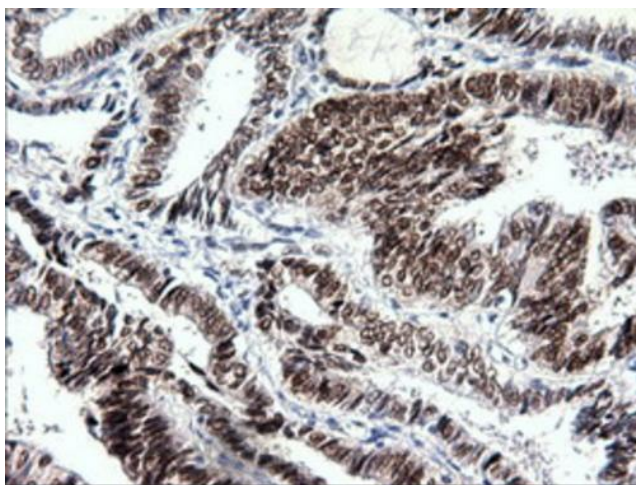
HEK293T cells were transfected with the pCMV6-ENTRY control (Left lane) or pCMV6-ENTRY SOX17 ([RC220888], Right lane) cDNA for 48 hrs and lysed. Equivalent amounts of cell lysates (5 ug per lane) were separated by SDS-PAGE and immunoblotted with anti-SOX17. Positive lysates [LY411669] (100ug) and [LC411669] (20ug) can be purchased separately from OriGene.



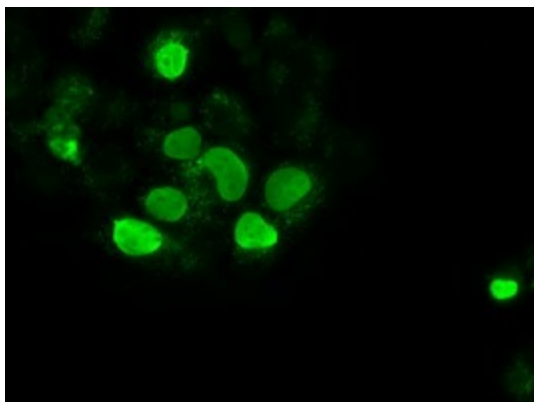
Western blot analysis of extracts (35ug) from 9 different cell lines by using anti-SOX17 monoclonal antibody.



Immunohistochemical staining of paraffin-embedded Human endometrium tissue within the normal limits using anti-SOX17 mouse monoclonal antibody. ([TA500281]). Dilution Factor: 1:50; heat-induced epitope retrieval by 10mM citric buffer, pH6.0, 100°C for 10min. Heat-induced epitope retrieval by EDTA solution buffer pH 8.0 at 120°C for 3 min.



Immunohistochemical staining of paraffin-embedded Adenocarcinoma of Human endometrium tissue using anti-SOX17 mouse monoclonal antibody. ([TA500281]). Dilution Factor: 1:50; heat-induced epitope retrieval by 10mM citric buffer, pH6.0, 100°C for 10min. Heat-induced epitope retrieval by EDTA solution buffer pH 8.0 at 120°C for 3 min.



Anti-SOX17 mouse monoclonal antibody ([TA500281]) immunofluorescent staining of COS7 cells transiently transfected by pCMV6-ENTRY SOX17 ([RC220888]).