

Product datasheet for **TA500245BM**

FOXA1 Mouse Monoclonal Antibody (HRP conjugated) [Clone ID: OTI3A8]

Product data:

Product Type:	Primary Antibodies
Clone Name:	OTI3A8
Applications:	IF, WB
Recommended Dilution:	WB 1:1000
Reactivity:	Human, Dog, Mouse, Rat
Host:	Mouse
Isotype:	IgG2b
Clonality:	Monoclonal
Immunogen:	Recombinant protein expressed in E.coli corresponding to amino acids 1-473 of human FOXA1
Formulation:	PBS (pH 7.3) containing 1% BSA, 50% glycerol.
Concentration:	0.5 mg/ml
Purification:	Purified from mouse ascites fluids or tissue culture supernatant by affinity chromatography (protein A/G)
Conjugation:	HRP
Storage:	Store at -20°C as received.
Stability:	Stable for 12 months from date of receipt.
Predicted Protein Size:	49 kDa
Gene Name:	forkhead box A1
Database Link:	NP_004487 Entrez Gene 15375 Mouse Entrez Gene 25098 Rat Entrez Gene 490657 Dog Entrez Gene 3169 Human P55317
Background:	FOXA1 is a member of the forkhead class of DNA-binding proteins. These hepatocyte nuclear factors are transcriptional activators for liver-specific transcripts such as albumin and transthyretin, and they also interact with chromatin. Similar family members in mice have roles in the regulation of metabolism and in the differentiation of the pancreas and liver

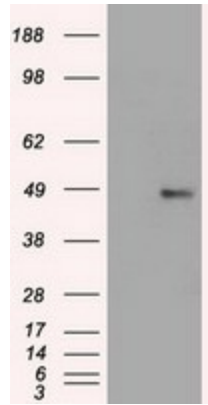


[View online »](#)

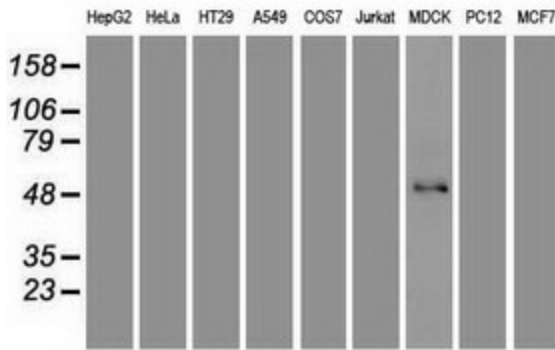
Synonyms: HNF3A; TCF3A

Protein Families: ES Cell Differentiation/IPS, Transcription Factors

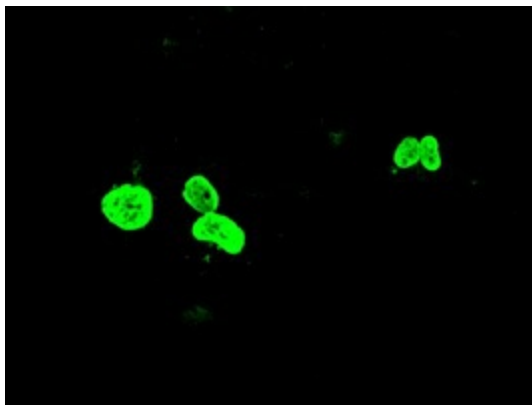
Product images:



HEK293T cells were transfected with the pCMV6-ENTRY control (Left lane) or pCMV6-ENTRY FOXA1 ([RC206045], Right lane) cDNA for 48 hrs and lysed. Equivalent amounts of cell lysates (5 ug per lane) were separated by SDS-PAGE and immunoblotted with anti-FOXA1. Positive lysates [LY401427] (100ug) and [LC401427] (20ug) can be purchased separately from OriGene.



Western blot analysis of extracts (35ug) from 9 different cell lines by using anti-FOXA1 monoclonal antibody.



Anti-FOXA1 mouse monoclonal antibody ([TA500245]) immunofluorescent staining of COS7 cells transiently transfected by pCMV6-ENTRY FOXA1 ([RC206045]).