

## Product datasheet for **TA500244BM**

### **CYP7B1 Mouse Monoclonal Antibody (HRP conjugated) [Clone ID: OTI7H10]**

#### **Product data:**

Product Type:	Primary Antibodies
Clone Name:	OTI7H10
Applications:	WB
Recommended Dilution:	WB 1:1000
Reactivity:	Human
Host:	Mouse
Isotype:	IgG2b
Clonality:	Monoclonal
Immunogen:	Recombinant protein expressed in E.coli corresponding to amino acids 350-506 of human Cyp7b1
Formulation:	PBS (pH 7.3) containing 1% BSA, 50% glycerol.
Concentration:	0.5 mg/ml
Purification:	Purified from mouse ascites fluids or tissue culture supernatant by affinity chromatography (protein A/G)
Conjugation:	HRP
Storage:	Store at -20°C as received.
Stability:	Stable for 12 months from date of receipt.
Predicted Protein Size:	58.1 kDa
Gene Name:	cytochrome P450 family 7 subfamily B member 1
Database Link:	<a href="#">NP_004811</a> <a href="#">Entrez Gene 9420 Human</a> <a href="#">O75881</a>



[View online »](#)

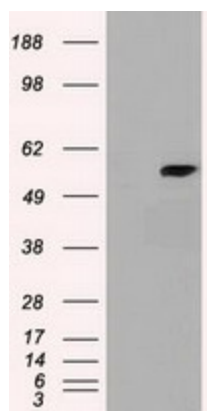
**Background:** Cyp7b1 is a member of the cytochrome P450 superfamily of enzymes. The cytochrome P450 proteins are monooxygenases which catalyze many reactions involved in drug metabolism and synthesis of cholesterol, steroids and other lipids. This endoplasmic reticulum membrane protein catalyzes the first reaction in the cholesterol catabolic pathway of extrahepatic tissues, which converts cholesterol to bile acids. This enzyme likely plays a minor role in total bile acid synthesis, but may also be involved in the development of atherosclerosis, neurosteroid metabolism and sex hormone synthesis

**Synonyms:** CBAS3; CP7B; SPG5A

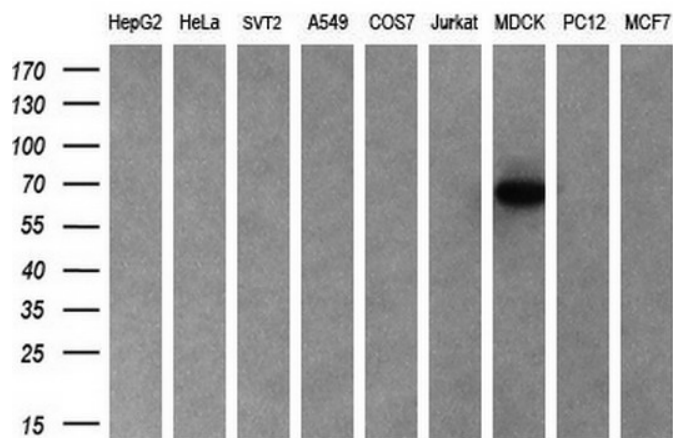
**Protein Families:** Druggable Genome, P450, Transmembrane

**Protein Pathways:** Primary bile acid biosynthesis

**Product images:**



HEK293T cells were transfected with the pCMV6-ENTRY control (Cat# [PS100001], Left lane) or pCMV6-ENTRY cyp7b1 (Cat# [RC222647], Right lane) cDNA for 48 hrs and lysed. Equivalent amounts of cell lysates (5 ug per lane) were separated by SDS-PAGE and immunoblotted with anti-cyp7b1 (Cat# [TA500244]). Positive lysates [LY417726] (100ug) and [LC417726] (20ug) can be purchased separately from OriGene.



Western blot analysis of extracts (35ug) from 9 different cell lines by using anti-cyp7b1 monoclonal antibody (HepG2: human; HeLa: human; SVT2: mouse; A549: human; COS7: monkey; Jurkat: human; MDCK: canine; PC12: rat; MCF7: human) (1:200).