

Product datasheet for **TA500216BM**

Cytokeratin 8 (KRT8) Mouse Monoclonal Antibody (HRP conjugated) [Clone ID: OTI4D12]

Product data:

Product Type:	Primary Antibodies
Clone Name:	OTI4D12
Applications:	IF, IHC, WB
Recommended Dilution:	WB 1:500~1000, IHC 1:50, IF 1:100
Reactivity:	Human, Dog, Monkey, Mouse, Rat
Host:	Mouse
Isotype:	IgG2a
Clonality:	Monoclonal
Immunogen:	Human recombinant protein fragment corresponding to amino acids 91-381 of human CK8 (NP_002264) produced in E.coli.
Formulation:	PBS (pH 7.3) containing 1% BSA, 50% glycerol.
Concentration:	0.5 mg/ml
Purification:	Purified from mouse ascites fluids or tissue culture supernatant by affinity chromatography (protein A/G)
Conjugation:	HRP
Storage:	Store at -20°C as received.
Stability:	Stable for 12 months from date of receipt.
Predicted Protein Size:	53.5 kDa
Gene Name:	keratin 8
Database Link:	NP_002264 Entrez Gene 16691 Mouse Entrez Gene 25626 Rat Entrez Gene 486513 Dog Entrez Gene 3856 Human P05787



[View online »](#)

Background:

Keratin 8 is a member of the type II keratin family clustered on the long arm of chromosome 12. Type I and type II keratins heteropolymerize to form intermediate-sized filaments in the cytoplasm of epithelial cells. The product of this gene typically dimerizes with keratin 18 to form an intermediate filament in simple single-layered epithelial cells. This protein plays a role in maintaining cellular structural integrity and also functions in signal transduction and cellular differentiation. Mutations in this gene cause cryptogenic cirrhosis.

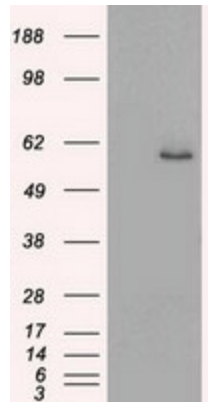
Synonyms:

CARD2; CK-8; CK8; CYK8; K2C8; K8; KO

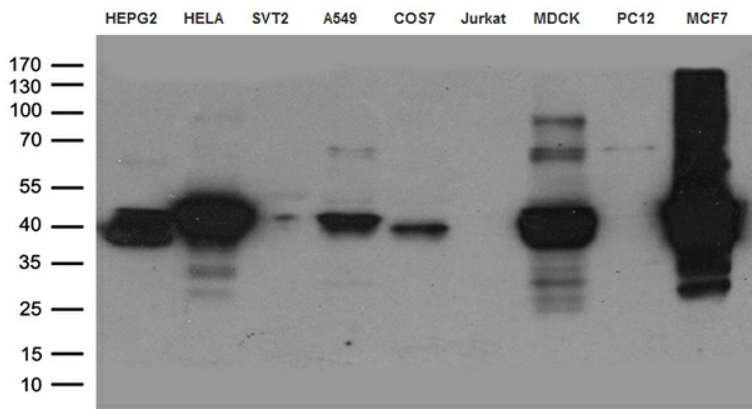
Protein Families:

Druggable Genome

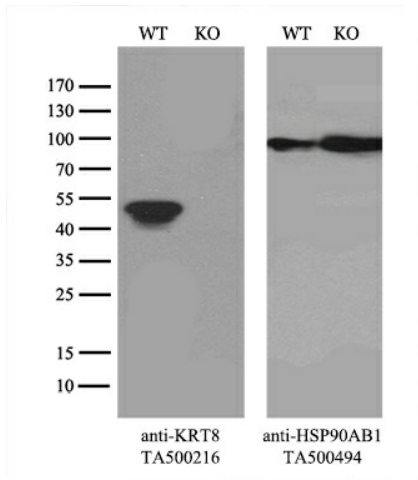
Product images:



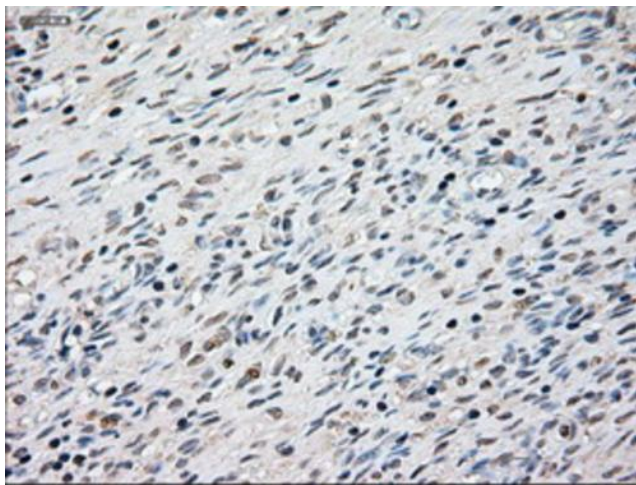
HEK293T cells were transfected with the pCMV6-ENTRY control (Left lane) or pCMV6-ENTRY KRT8 ([RC209570], Right lane) cDNA for 48 hrs and lysed. Equivalent amounts of cell lysates (5 ug per lane) were separated by SDS-PAGE and immunoblotted with anti-KRT8. Positive lysates [LY419425] (100ug) and [LC419425] (20ug) can be purchased separately from OriGene.



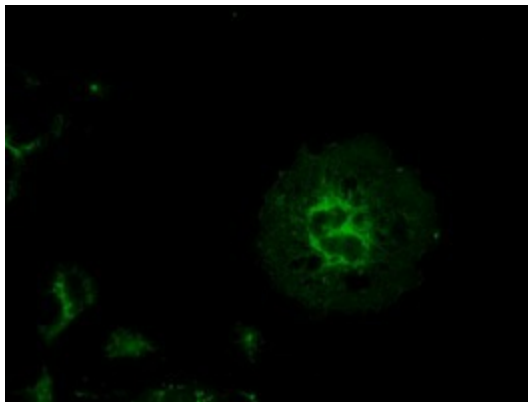
Western blot analysis of extracts (35ug) from 9 different cell lines by using anti-KRT8 monoclonal antibody (HepG2: human; HeLa: human; SVT2: mouse; A549: human; COS7: monkey; Jurkat: human; MDCK: canine; PC12: rat; MCF7: human).



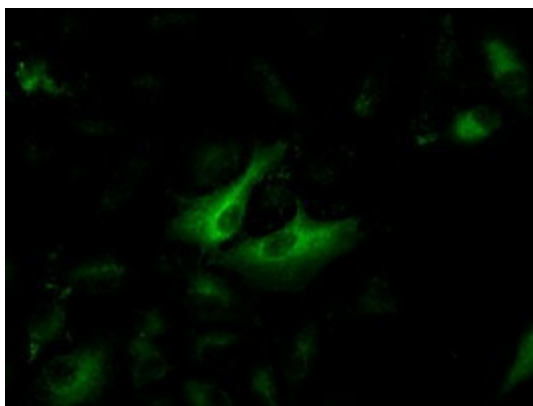
Equivalent amounts of cell lysates (10 ug per lane) of wild-type HeLa cells (WT, Cat# LC810HELA) and KRT8-Knockout HeLa cells (KO, Cat# [LC810123]) were separated by SDS-PAGE and immunoblotted with anti-KRT8 monoclonal antibody [TA500216], (1:1000). Then the blotted membrane was stripped and reprobed with anti-HSP90AB1 antibody ([TA500494]) as a loading control.



Immunohistochemical staining of paraffin-embedded Human Ovary tissue within the normal limits using anti-KRT8 mouse monoclonal antibody. (Heat-induced epitope retrieval by 10mM citric buffer, pH6.0, 100°C for 10min, [TA500216])



Anti-KRT8 mouse monoclonal antibody ([TA500216]) immunofluorescent staining of COS7 cells transiently transfected by pCMV6-ENTRY KRT8 ([RC209570]).



Immunofluorescent staining of A549 cells using anti-KRT8 mouse monoclonal antibody ([TA500216]).