

Product datasheet for **TA500199AM**

ID2 Mouse Monoclonal Antibody (Biotin conjugated) [Clone ID: OTI9A8]

Product data:

Product Type:	Primary Antibodies
Clone Name:	OTI9A8
Applications:	IF, IHC, WB
Recommended Dilution:	WB 1:500, IHC 1:50, IF 1:100
Reactivity:	Human, Mouse, Rat
Host:	Mouse
Isotype:	IgG1
Clonality:	Monoclonal
Immunogen:	Full length human recombinant protein of human ID2 (NP_002157) produced in E.coli.
Formulation:	PBS (pH 7.3) containing 1% BSA, 50% glycerol and 0.02% sodium azide.
Concentration:	0.5 mg/ml
Purification:	Purified from mouse ascites fluids or tissue culture supernatant by affinity chromatography (protein A/G)
Conjugation:	Biotin
Storage:	Store at -20°C as received.
Stability:	Stable for 12 months from date of receipt.
Predicted Protein Size:	14.7 kDa
Gene Name:	inhibitor of DNA binding 2
Database Link:	NP_002157 Entrez Gene 15902 Mouse Entrez Gene 25587 Rat Entrez Gene 3398 Human Q02363

Background: The protein encoded by this gene belongs to the inhibitor of DNA binding (ID) family, members of which are transcriptional regulators that contain a helix-loop-helix (HLH) domain but not a basic domain. Members of the ID family inhibit the functions of basic helix-loop-helix transcription factors in a dominant-negative manner by suppressing their heterodimerization partners through the HLH domains. This protein may play a role in negatively regulating cell differentiation. A pseudogene has been identified for this gene.



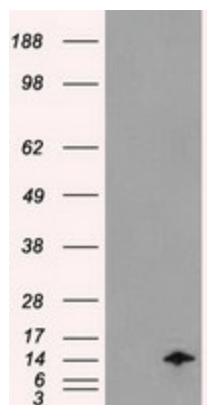
[View online »](#)

Synonyms: bHLHb26; GIG8; ID2A; ID2H

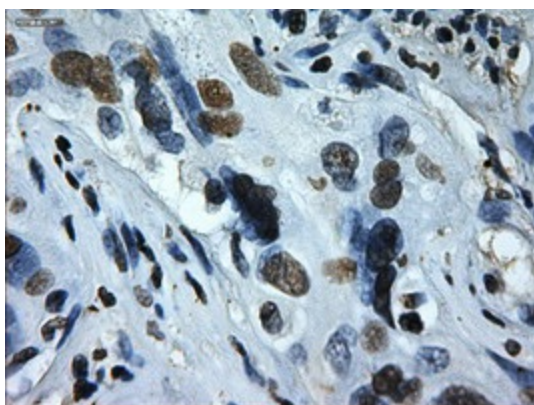
Protein Families: ES Cell Differentiation/IPS, Stem cell relevant signaling - TGFb/BMP signaling pathway, Transcription Factors

Protein Pathways: TGF-beta signaling pathway

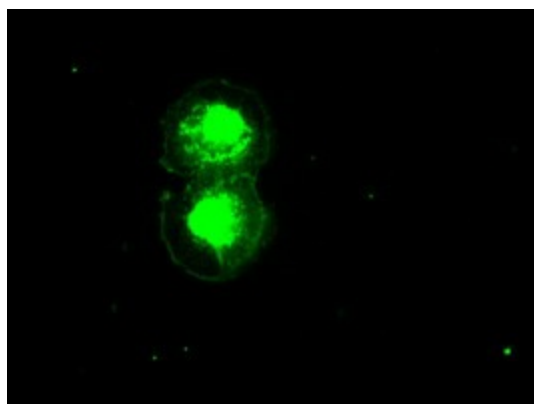
Product images:



HEK293T cells were transfected with the pCMV6-ENTRY control (Left lane) or pCMV6-ENTRY ID2 ([RC205324], Right lane) cDNA for 48 hrs and lysed. Equivalent amounts of cell lysates (5 ug per lane) were separated by SDS-PAGE and immunoblotted with anti-ID2. Positive lysates [LY400786] (100ug) and [LC400786] (20ug) can be purchased separately from OriGene.



Immunohistochemical staining of paraffin-embedded Carcinoma of Human liver tissue using anti-ID2 mouse monoclonal antibody. (Heat-induced epitope retrieval by 10mM citric buffer, pH6.0, 100°C for 10min, [TA500199])



Anti-ID2 mouse monoclonal antibody ([TA500199]) immunofluorescent staining of COS7 cells transiently transfected by pCMV6-ENTRY ID2 ([RC205324]).