

## Product datasheet for **TA500196BM**

### **HNF6 (ONECUT1) Mouse Monoclonal Antibody (HRP conjugated) [Clone ID: OTI4F12]**

#### **Product data:**

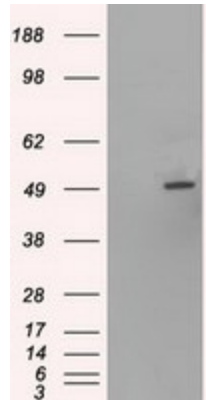
<b>Product Type:</b>	Primary Antibodies
<b>Clone Name:</b>	OTI4F12
<b>Applications:</b>	IF, IHC, WB
<b>Recommended Dilution:</b>	WB 1:500, IHC 1:50, IF 1:100
<b>Reactivity:</b>	Human, Mouse, Rat
<b>Host:</b>	Mouse
<b>Isotype:</b>	IgG1
<b>Clonality:</b>	Monoclonal
<b>Immunogen:</b>	Human recombinant protein fragment corresponding to amino acids 85-198 of human HNF6 (NP_004489) produced in E.coli.
<b>Formulation:</b>	PBS (pH 7.3) containing 1% BSA, 50% glycerol.
<b>Concentration:</b>	0.5 mg/ml
<b>Purification:</b>	Purified from mouse ascites fluids or tissue culture supernatant by affinity chromatography (protein A/G)
<b>Conjugation:</b>	HRP
<b>Storage:</b>	Store at -20°C as received.
<b>Stability:</b>	Stable for 12 months from date of receipt.
<b>Predicted Protein Size:</b>	50.8 kDa
<b>Gene Name:</b>	one cut homeobox 1
<b>Database Link:</b>	<a href="#">NP_004489</a> <a href="#">Entrez Gene 15379 Mouse</a> <a href="#">Entrez Gene 25231 Rat</a> <a href="#">Entrez Gene 3175 Human</a> <a href="#">Q9UBC0</a>
<b>Background:</b>	The protein encoded by HNF6 is Transcriptional activator. Binds the consensus sequence 5'-DHWATTGAYTWWD-3' on a variety of gene promoters such as those of HNF3B and TTR. Important for liver genes transcription.
<b>Synonyms:</b>	HNF-6; HNF6; HNF6A
<b>Protein Families:</b>	ES Cell Differentiation/IPS, Transcription Factors



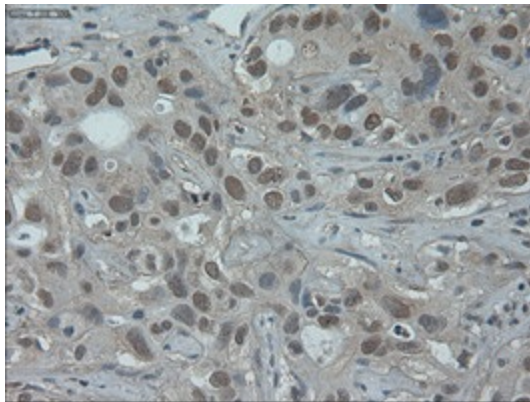
[View online »](#)

Protein Pathways: Maturity onset diabetes of the young

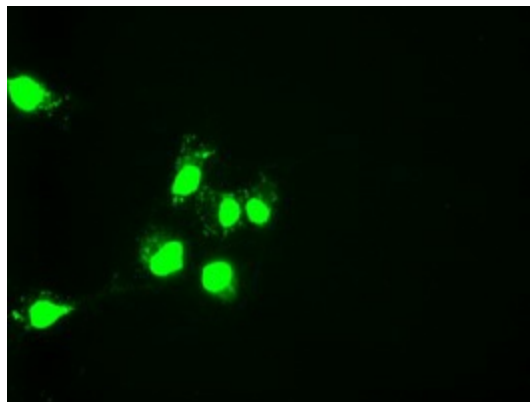
**Product images:**



HEK293T cells were transfected with the pCMV6-ENTRY control (Cat# [PS100001], Left lane) or pCMV6-ENTRY HNF6 (Cat# [RC218219], Right lane) cDNA for 48 hrs and lysed. Equivalent amounts of cell lysates (5 ug per lane) were separated by SDS-PAGE and immunoblotted with anti-HNF6(Cat# [TA500196]). Positive lysates [LY401429] (100ug) and [LC401429] (20ug) can be purchased separately from OriGene.



Immunohistochemical staining of paraffin-embedded Carcinoma of Human liver tissue using anti-HNF6 mouse monoclonal antibody. (Heat-induced epitope retrieval by 10mM citric buffer, pH6.0, 100°C for 10min, [TA500196])



Anti-HNF6 mouse monoclonal antibody ([TA500196]) immunofluorescent staining of COS7 cells transiently transfected by pCMV6-ENTRY HNF6 ([RC218219]).