

## Product datasheet for **TA500186S**

### **GATA6 Mouse Monoclonal Antibody [Clone ID: OTI2B3]**

#### **Product data:**

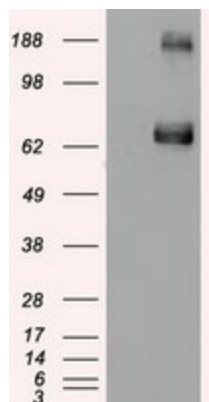
<b>Product Type:</b>	Primary Antibodies
<b>Clone Name:</b>	OTI2B3
<b>Applications:</b>	IF, IHC, WB
<b>Recommended Dilution:</b>	WB 1:500, IHC 1:50, IF 1:50~100
<b>Reactivity:</b>	Human, Mouse, Rat
<b>Host:</b>	Mouse
<b>Isotype:</b>	IgG2a
<b>Clonality:</b>	Monoclonal
<b>Immunogen:</b>	Human recombinant protein fragment corresponding to amino acids 300-449 of human GATA6 (NP_005248) produced in E.coli.
<b>Formulation:</b>	PBS (pH 7.3) containing 1% BSA, 50% glycerol and 0.02% sodium azide.
<b>Concentration:</b>	0.3 mg/ml
<b>Purification:</b>	Purified from mouse ascites fluids or tissue culture supernatant by affinity chromatography (protein A/G)
<b>Conjugation:</b>	Unconjugated
<b>Storage:</b>	Store at -20°C as received.
<b>Stability:</b>	Stable for 12 months from date of receipt.
<b>Predicted Protein Size:</b>	59.9 kDa
<b>Gene Name:</b>	GATA binding protein 6
<b>Database Link:</b>	<a href="#">NP_005248</a> <a href="#">Entrez Gene 14465 Mouse</a> <a href="#">Entrez Gene 29300 Rat</a> <a href="#">Entrez Gene 2627 Human</a> <a href="#">Q92908</a>
<b>Background:</b>	The GATA family of transcription factors, which contain zinc fingers in their DNA binding domain, have emerged as candidate regulators of gene expression in hematopoietic cells (Tsai et al., 1994 [PubMed 8078582]). GATA6 Thought to be important for regulating terminal differentiation and/or proliferation.
<b>Synonyms:</b>	GATA-binding protein 6; GATA binding protein 6; transcription factor GATA-6



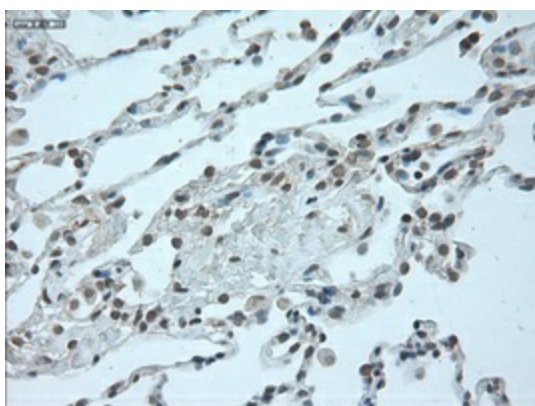
[View online »](#)

**Protein Families:** Embryonic stem cells, ES Cell Differentiation/IPS, Transcription Factors

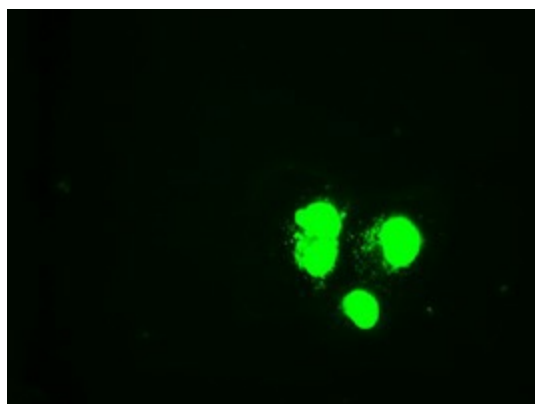
**Product images:**



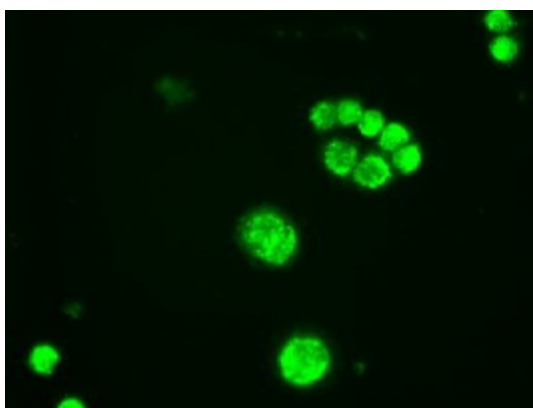
HEK293T cells were transfected with the pCMV6-ENTRY control (Cat# [PS100001], Left lane) or pCMV6-ENTRY GATA6 (Cat# [RC220721], Right lane) cDNA for 48 hrs and lysed. Equivalent amounts of cell lysates (5 ug per lane) were separated by SDS-PAGE and immunoblotted with anti-GATA6(Cat# [TA500186]). Positive lysates [LY401617] (100ug) and [LC401617] (20ug) can be purchased separately from OriGene.



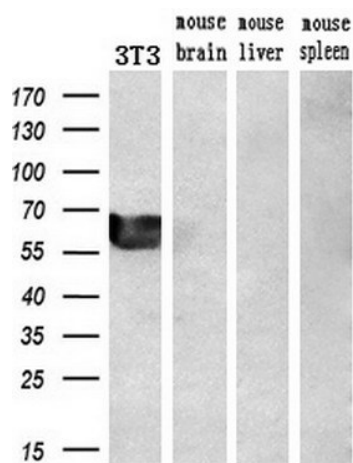
Immunohistochemical staining of paraffin-embedded Human lung tissue within the normal limits using anti-GATA6 mouse monoclonal antibody. (Heat-induced epitope retrieval by 10mM citric buffer, pH6.0, 100°C for 10min, [TA500186])



Anti-GATA6 mouse monoclonal antibody ([TA500186]) immunofluorescent staining of COS7 cells transiently transfected by pCMV6-ENTRY GATA6 ([RC220721]).



Immunofluorescent staining of HT29 cells using anti-GATA6 mouse monoclonal antibody (TA500186).



Western blot analysis of extracts (10ug) from a mouse cell line and 3 different mouse tissues by using anti-GATA6 monoclonal antibody (1:200).