

## Product datasheet for **TA500182AM**

### IL3 Mouse Monoclonal Antibody (Biotin conjugated) [Clone ID: OTI3B11]

#### Product data:

|                         |  |
|-------------------------|--|
| Product Type:           | Primary Antibodies   |
| Clone Name:             | OTI3B11  |
| Applications:           | IF, IHC, WB  |
| Recommended Dilution:   | WB 1:500, IHC 1:50, IF 1:100   |
| Reactivity:             | Human  |
| Host:                   | Mouse  |
| Isotype:                | IgG1   |
| Clonality:              | Monoclonal   |
| Immunogen:              | Human recombinant protein fragment corresponding to amino acids 20-152 of human IL-3 (NP_000579) produced in E.coli.   |
| Formulation:            | PBS (pH 7.3) containing 1% BSA, 50% glycerol and 0.02% sodium azide.   |
| Concentration:          | 0.5 mg/ml  |
| Purification:           | Purified from mouse ascites fluids or tissue culture supernatant by affinity chromatography (protein A/G)  |
| Conjugation:            | Biotin   |
| Storage:                | Store at -20°C as received.  |
| Stability:              | Stable for 12 months from date of receipt.   |
| Predicted Protein Size: | 15.0 kDa   |
| Gene Name:              | interleukin 3  |
| Database Link:          | <a href="#">NP_000579</a><br><a href="#">Entrez Gene 3562 Human</a><br><a href="#">P08700</a>  |
| Background:             | The protein encoded by IL-3 is a potent growth promoting cytokine. This cytokine is capable of supporting the proliferation of a broad range of hematopoietic cell types. It is involved in a variety of cell activities such as cell growth, differentiation and apoptosis. This cytokine has been shown to also possess neurotrophic activity, and it may be associated with neurologic disorders. |



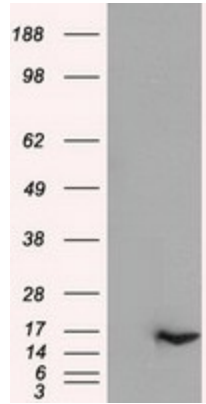
[View online »](#)

**Synonyms:** IL-3; MCGF; MULTI-CSF

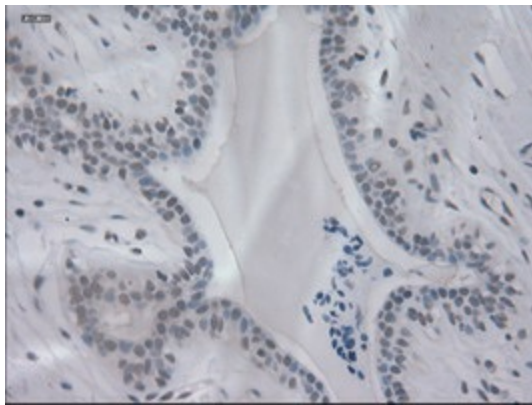
**Protein Families:** Druggable Genome, Secreted Protein

**Protein Pathways:** Apoptosis, Asthma, Cytokine-cytokine receptor interaction, Fc epsilon RI signaling pathway, Hematopoietic cell lineage, Jak-STAT signaling pathway

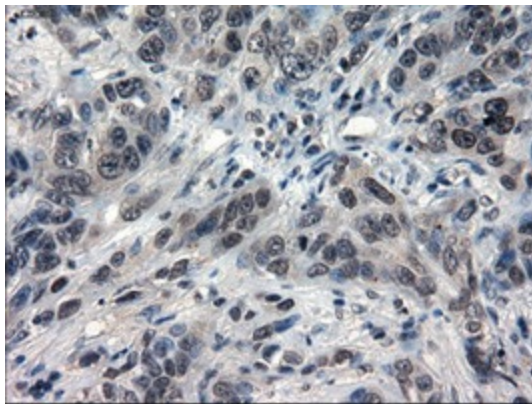
**Product images:**



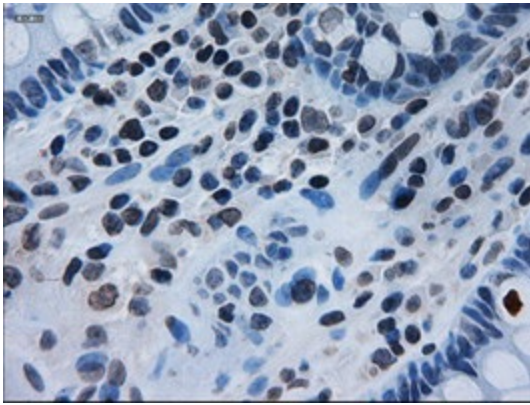
HEK293T cells were transfected with the pCMV6-ENTRY control (Cat# [PS100001], Left lane) or pCMV6-ENTRY IL-3 (Cat# [RC210109], Right lane) cDNA for 48 hrs and lysed. Equivalent amounts of cell lysates (5 ug per lane) were separated by SDS-PAGE and immunoblotted with anti-IL-3 (Cat# [TA500182]). Positive lysates [LY424621] (100ug) and [LC424621] (20ug) can be purchased separately from OriGene.



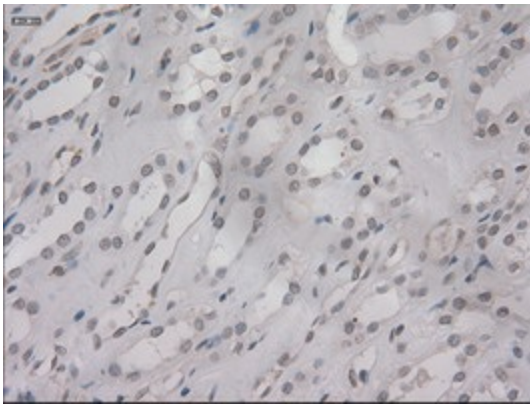
Immunohistochemical staining of paraffin-embedded Human breast tissue within the normal limits using anti-IL-3 mouse monoclonal antibody. (Heat-induced epitope retrieval by 10mM citric buffer, pH6.0, 100°C for 10min, [TA500182])



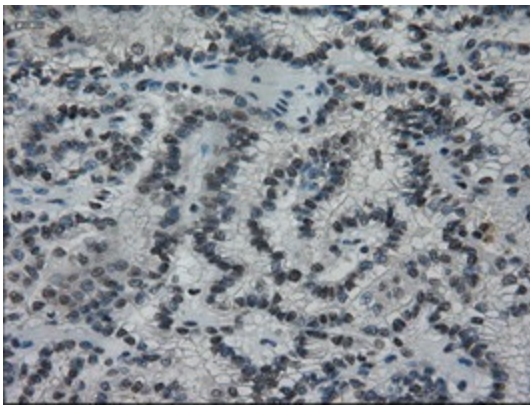
Immunohistochemical staining of paraffin-embedded Adenocarcinoma of Human breast tissue using anti-IL-3 mouse monoclonal antibody. (Heat-induced epitope retrieval by 10mM citric buffer, pH6.0, 100°C for 10min, [TA500182])



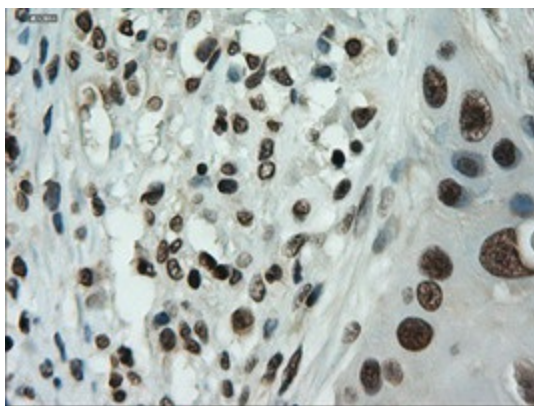
Immunohistochemical staining of paraffin-embedded Human colon tissue within the normal limits using anti-IL-3 mouse monoclonal antibody. (Heat-induced epitope retrieval by 10mM citric buffer, pH6.0, 100°C for 10min, [TA500182])



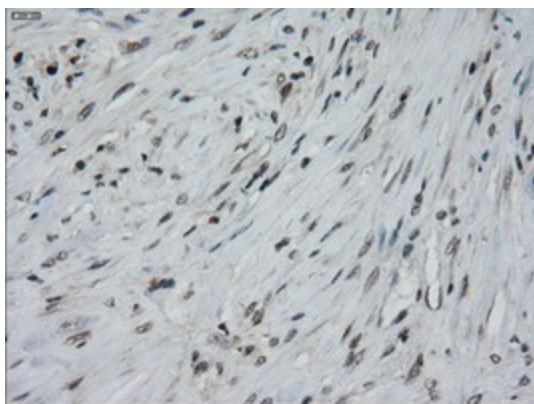
Immunohistochemical staining of paraffin-embedded Human Kidney tissue within the normal limits using anti-IL-3 mouse monoclonal antibody. (Heat-induced epitope retrieval by 10mM citric buffer, pH6.0, 100°C for 10min, [TA500182])



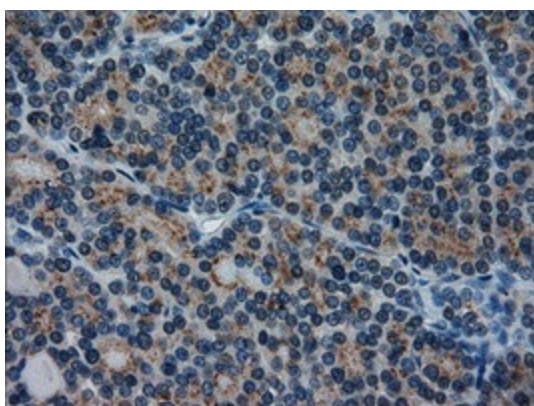
Immunohistochemical staining of paraffin-embedded Carcinoma of Human kidney tissue using anti-IL-3 mouse monoclonal antibody. (Heat-induced epitope retrieval by 10mM citric buffer, pH6.0, 100°C for 10min, [TA500182])



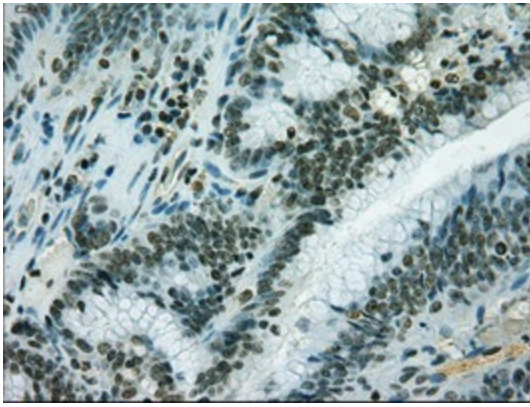
Immunohistochemical staining of paraffin-embedded Carcinoma of Human lung tissue using anti-IL-3 mouse monoclonal antibody. (Heat-induced epitope retrieval by 10mM citric buffer, pH6.0, 100°C for 10min, [TA500182])



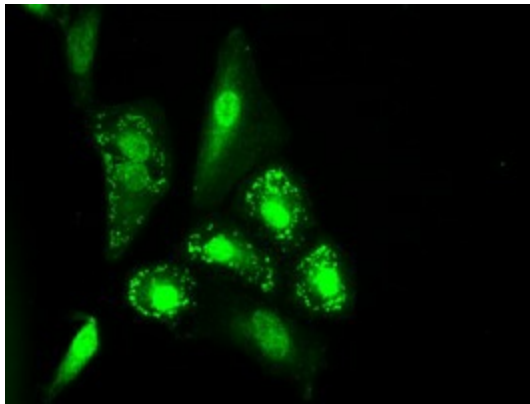
Immunohistochemical staining of paraffin-embedded Carcinoma of Human pancreas tissue using anti-IL-3 mouse monoclonal antibody. (Heat-induced epitope retrieval by 10mM citric buffer, pH6.0, 100°C for 10min, [TA500182])



Immunohistochemical staining of paraffin-embedded Carcinoma of Human thyroid tissue using anti-IL-3 mouse monoclonal antibody. (Heat-induced epitope retrieval by 10mM citric buffer, pH6.0, 100°C for 10min, [TA500182])



Immunohistochemical staining of paraffin-embedded Adenocarcinoma of Human endometrium tissue using anti-IL-3 mouse monoclonal antibody. (Heat-induced epitope retrieval by 10mM citric buffer, pH6.0, 100°C for 10min, [TA500182])



Immunofluorescent staining of A549 cells using anti-IL-3 mouse monoclonal antibody ([TA500182]).