

Product datasheet for **TA500170BM**

Carboxypeptidase A (CPA1) Mouse Monoclonal Antibody (HRP conjugated) [Clone ID: OTI4F1]

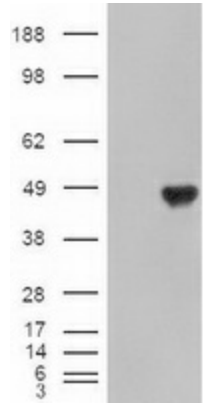
Product data:

Product Type:	Primary Antibodies
Clone Name:	OTI4F1
Applications:	IHC, WB
Recommended Dilution:	WB: 1:500, IHC 1:50
Reactivity:	Human
Host:	Mouse
Isotype:	IgG1
Clonality:	Monoclonal
Immunogen:	Recombinant protein expressed in E.coli corresponding to amino acids 1-419 of human CPA1
Formulation:	PBS (pH 7.3) containing 1% BSA, 50% glycerol.
Concentration:	0.5 mg/ml
Purification:	Purified from mouse ascites fluids or tissue culture supernatant by affinity chromatography (protein A/G)
Conjugation:	HRP
Storage:	Store at -20°C as received.
Stability:	Stable for 12 months from date of receipt.
Predicted Protein Size:	47.2 kDa
Gene Name:	carboxypeptidase A1
Database Link:	NP_001859 Entrez Gene 1357 Human P15085
Background:	Three different forms of human pancreatic procarboxypeptidase A have been isolated. The A1 and A2 forms are monomeric proteins with different biochemical properties. Carboxypeptidase A1 is a monomeric pancreatic exopeptidase. It is involved in zymogen inhibition.
Synonyms:	CPA
Protein Families:	Druggable Genome, ES Cell Differentiation/IPS, Protease, Secreted Protein

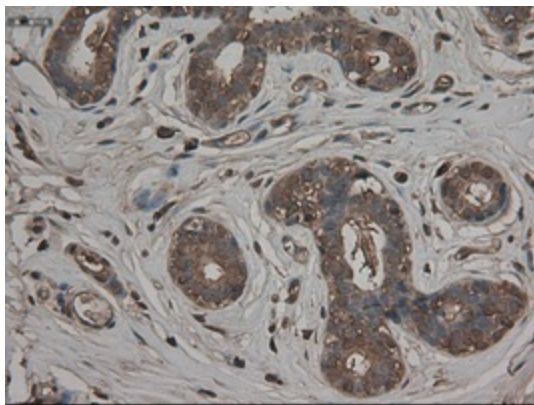


[View online »](#)

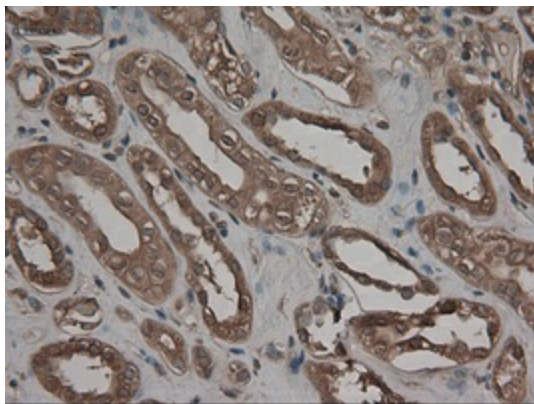
Product images:



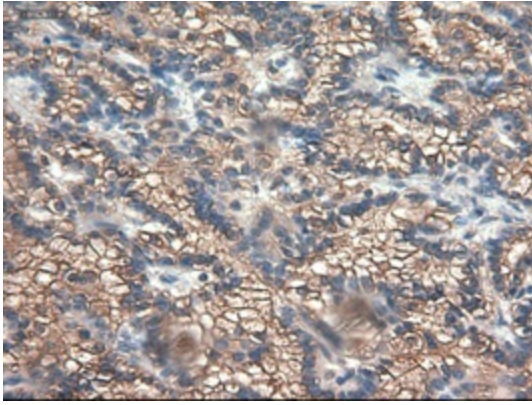
HEK293T cells were transfected with the pCMV6-ENTRY control (Left lane) or pCMV6-ENTRY CPA1 ([RC202720], Right lane) cDNA for 48 hrs and lysed. Equivalent amounts of cell lysates (5 ug per lane) were separated by SDS-PAGE and immunoblotted with anti-CPA1. Positive lysates [LY419696] (100ug) and [LC419696] (20ug) can be purchased separately from OriGene.



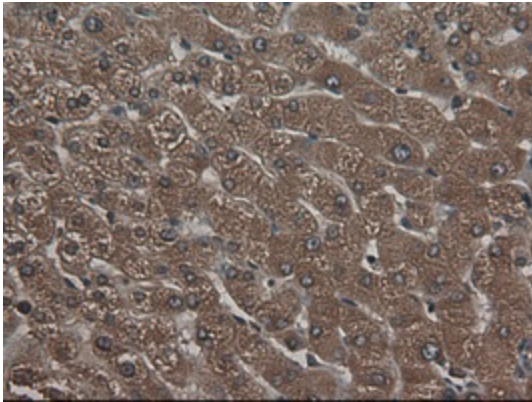
Immunohistochemical staining of paraffin-embedded breast within the normal limits using anti-CPA1 ([TA500170]) mouse monoclonal antibody (Heat-induced epitope retrieval by 10mM citric buffer, pH6.0, 100°C for 10min).



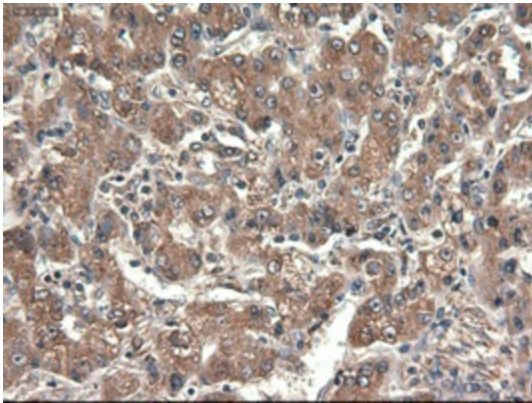
Immunohistochemical staining of paraffin-embedded kidney within the normal limits using anti-CPA1 ([TA500170]) mouse monoclonal antibody (Heat-induced epitope retrieval by 10mM citric buffer, pH6.0, 100°C for 10min).



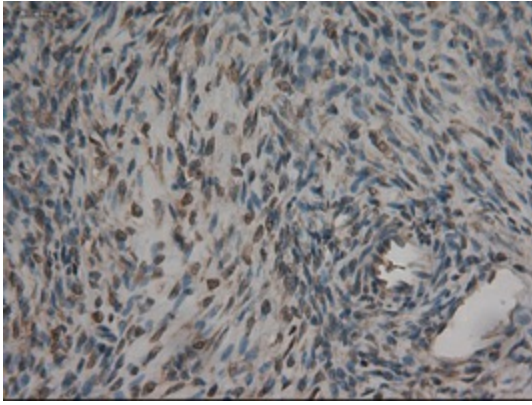
Immunohistochemical staining of paraffin-embedded Carcinoma of kidney using anti-CPA1 ([TA500170]) mouse monoclonal antibody (Heat-induced epitope retrieval by 10mM citric buffer, pH6.0, 100°C for 10min).



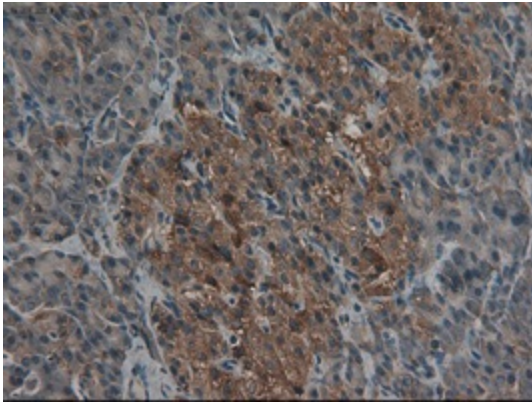
Immunohistochemical staining of paraffin-embedded liver within the normal limits using anti-CPA1 ([TA500170]) mouse monoclonal antibody (Heat-induced epitope retrieval by 10mM citric buffer, pH6.0, 100°C for 10min).



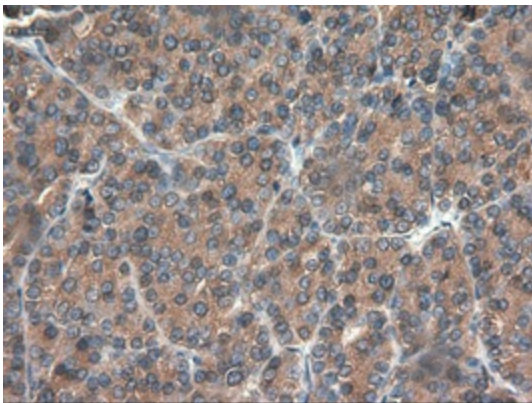
Immunohistochemical staining of paraffin-embedded Carcinoma of liver using anti-CPA1 ([TA500170]) mouse monoclonal antibody (Heat-induced epitope retrieval by 10mM citric buffer, pH6.0, 100°C for 10min).



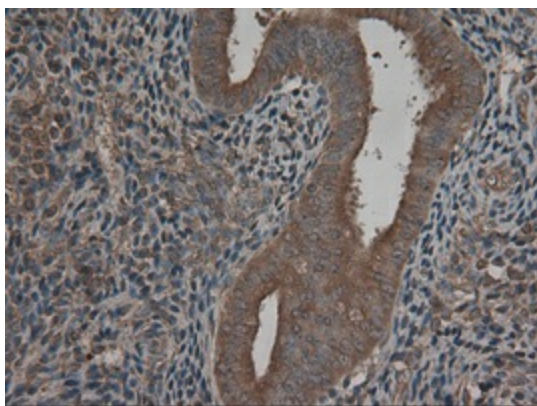
Immunohistochemical staining of paraffin-embedded ovary within the normal limits using anti-CPA1 ([TA500170]) mouse monoclonal antibody (Heat-induced epitope retrieval by 10mM citric buffer, pH6.0, 100°C for 10min).



Immunohistochemical staining of paraffin-embedded pancreas within the normal limits using anti-CPA1 ([TA500170]) mouse monoclonal antibody (Heat-induced epitope retrieval by 10mM citric buffer, pH6.0, 100°C for 10min).



Immunohistochemical staining of paraffin-embedded Carcinoma of pancreas using anti-CPA1 ([TA500170]) mouse monoclonal antibody (Heat-induced epitope retrieval by 10mM citric buffer, pH6.0, 100°C for 10min).



Immunohistochemical staining of paraffin-embedded endometrium within the normal limits using anti-CPA1 ([TA500170]) mouse monoclonal antibody (Heat-induced epitope retrieval by 10mM citric buffer, pH6.0, 100°C for 10min).