

Product datasheet for **TA500146AM**

Pancreatic alpha amylase (AMY2A) Mouse Monoclonal Antibody (Biotin conjugated) [Clone ID: OTI6D4]

Product data:

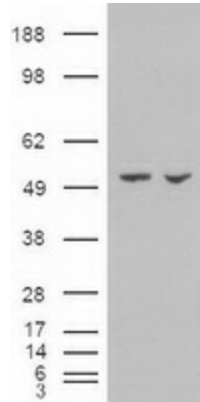
Product Type:	Primary Antibodies
Clone Name:	OTI6D4
Applications:	IHC, WB
Recommended Dilution:	WB: 1:500, IHC 1:50
Reactivity:	Human
Host:	Mouse
Isotype:	IgG2b
Clonality:	Monoclonal
Immunogen:	Recombinant protein expressed in E.coli corresponding to amino acids 300-511 of human AMY2A
Formulation:	PBS (pH 7.3) containing 1% BSA, 50% glycerol and 0.02% sodium azide.
Concentration:	0.5 mg/ml
Purification:	Purified from mouse ascites fluids or tissue culture supernatant by affinity chromatography (protein A/G)
Conjugation:	Biotin
Storage:	Store at -20°C as received.
Stability:	Stable for 12 months from date of receipt.
Predicted Protein Size:	57.7 kDa
Gene Name:	amylase alpha 2A
Database Link:	NP_000690 Entrez Gene 279 Human P04746
Background:	Amylases are secreted proteins that hydrolyze 1,4-alpha-glucoside bonds in oligosaccharides and polysaccharides, and thus catalyze the first step in digestion of dietary starch and glycogen. The human genome has a cluster of several amylase genes that are expressed at high levels in either salivary gland or pancreas. This gene encodes an amylase isoenzyme produced by the pancreas



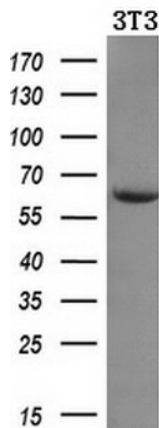
[View online »](#)

Synonyms: AMY2; PA
Protein Families: Secreted Protein
Protein Pathways: Metabolic pathways, Starch and sucrose metabolism

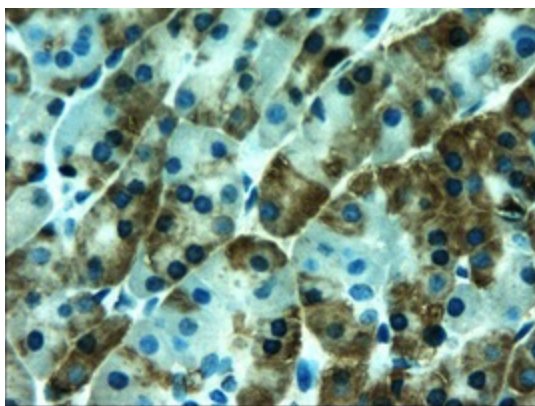
Product images:



HEK293T cells were transfected with the pCMV6-ENTRY control (Cat# [PS100001], Left lane) or pCMV6-ENTRY AMY2A (Cat# [RC202805], Right lane) cDNA for 48 hrs and lysed. Equivalent amounts of cell lysates (5 ug per lane) were separated by SDS-PAGE and immunoblotted with anti-AMY2A(Cat# [TA500146]). Positive lysates [LY424559] (100ug) and [LC424559] (20ug) can be purchased separately from OriGene.



Western blot analysis of extracts (10ug) from a mouse cell line by using anti-AMY2A monoclonal antibody (1:200).



Immunohistochemical staining of paraffin-embedded pancreas within the normal limits using anti-AMY2A ([TA500146]) mouse monoclonal antibody (Heat-induced epitope retrieval by 10mM citric buffer, pH6.0, 100°C for 10min).