

Product datasheet for **TA500122BM**

PTCH1 Mouse Monoclonal Antibody (HRP conjugated) [Clone ID: OTI3C2]

Product data:

Product Type:	Primary Antibodies
Clone Name:	OTI3C2
Applications:	IF, WB
Recommended Dilution:	WB: 1:500, IF (1:100)
Reactivity:	Human, Mouse, Rat
Host:	Mouse
Isotype:	IgG2b
Clonality:	Monoclonal
Immunogen:	Recombinant protein expressed in E.coli corresponding to amino acids 122-436 of human Patched1
Formulation:	PBS (pH 7.3) containing 1% BSA, 50% glycerol.
Concentration:	0.5 mg/ml
Purification:	Purified from mouse ascites fluids or tissue culture supernatant by affinity chromatography (protein A/G)
Conjugation:	HRP
Storage:	Store at -20°C as received.
Stability:	Stable for 12 months from date of receipt.
Predicted Protein Size:	160.4 kDa
Gene Name:	patched 1
Database Link:	NP_000255 Entrez Gene 19206 Mouse Entrez Gene 89830 Rat Entrez Gene 5727 Human Q13635



[View online »](#)

Background:

This gene encodes a member of the patched gene family. The encoded protein is the receptor for sonic hedgehog, a secreted molecule implicated in the formation of embryonic structures and in tumorigenesis, as well as the desert hedgehog and indian hedgehog proteins. This gene functions as a tumor suppressor. Mutations of this gene have been associated with basal cell nevus syndrome, esophageal squamous cell carcinoma, trichoepitheliomas, transitional cell carcinomas of the bladder, as well as holoprosencephaly. Alternative splicing results in multiple transcript variants encoding different isoforms. Additional splice variants have been described, but their full length sequences and biological validity cannot be determined currently.

Synonyms:

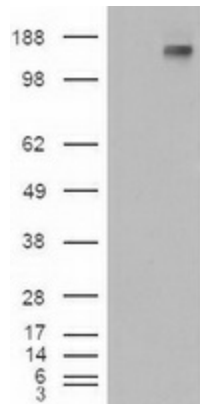
BCNS; HPE7; NBCCS; PTC; PTC1; PTCH; PTCH11

Protein Families:

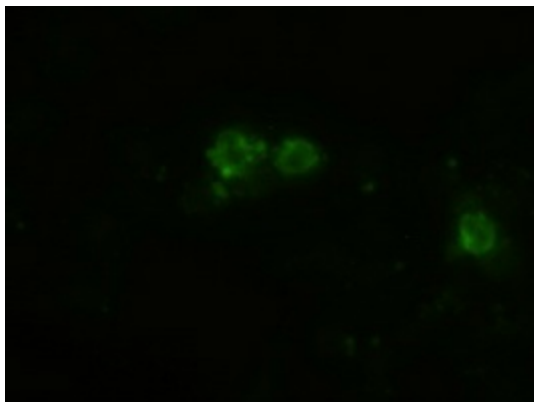
Druggable Genome, ES Cell Differentiation/IPS, Transmembrane

Protein Pathways:

Basal cell carcinoma, Hedgehog signaling pathway, Pathways in cancer

Product images:


HEK293T cells were transfected with the pCMV6-ENTRY control (Left lane) or pCMV6-ENTRY PTCH1 ([RC216999], Right lane) cDNA for 48 hrs and lysed. Equivalent amounts of cell lysates (5 ug per lane) were separated by SDS-PAGE and immunoblotted with anti-PTCH1. Positive lysates [LY424834] (100ug) and [LC424834] (20ug) can be purchased separately from OriGene.



Anti-Patched1 mouse monoclonal antibody ([TA500122]) immunofluorescent staining of HeLa cells transiently transfected by pCMV6-ENTRY PTCH1 ([RC201597])