

## Product datasheet for **TA500121M**

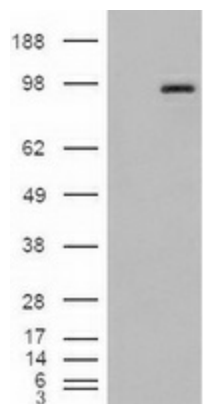
### CD31 (PECAM1) Mouse Monoclonal Antibody [Clone ID: OTI8A9]

#### Product data:

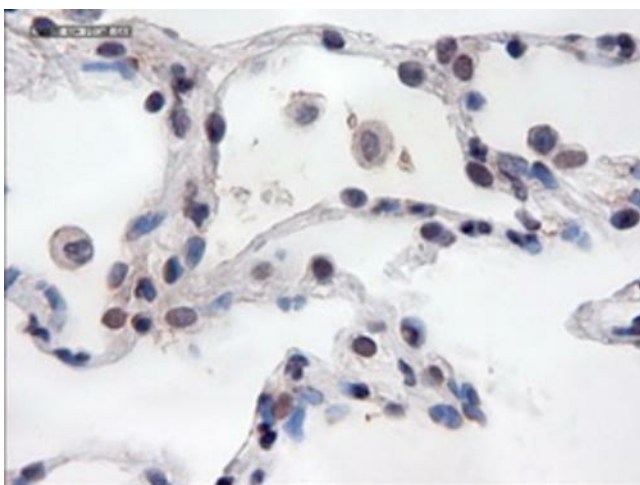
Product Type:	Primary Antibodies
Clone Name:	OTI8A9
Applications:	IHC, WB
Recommended Dilution:	WB: 1:500, IHC 1:50
Reactivity:	Human
Host:	Mouse
Isotype:	IgG2a
Clonality:	Monoclonal
Immunogen:	Recombinant protein expressed in E.coli corresponding to amino acids 425-591 of human PECAM1
Formulation:	PBS (pH 7.3) containing 1% BSA, 50% glycerol and 0.02% sodium azide.
Concentration:	1 mg/ml
Purification:	Purified from mouse ascites fluids or tissue culture supernatant by affinity chromatography (protein A/G)
Conjugation:	Unconjugated
Storage:	Store at -20°C as received.
Stability:	Stable for 12 months from date of receipt.
Predicted Protein Size:	82.4 kDa
Gene Name:	platelet and endothelial cell adhesion molecule 1
Database Link:	<a href="#">NP_000433</a> <a href="#">Entrez Gene 5175 Human</a> <a href="#">P16284</a>
Background:	The protein encoded by this gene is a cell adhesion molecule expressed on platelets and at endothelial cellintercellular junctions
Synonyms:	CD31; CD31/EndoCAM; endoCAM; GPIIA'; PECA1; PECAM-1
Protein Families:	Druggable Genome, ES Cell Differentiation/IPS, Transmembrane
Protein Pathways:	Cell adhesion molecules (CAMs), Leukocyte transendothelial migration


[View online »](#)

## Product images:



HEK293T cells were transfected with the pCMV6-ENTRY control (Left lane) or pCMV6-ENTRY PECAM1 ([RC208654], Right lane) cDNA for 48 hrs and lysed. Equivalent amounts of cell lysates (5 ug per lane) were separated by SDS-PAGE and immunoblotted with anti-PECAM1.



Immunohistochemical staining of paraffin-embedded lung within the normal limits using anti-PECAM1 ([TA000121]) mouse monoclonal antibody. Heat-induced epitope retrieval by EDTA solution buffer pH 8.0 at 120°C for 3 min.