

Product datasheet for **TA500121AM**

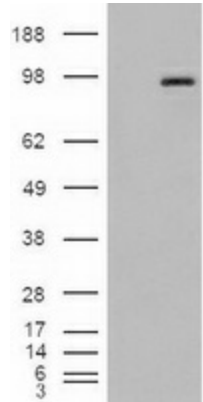
CD31 (PECAM1) Mouse Monoclonal Antibody (Biotin conjugated) [Clone ID: OT18A9]

Product data:

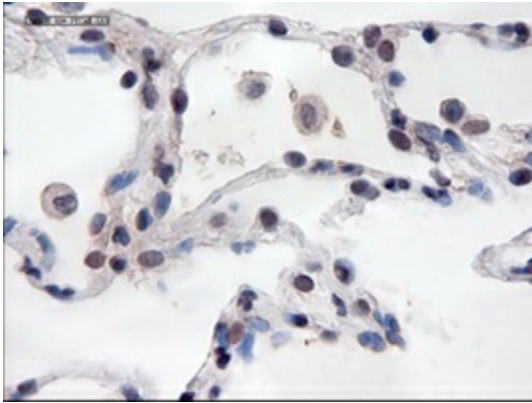
| | |
|-------------------------|--|
| Product Type: | Primary Antibodies |
| Clone Name: | OT18A9 |
| Applications: | IHC, WB |
| Recommended Dilution: | WB: 1:500, IHC 1:50 |
| Reactivity: | Human |
| Host: | Mouse |
| Isotype: | IgG2a |
| Clonality: | Monoclonal |
| Immunogen: | Recombinant protein expressed in E.coli corresponding to amino acids 425-591 of human PECAM1 |
| Formulation: | PBS (pH 7.3) containing 1% BSA, 50% glycerol and 0.02% sodium azide. |
| Concentration: | 0.5 mg/ml |
| Purification: | Purified from mouse ascites fluids or tissue culture supernatant by affinity chromatography (protein A/G) |
| Conjugation: | Biotin |
| Storage: | Store at -20°C as received. |
| Stability: | Stable for 12 months from date of receipt. |
| Predicted Protein Size: | 82.4 kDa |
| Gene Name: | platelet and endothelial cell adhesion molecule 1 |
| Database Link: | NP_000433 Entrez Gene 5175 Human P16284 |
| Background: | The protein encoded by this gene is a cell adhesion molecule expressed on platelets and at endothelial cellintercellular junctions |
| Synonyms: | CD31; CD31/EndoCAM; endoCAM; GPIIA'; PECA1; PECAM-1 |
| Protein Families: | Druggable Genome, ES Cell Differentiation/IPS, Transmembrane |
| Protein Pathways: | Cell adhesion molecules (CAMs), Leukocyte transendothelial migration |



[View online »](#)

Product images:

HEK293T cells were transfected with the pCMV6-ENTRY control (Left lane) or pCMV6-ENTRY PECAM1 ([RC208654], Right lane) cDNA for 48 hrs and lysed. Equivalent amounts of cell lysates (5 ug per lane) were separated by SDS-PAGE and immunoblotted with anti-PECAM1.



Immunohistochemical staining of paraffin-embedded lung within the normal limits using anti-PECAM1 ([TA000121]) mouse monoclonal antibody (Heat-induced epitope retrieval by 10mM citric buffer, pH6.0, 100°C for 10min).