

Product datasheet for **TA500115AM**

Neurotrophin 3 (NTF3) Mouse Monoclonal Antibody (Biotin conjugated) [Clone ID: OTI5C7]

Product data:

Product Type:	Primary Antibodies
Clone Name:	OTI5C7
Applications:	IHC, WB
Recommended Dilution:	WB: 1:5000, IHC 1:50
Reactivity:	Human, Mouse, Rat
Host:	Mouse
Isotype:	IgG2a
Clonality:	Monoclonal
Immunogen:	Recombinant protein expressed in E.coli corresponding to amino acids 139-257 of human NT3
Formulation:	PBS (pH 7.3) containing 1% BSA, 50% glycerol and 0.02% sodium azide.
Concentration:	0.5 mg/ml
Purification:	Purified from mouse ascites fluids or tissue culture supernatant by affinity chromatography (protein A/G)
Conjugation:	Biotin
Storage:	Store at -20°C as received.
Stability:	Stable for 12 months from date of receipt.
Predicted Protein Size:	27.4 kDa
Gene Name:	neurotrophin 3
Database Link:	NP_001096124 Entrez Gene 18205 Mouse Entrez Gene 81737 Rat Entrez Gene 4908 Human P20783



[View online »](#)

Background:

NT3 is a member of the neurotrophin family, that controls survival and differentiation of mammalian neurons. It is closely related to both nerve growth factor and brain-derived neurotrophic factor. It may be involved in the maintenance of the adult nervous system, and may affect development of neurons in the embryo when it is expressed in human placenta. NT3-deficient mice generated by gene targeting display severe movement defects of the limbs. The mature peptide of this protein is identical in all mammals examined including human, pig, rat and mouse

Synonyms:

HDNF; NGF-2; NGF2; NT-3; NT3

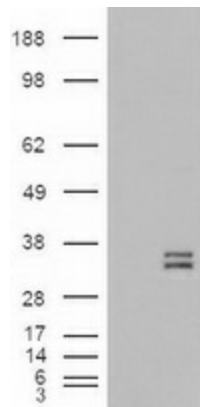
Protein Families:

Druggable Genome, Secreted Protein

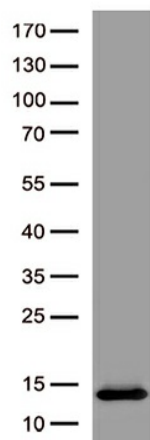
Protein Pathways:

MAPK signaling pathway, Neurotrophin signaling pathway

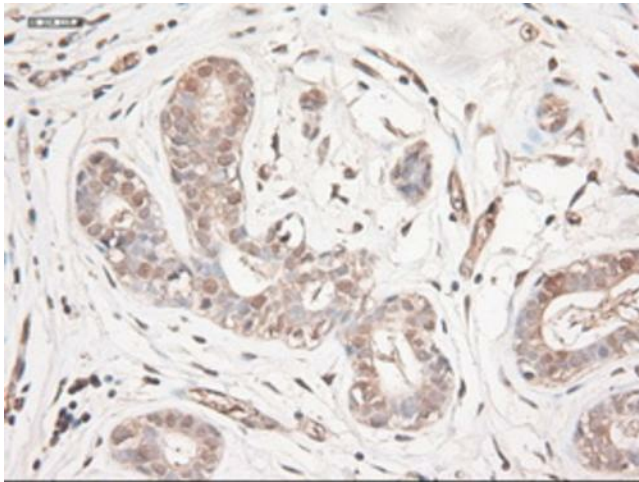
Product images:



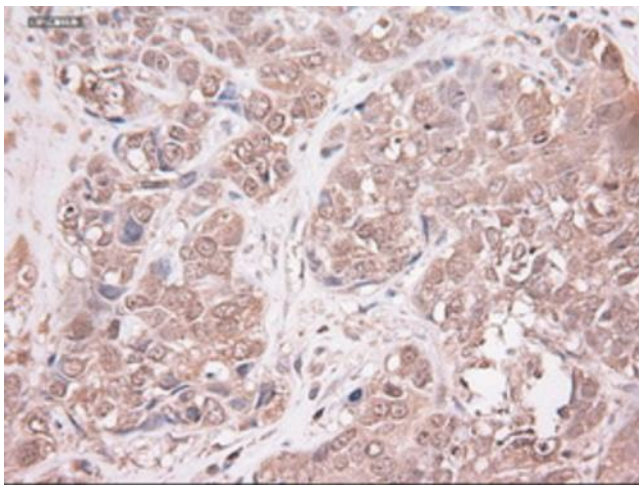
HEK293T cells were transfected with the pCMV6-ENTRY control (Cat# [PS100001], Left lane) or pCMV6-ENTRY NTF3 (Cat# [RC214281], Right lane) cDNA for 48 hrs and lysed. Equivalent amounts of cell lysates (5 ug per lane) were separated by SDS-PAGE and immunoblotted with anti-NTF3 (Cat# [TA500115]). Positive lysates [LY420181] (100ug) and [LC420181] (20ug) can be purchased separately from OriGene.



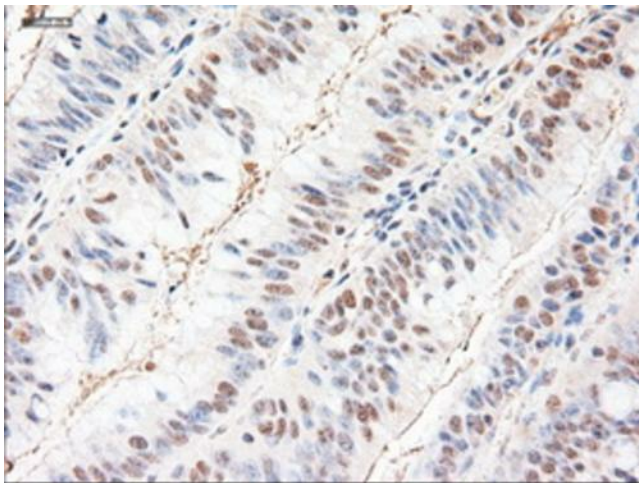
Western blot analysis of recombinant human NTF3 protein (Tyr139-Thr257, 0.02ug) by using anti-NTF3 antibody ([TA500115]). (1:500)



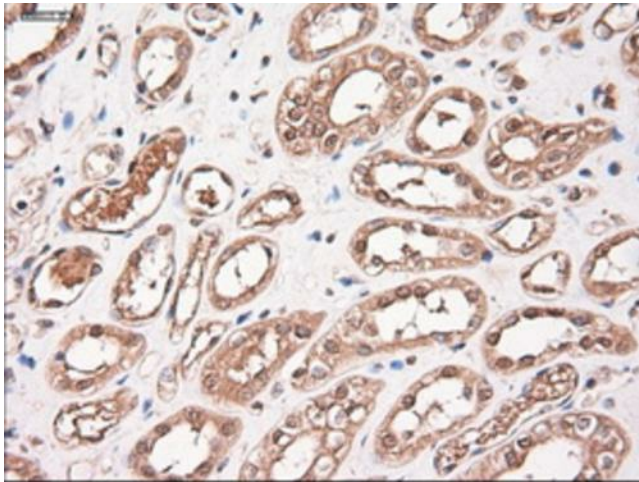
Immunohistochemical staining of paraffin-embedded breast within the normal limits using anti-NTF3 ([TA500115]) mouse monoclonal antibody. Heat-induced epitope retrieval by EDTA solution buffer pH 8.0 at 120°C for 3 min.



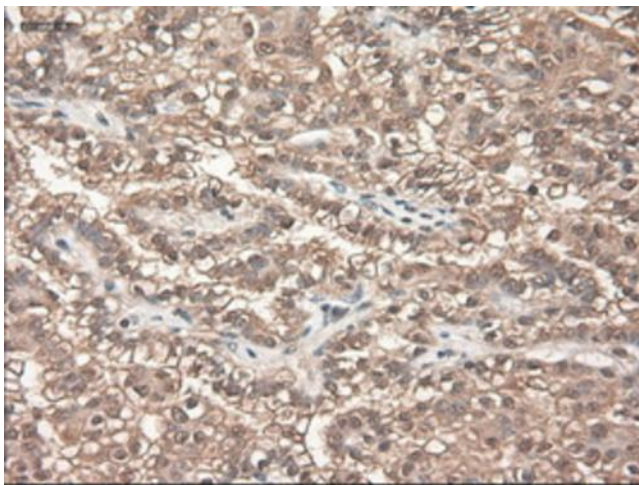
Immunohistochemical staining of paraffin-embedded Adenocarcinoma of breast using anti-NTF3 ([TA500115]) mouse monoclonal antibody. Heat-induced epitope retrieval by EDTA solution buffer pH 8.0 at 120°C for 3 min.



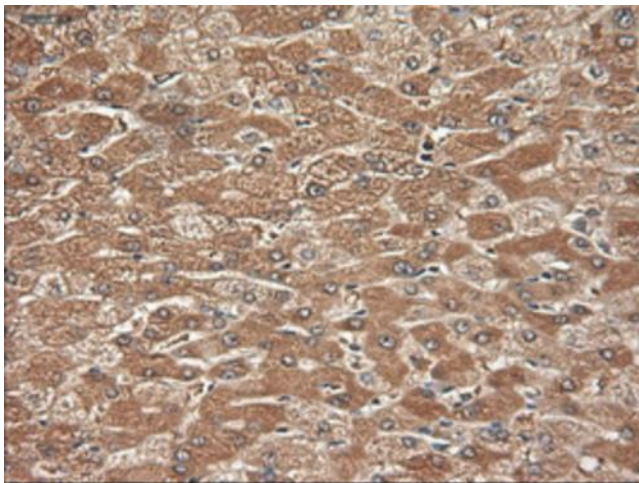
Immunohistochemical staining of paraffin-embedded Adenocarcinoma of colon using anti-NTF3 ([TA500115]) mouse monoclonal antibody. Heat-induced epitope retrieval by EDTA solution buffer pH 8.0 at 120°C for 3 min.



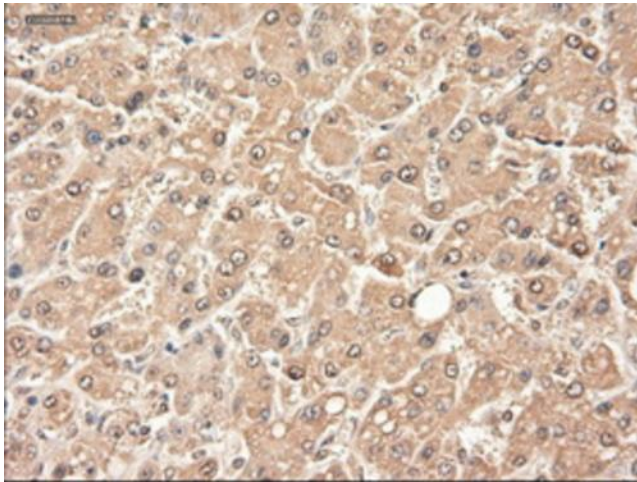
Immunohistochemical staining of paraffin-embedded kidney within the normal limits using anti-NTF3 ([TA500115]) mouse monoclonal antibody. Heat-induced epitope retrieval by EDTA solution buffer pH 8.0 at 120°C for 3 min.



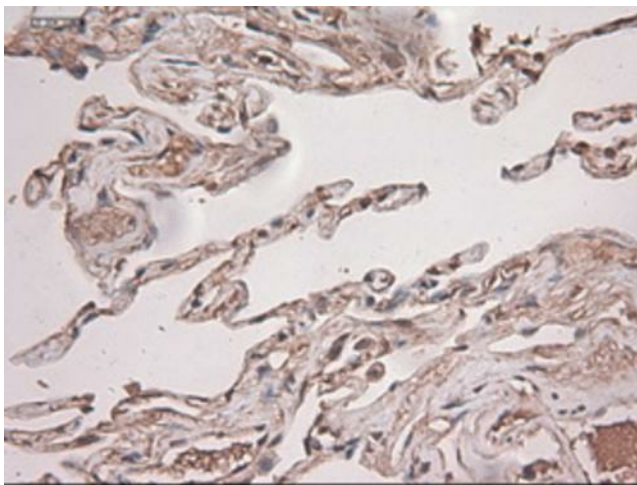
Immunohistochemical staining of paraffin-embedded Carcinoma of kidney using anti-NTF3 ([TA500115]) mouse monoclonal antibody. Heat-induced epitope retrieval by EDTA solution buffer pH 8.0 at 120°C for 3 min.



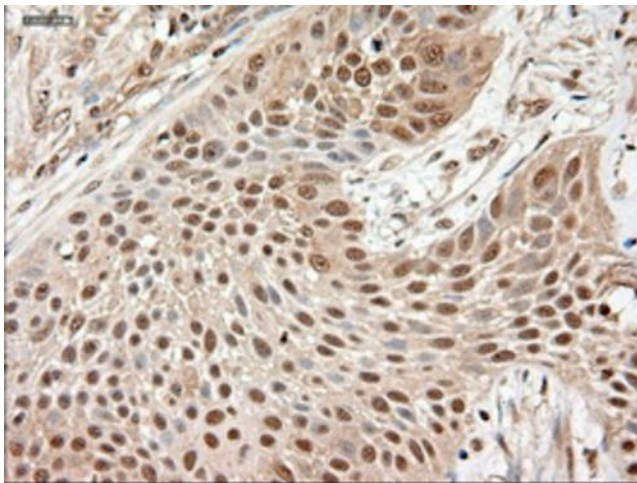
Immunohistochemical staining of paraffin-embedded liver within the normal limits using anti-NTF3 ([TA500115]) mouse monoclonal antibody. Heat-induced epitope retrieval by EDTA solution buffer pH 8.0 at 120°C for 3 min.



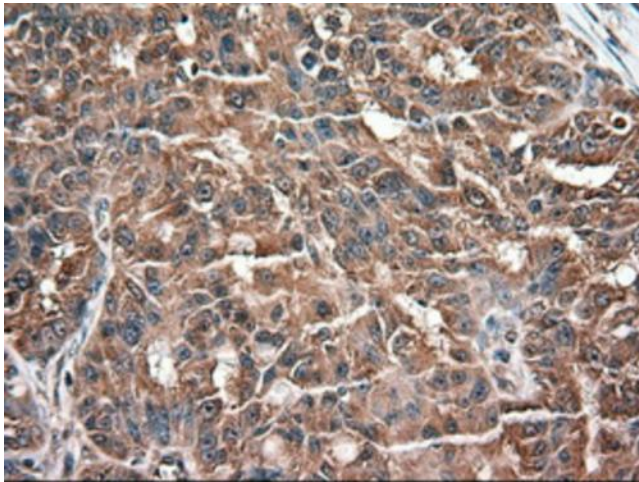
Immunohistochemical staining of paraffin-embedded Carcinoma of liver using anti-NTF3 ([TA500115]) mouse monoclonal antibody. Heat-induced epitope retrieval by EDTA solution buffer pH 8.0 at 120°C for 3 min.



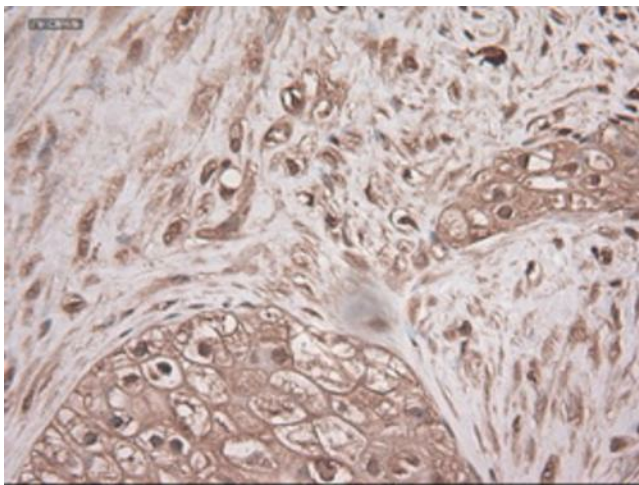
Immunohistochemical staining of paraffin-embedded lung within the normal limits using anti-NTF3 ([TA500115]) mouse monoclonal antibody. Heat-induced epitope retrieval by EDTA solution buffer pH 8.0 at 120°C for 3 min.



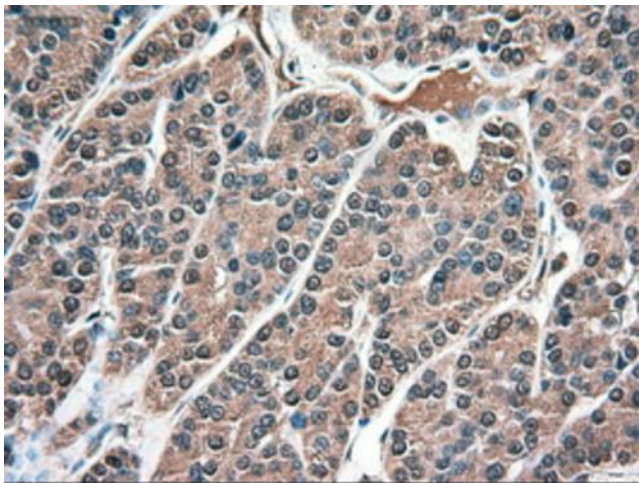
Immunohistochemical staining of paraffin-embedded Carcinoma of lung using anti-NTF3 ([TA500115]) mouse monoclonal antibody. Heat-induced epitope retrieval by EDTA solution buffer pH 8.0 at 120°C for 3 min.



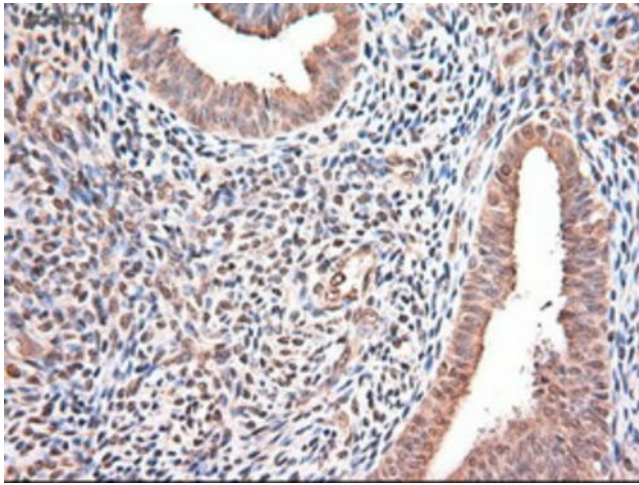
Immunohistochemical staining of paraffin-embedded Adenocarcinoma of ovary using anti-NTF3 ([TA500115]) mouse monoclonal antibody. Heat-induced epitope retrieval by EDTA solution buffer pH 8.0 at 120°C for 3 min.



Immunohistochemical staining of paraffin-embedded Carcinoma of pancreas using anti-NTF3 ([TA500115]) mouse monoclonal antibody. Heat-induced epitope retrieval by EDTA solution buffer pH 8.0 at 120°C for 3 min.



Immunohistochemical staining of paraffin-embedded Carcinoma of thyroid using anti-NTF3 ([TA500115]) mouse monoclonal antibody. Heat-induced epitope retrieval by EDTA solution buffer pH 8.0 at 120°C for 3 min.



Immunohistochemical staining of paraffin-embedded endometrium within the normal limits using anti-NTF3 ([TA500115]) mouse monoclonal antibody. Heat-induced epitope retrieval by EDTA solution buffer pH 8.0 at 120°C for 3 min.

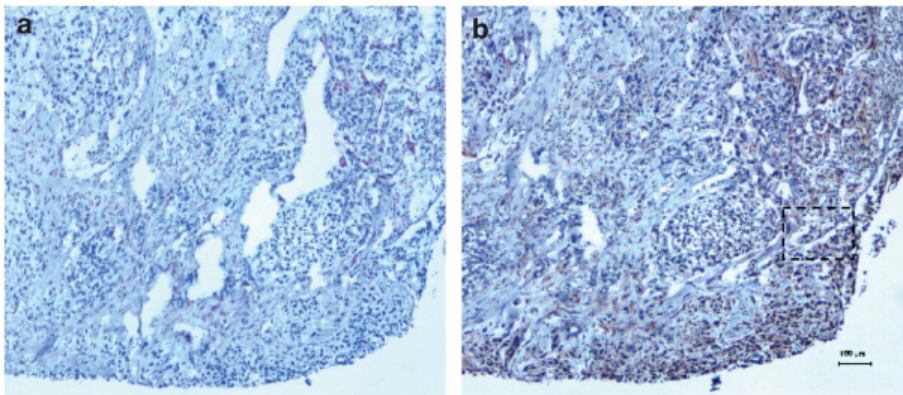


Figure from citation: Detection of NT-3 (NTF3) protein in brain metastases from breast cancer patients. (a) $\times 100$ magnification of the brain metastasis tissue section with the isotype-matched negative control antibody staining. (b) $\times 100$ magnification of the brain metastasis tissue section with the NT-3 antibody staining. [View Citation](#). Heat-induced epitope retrieval by EDTA solution buffer pH 8.0 at 120°C for 3 min.