

## Product datasheet for TA500114

### HES1 Mouse Monoclonal Antibody [Clone ID: OTI4H1]

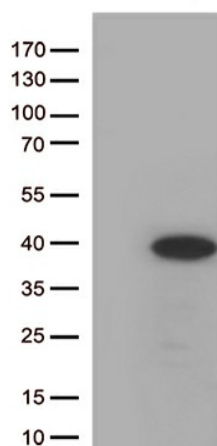
#### Product data:

Product Type:	Primary Antibodies
Clone Name:	OTI4H1
Applications:	IF, IHC, WB
Recommended Dilution:	WB 1:1000; IHC 1:50; RPPA 1:75; IF (1:100)
Reactivity:	Human, Mouse, Rat
Host:	Mouse
Isotype:	IgG1
Clonality:	Monoclonal
Immunogen:	Recombinant protein expressed in E.coli corresponding to amino acids 1-280 of human HES1
Formulation:	PBS (pH 7.3) containing 1% BSA, 50% glycerol and 0.02% sodium azide.
Concentration:	1 mg/ml
Purification:	Purified from mouse ascites fluids or tissue culture supernatant by affinity chromatography (protein A/G)
Storage:	Store at -20°C as received.
Stability:	Stable for 12 months from date of receipt.
Predicted Protein Size:	29.4 kDa
Gene Name:	hes family bHLH transcription factor 1
Database Link:	<a href="#">NP_005515 Entrez Gene 15205 Mouse</a> <a href="#">Entrez Gene 29577 Rat</a> <a href="#">Entrez Gene 3280 Human</a>
Background:	This protein belongs to the basic helix-loop-helix family of transcription factors. It is a transcriptional repressor of genes that require a bHLH protein for their transcription. The protein has a particular type of basic domain that contains a helix interrupting protein that binds to the N-box rather than the canonical E-box.
Synonyms:	bHLHb39; HES-1; HHL; HRY
Protein Families:	Adult stem cells, Cancer stem cells, Druggable Genome, ES Cell Differentiation/IPS, Stem cell relevant signaling - DSL/Notch pathway, Transcription Factors
Protein Pathways:	Maturity onset diabetes of the young, Notch signaling pathway

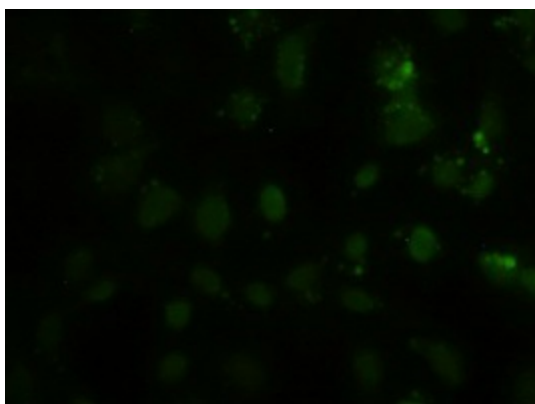


[View online »](#)

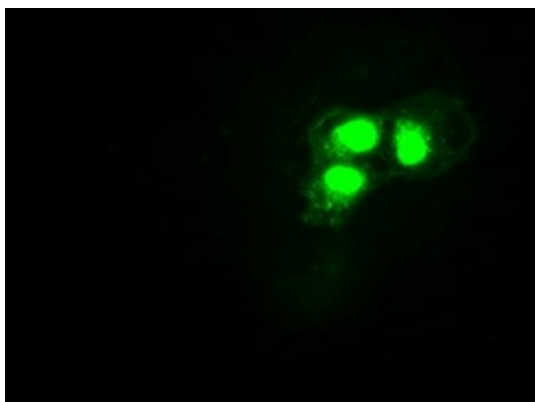
## Product images:



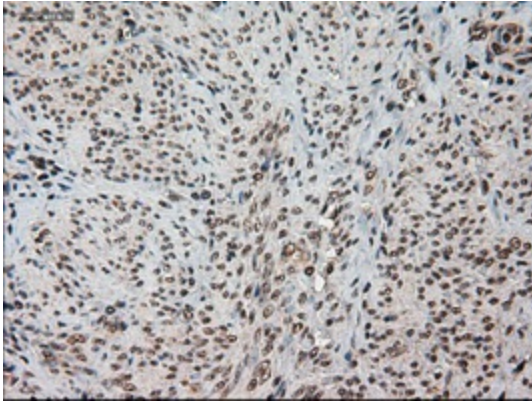
HEK293T cells were transfected with the pCMV6-ENTRY control (Left lane) or pCMV6-ENTRY HES1 ([RC211709], Right lane) cDNA for 48 hrs and lysed. Equivalent amounts of cell lysates (5 ug per lane) were separated by SDS-PAGE and immunoblotted with anti-HES1 (1:500).



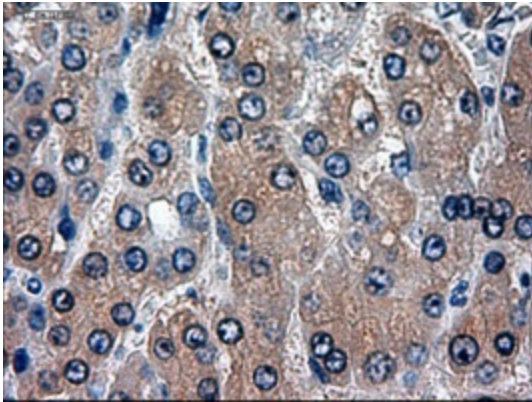
Immunofluorescent staining of HeLa cells using anti-HES1 mouse monoclonal antibody (TA500114).



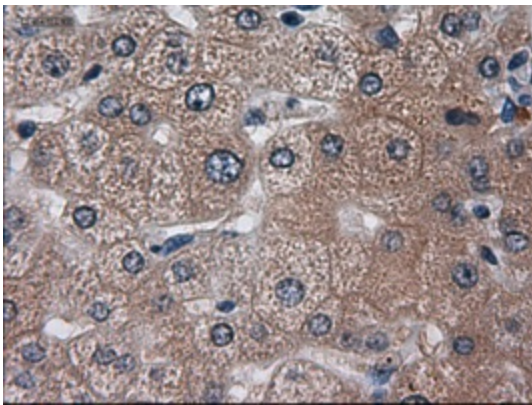
Anti-HES1 mouse monoclonal antibody (TA500114) immunofluorescent staining of COS7 cells transiently transfected by pCMV6-ENTRY HES1 ([RC211709]).



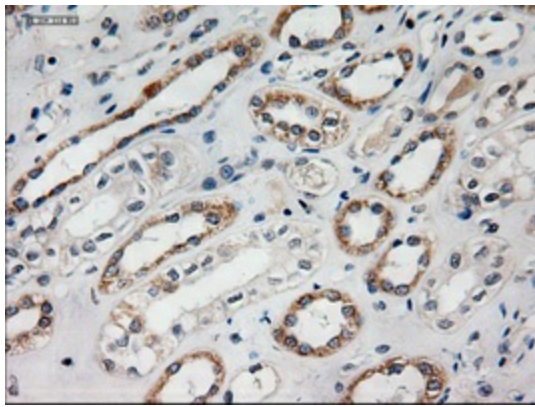
Immunohistochemical staining of paraffin-embedded endometrium within the normal limits using anti-HES1 (TA500114) mouse monoclonal antibody (Heat-induced epitope retrieval by 10mM citric buffer, pH6.0, 100°C for 10min).



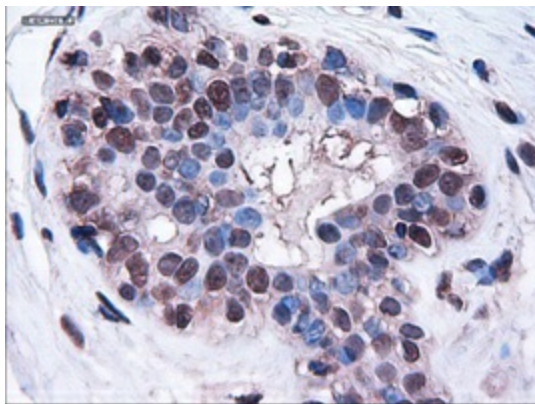
Immunohistochemical staining of paraffin-embedded Carcinoma of liver using anti-HES1 (TA500114) mouse monoclonal antibody (Heat-induced epitope retrieval by 10mM citric buffer, pH6.0, 100°C for 10min).



Immunohistochemical staining of paraffin-embedded liver within the normal limits using anti-HES1 (TA500114) mouse monoclonal antibody (Heat-induced epitope retrieval by 10mM citric buffer, pH6.0, 100°C for 10min).



Immunohistochemical staining of paraffin-embedded kidney within the normal limits using anti-HES1 (TA500114) mouse monoclonal antibody (Heat-induced epitope retrieval by 10mM citric buffer, pH6.0, 100°C for 10min).



Immunohistochemical staining of paraffin-embedded breast within the normal limits using anti-HES1 ([TA000114]) mouse monoclonal antibody (Heat-induced epitope retrieval by 10mM citric buffer, pH6.0, 100°C for 10min).