

## Product datasheet for **TA500098AM**

### Hex (HHEX) Mouse Monoclonal Antibody (Biotin conjugated) [Clone ID: OTI2H7 2c2]

#### Product data:

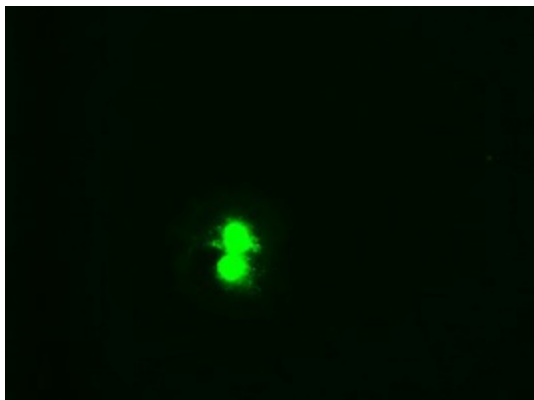
Product Type:	Primary Antibodies
Clone Name:	OTI2H7 2c2
Applications:	IF
Recommended Dilution:	WB: 12000, IF (1:100)
Reactivity:	Human, Mouse, Rat
Host:	Mouse
Isotype:	IgG2b
Clonality:	Monoclonal
Immunogen:	Recombinant fragment expressed in E.coli corresponding to amino acids 100-270 of human Hex
Formulation:	PBS (pH 7.3) containing 1% BSA, 50% glycerol and 0.02% sodium azide.
Concentration:	0.5 mg/ml
Purification:	Purified from mouse ascites fluids or tissue culture supernatant by affinity chromatography (protein A/G)
Conjugation:	Biotin
Storage:	Store at -20°C as received.
Stability:	Stable for 12 months from date of receipt.
Predicted Protein Size:	29.8 kDa (experimental 44 kDa)
Gene Name:	hematopoietically expressed homeobox
Database Link:	<a href="#">NP_002720</a> <a href="#">Entrez Gene 15242 Mouse</a> <a href="#">Entrez Gene 79237 Rat</a> <a href="#">Entrez Gene 3087 Human</a> <a href="#">Q03014</a>
Background:	Hex is a member of the homeobox family of transcription factors, many of which are involved in developmental processes. Expression in specific hematopoietic lineages suggests that this protein may play a role in hematopoietic differentiation.
Synonyms:	HEX; HMPH; HOX11L-PEN; PRH; PRHX
Protein Families:	Druggable Genome, Transcription Factors



[View online »](#)

Protein Pathways: Maturity onset diabetes of the young

**Product images:**



Anti-HHex mouse monoclonal antibody ([TA500098]) immunofluorescent staining of COS7 cells transiently transfected by pCMV6-ENTRY HHex ([RC204815]).