

Product datasheet for **TA500097AM**

Bcl x (BCL2L1) Mouse Monoclonal Antibody (Biotin conjugated) [Clone ID: OTI4A9]

Product data:

Product Type:	Primary Antibodies
Clone Name:	OTI4A9
Applications:	IF, IHC, WB
Recommended Dilution:	WB: 1:200 - 1:1000, IF (1:100)
Reactivity:	Human, Mouse, Rat
Host:	Mouse
Isotype:	IgG2a
Clonality:	Monoclonal
Immunogen:	Recombinant fragment expressed in E.coli corresponding to amino acids 1-212 of human Bcl-XL
Formulation:	PBS (pH 7.3) containing 1% BSA, 50% glycerol and 0.02% sodium azide.
Concentration:	0.5 mg/ml
Purification:	Purified from mouse ascites fluids or tissue culture supernatant by affinity chromatography (protein A/G)
Conjugation:	Biotin
Storage:	Store at -20°C as received.
Stability:	Stable for 12 months from date of receipt.
Predicted Protein Size:	25.9 kDa
Gene Name:	BCL2 like 1
Database Link:	NP_612815 Entrez Gene 12048 Mouse Entrez Gene 24888 Rat Entrez Gene 598 Human Q07817



[View online »](#)

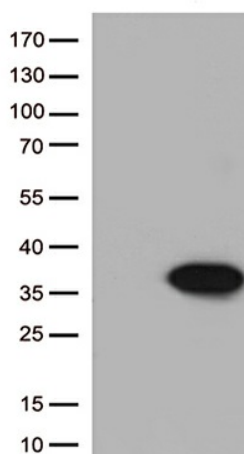
Background: Bcl-XL belongs to the BCL-2 protein family. BCL-2 family members form hetero- or homodimers and act as anti- or pro-apoptotic regulators that are involved in a wide variety of cellular activities. The proteins encoded by this gene are located at the outer mitochondrial membrane, and have been shown to regulate outer mitochondrial membrane channel (VDAC) opening. VDAC regulates mitochondrial membrane potential, and thus controls the production of reactive oxygen species and release of cytochrome C by mitochondria, both of which are the potent inducers of cell apoptosis. Two alternatively spliced transcript variants, which encode distinct isoforms, have been reported. The longer isoform acts as an apoptotic inhibitor and the shorter form acts as an apoptotic activator

Synonyms: Bcl-X; BCL-XL/S; BCL2L1; BCLX; PPP1R52

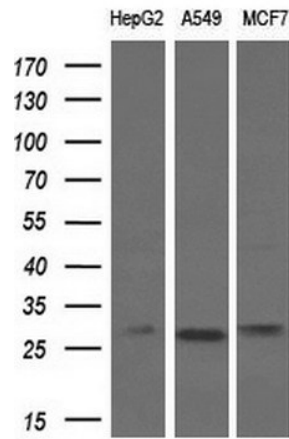
Protein Families: Druggable Genome, ES Cell Differentiation/IPS, Transmembrane

Protein Pathways: Amyotrophic lateral sclerosis (ALS), Apoptosis, Chronic myeloid leukemia, Jak-STAT signaling pathway, Pancreatic cancer, Pathways in cancer, Small cell lung cancer

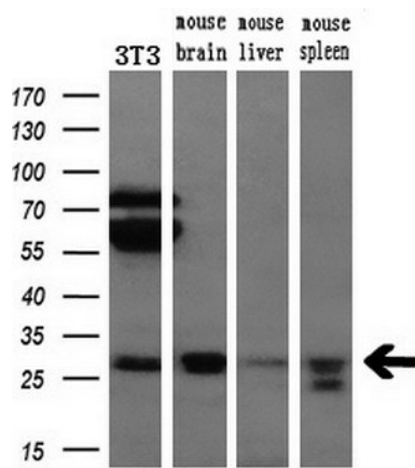
Product images:



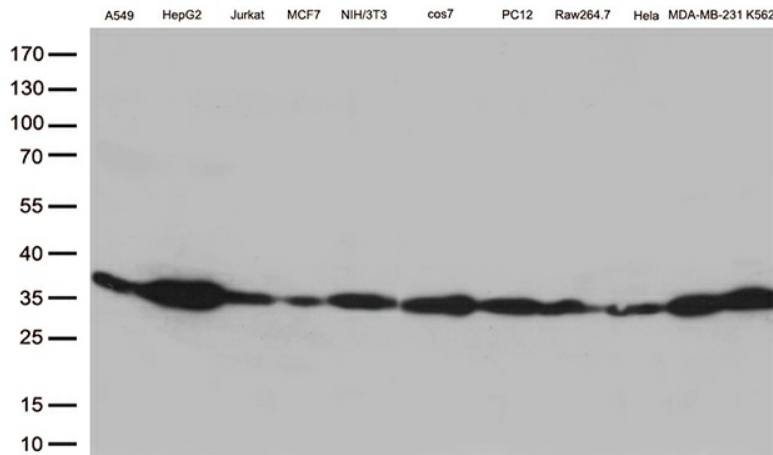
HEK293T cells were transfected with the pCMV6-ENTRY control (Cat# [PS100001], Left lane) or pCMV6-ENTRY BCL2L1 (Cat# [RC201314], Right lane) cDNA for 48 hrs and lysed. Equivalent amounts of cell lysates (5 ug per lane) were separated by SDS-PAGE and immunoblotted with anti-BCL2L1 (Cat# [TA500097]).



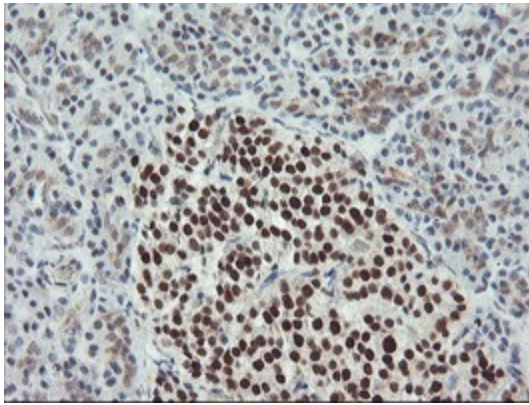
Western blot analysis of extracts (10ug) from 3 different cell lines by using anti-BCL-XL monoclonal antibody (1:200).



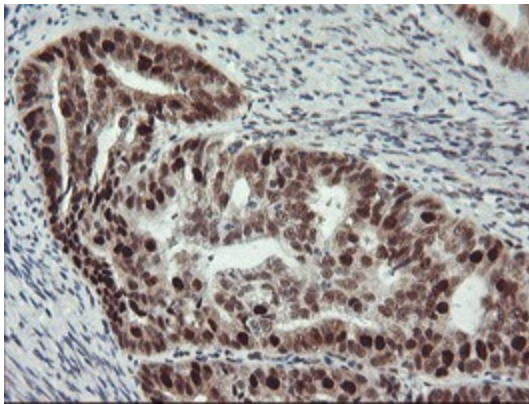
Western blot analysis of extracts (10ug) from a mouse cell line and 3 different mouse tissues by using anti-BCL-XL monoclonal antibody (1:200).



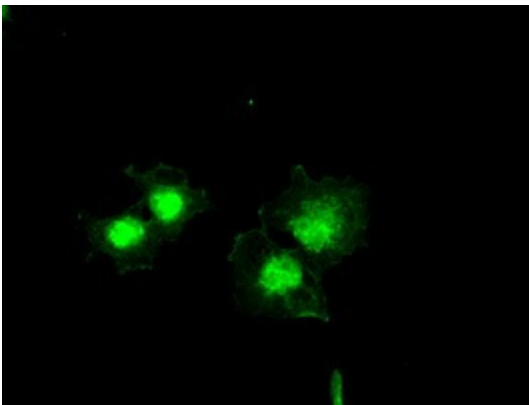
Western blot analysis of extracts (35ug) from 11 cell lines lysates by using anti-BCL2L1 monoclonal antibody (1:500).



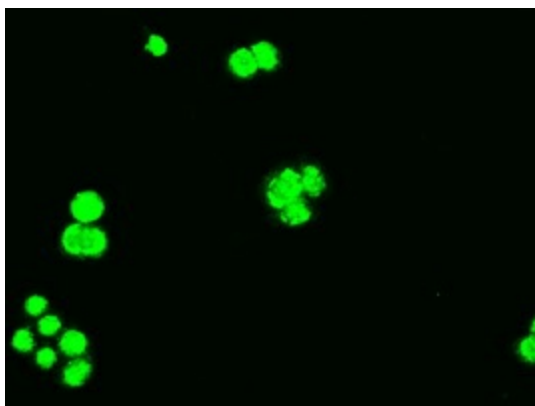
Immunohistochemical staining of paraffin-embedded Human pancreas tissue within the normal limits using anti-BCL-XL mouse monoclonal antibody. ([TA500097]) (1:150)



Immunohistochemical staining of paraffin-embedded Adenocarcinoma of Human endometrium tissue using anti-BCL-XL mouse monoclonal antibody. ([TA500097]) (1:150)



Anti-BCL2L1 mouse monoclonal antibody ([TA500097]) immunofluorescent staining of COS7 cells transiently transfected by pCMV6-ENTRY BCL2L1 ([RC201314]) (1:100).



Immunofluorescent staining of HT29 cells using anti-BCL2L1 mouse monoclonal antibody ([TA500097]) (1:50).