

## Product datasheet for **TA500096M**

### SOX17 Mouse Monoclonal Antibody [Clone ID: OTI2G8]

#### Product data:

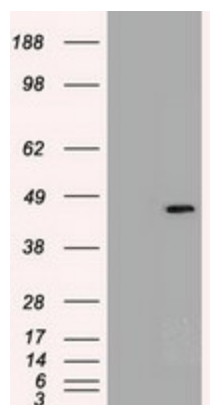
Product Type:	Primary Antibodies
Clone Name:	OTI2G8
Applications:	IF, IHC, WB
Recommended Dilution:	WB 1:1000~2000, IHC 1:50, IF 1:50~100
Reactivity:	Human, Dog, Mouse, Rat
Host:	Mouse
Isotype:	IgG2b
Clonality:	Monoclonal
Immunogen:	Human recombinant protein fragment corresponding to amino acids 177-414 of human SOX17 (NP_071899) produced in E.coli.
Formulation:	PBS (pH 7.3) containing 1% BSA, 50% glycerol and 0.02% sodium azide.
Concentration:	Lot dependent
Purification:	Purified from mouse ascites fluids or tissue culture supernatant by affinity chromatography (protein A/G)
Conjugation:	Unconjugated
Storage:	Store at -20°C as received.
Stability:	Stable for 12 months from date of receipt.
Predicted Protein Size:	43.9 kDa
Gene Name:	SRY-box transcription factor 17
Database Link:	<a href="#">NP_071899</a> <a href="#">Entrez Gene 20671 Mouse</a> <a href="#">Entrez Gene 312936 Rat</a> <a href="#">Entrez Gene 486955 Dog</a> <a href="#">Entrez Gene 64321 Human</a> <a href="#">Q9H6I2</a>
Background:	SOX17 is a member of the SOX (SRY-related HMG-box) family of transcription factors involved in the regulation of embryonic development and in the determination of the cell fate. It may act as a transcriptional regulator after forming a protein complex with other proteins.
Synonyms:	VUR3


[View online »](#)

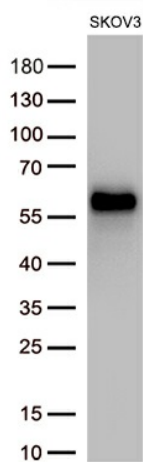
**Protein Families:** Transcription Factors

**Protein Pathways:** Wnt signaling pathway

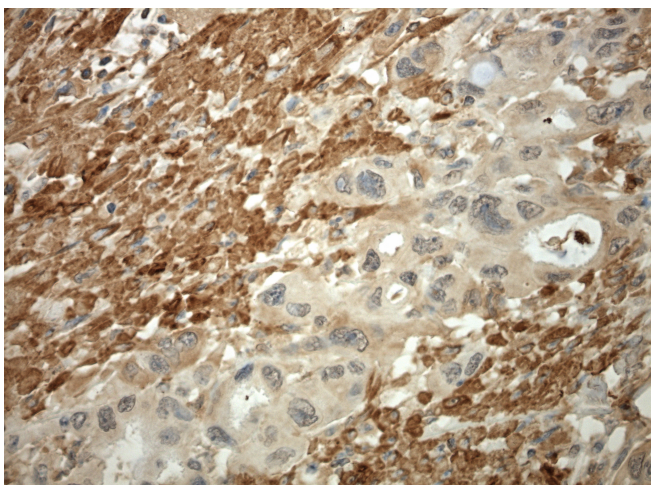
**Product images:**



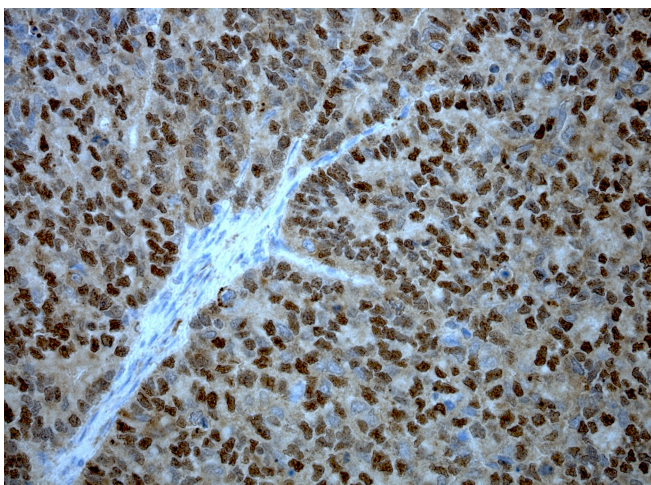
HEK293T cells were transfected with the pCMV6-ENTRY control (Left lane) or pCMV6-ENTRY SOX17 ([RC220888], Right lane) cDNA for 48 hrs and lysed. Equivalent amounts of cell lysates (5 ug per lane) were separated by SDS-PAGE and immunoblotted with anti-SOX17. Positive lysates [LY411669] (100ug) and [LC411669] (20ug) can be purchased separately from OriGene.



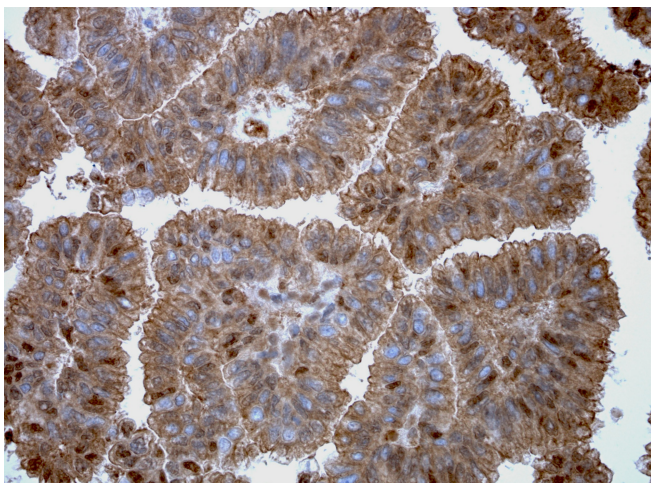
Western blot analysis of extracts (50ug per lane) from SKOV3 lysate by using anti-Sox17 antibody ([TA500096], 1:2000).



Immunohistochemical staining of paraffin-embedded pancreatic carcinoma using anti-SOX17 antibody [TA500096] clone OTI2G8 mouse monoclonal antibody. Protocol used HIER TEE pH9.0 (cat# [B21-100]) and anti-SOX17 at 1:100 dilution. Detection was done with Polink1 Broad Mouse and Rabbit C/N [D11-18] with DAB Kit. Image 40x magnification.



Immunohistochemical staining of paraffin-embedded endometrial carcinoma using anti-SOX17 antibody [TA500096] clone OTI2G8 mouse monoclonal antibody. Protocol used HIER TEE pH9.0 (cat# [B21-100]) and anti-SOX17 at 1:100 dilution. Detection was done with Polink1 Broad Mouse and Rabbit C/N [D11-18] with DAB Kit. Image 40x magnification.



Immunohistochemical staining of paraffin-embedded cervical carcinoma using anti-SOX17 antibody [TA500096] clone OTI2G8 mouse monoclonal antibody. Protocol used HIER TEE pH9.0 (cat# [B21-100]) and anti-SOX17 at 1:100 dilution. Detection was done with Polink1 Broad Mouse and Rabbit C/N [D11-18] with DAB Kit. Image 40x magnification.

SOX17

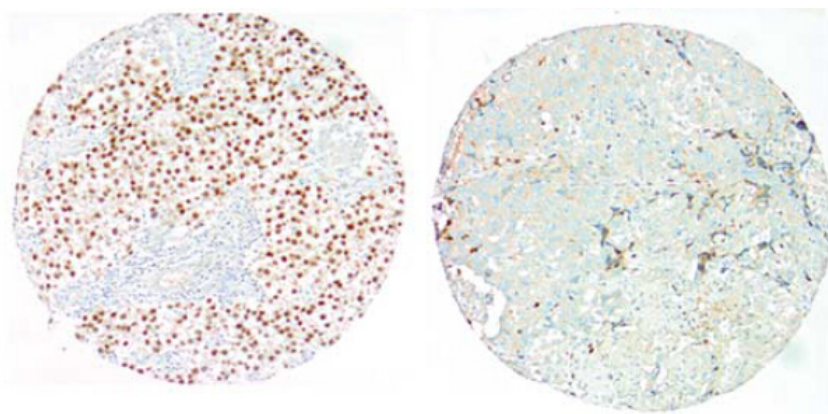
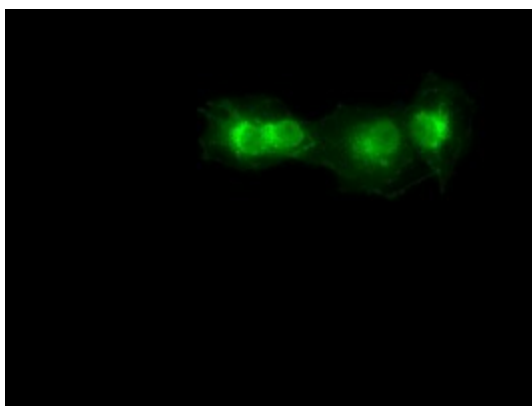
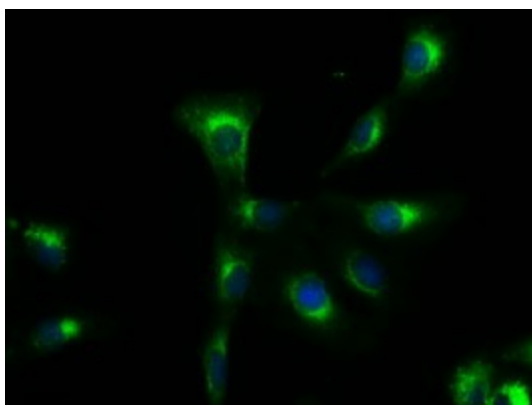


Figure from citation: Corresponding conventional and immunohistochemical stains of human seminoma and embryonal carcinoma by using anti-SOX17 antibody. Seminoma: positivity for SOX17 (Left); Embryonal carcinoma: negative staining for SOX17 (Right). Dilution: 1:2000 [View Citation](#). Heat-induced epitope retrieval by EDTA solution buffer pH 8.0 at 120°C for 3 min.



Anti-SOX17 mouse monoclonal antibody ([TA500096]) immunofluorescent staining of COS7 cells transiently transfected by pCMV6-ENTRY SOX17 ([RC220888]).



Immunofluorescent staining of A549 cells using anti-SOX17 mouse monoclonal antibody ([TA500096]).