

## Product datasheet for **TA500091AM**

### **GATA4 Mouse Monoclonal Antibody (Biotin conjugated) [Clone ID: OTI9F9]**

#### **Product data:**

|                                |   |
|--------------------------------|---|
| <b>Product Type:</b>           | Primary Antibodies  |
| <b>Clone Name:</b>             | OTI9F9  |
| <b>Applications:</b>           | IF, IHC, WB   |
| <b>Recommended Dilution:</b>   | WB 1:200~500, IHC 1:50, IF 1:100  |
| <b>Reactivity:</b>             | Human, Mouse, Rat   |
| <b>Host:</b>                   | Mouse   |
| <b>Isotype:</b>                | IgG3  |
| <b>Clonality:</b>              | Monoclonal  |
| <b>Immunogen:</b>              | Human recombinant protein fragment corresponding to amino acids 296-442 of human GATA4 (NP_002043) produced in E.coli.  |
| <b>Formulation:</b>            | PBS (pH 7.3) containing 1% BSA, 50% glycerol and 0.02% sodium azide.  |
| <b>Concentration:</b>          | 0.5 mg/ml   |
| <b>Purification:</b>           | Purified from mouse ascites fluids or tissue culture supernatant by affinity chromatography (protein A/G)   |
| <b>Conjugation:</b>            | Biotin  |
| <b>Storage:</b>                | Store at -20°C as received.   |
| <b>Stability:</b>              | Stable for 12 months from date of receipt.  |
| <b>Predicted Protein Size:</b> | 44.4 kDa  |
| <b>Gene Name:</b>              | GATA binding protein 4  |
| <b>Database Link:</b>          | <a href="#">NP_002043</a><br><a href="#">Entrez Gene 14463 Mouse</a> <a href="#">Entrez Gene 54254 Rat</a> <a href="#">Entrez Gene 2626 Human</a><br><a href="#">P43694</a>   |
| <b>Background:</b>             | GATA4 encodes a member of the GATA family of zinc-finger transcription factors. Members of this family recognize the GATA motif which is present in the promoters of many genes. This protein is thought to regulate genes involved in embryogenesis and in myocardial differentiation and function. Mutations in this gene have been associated with cardiac septal defects. |

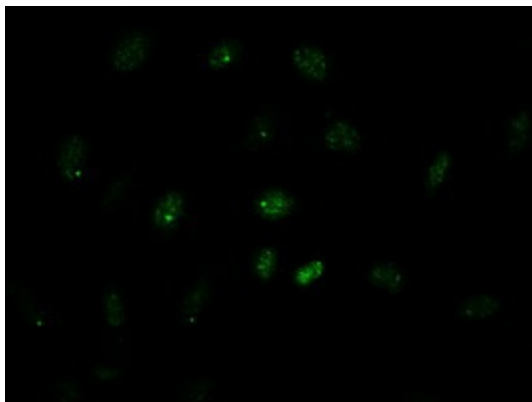


[View online »](#)

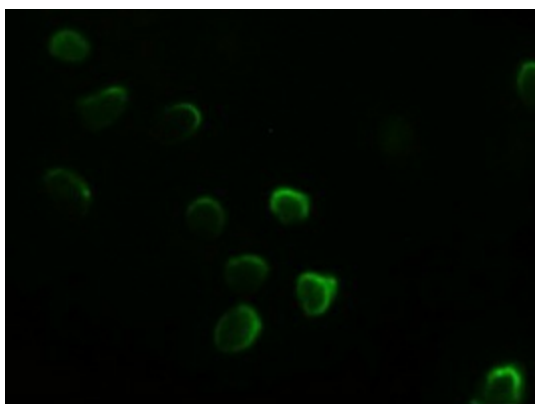
**Synonyms:** ASD2; TACHD; TOF; VSD1

**Protein Families:** Embryonic stem cells, ES Cell Differentiation/IPS, Induced pluripotent stem cells, Transcription Factors

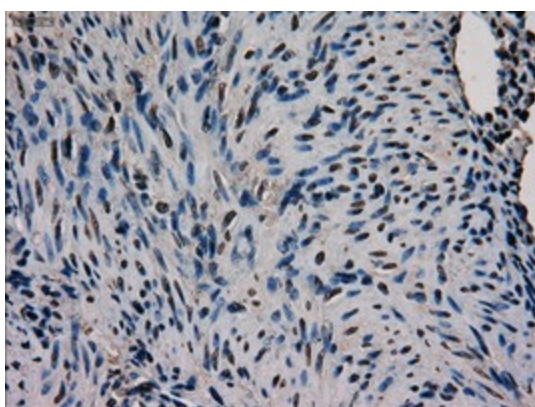
**Product images:**



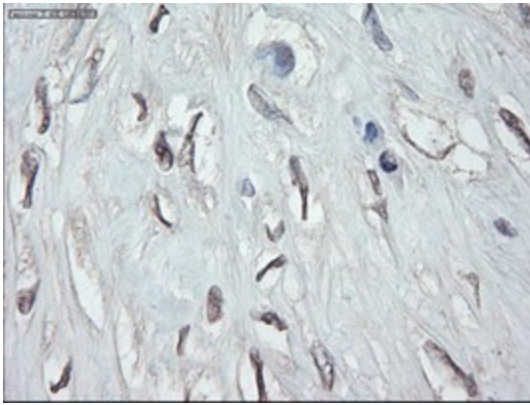
Immunofluorescent staining of HeLa cells using anti-GATA4 mouse monoclonal antibody ([TA500091]).



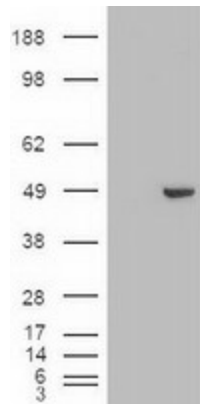
Anti-GATA4 mouse monoclonal antibody ([TA500091]) immunofluorescent staining of COS7 cells transiently transfected by pCMV6-ENTRY GATA4 ([RC210945]).



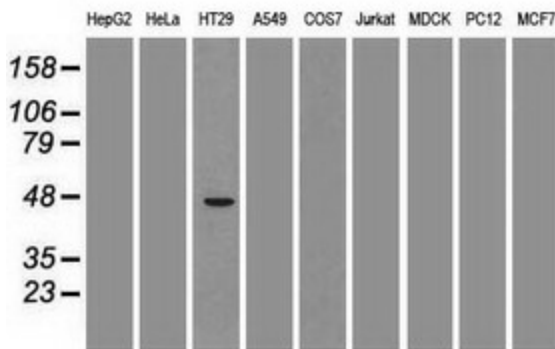
Immunohistochemical staining of paraffin-embedded Human endometrium tissue within the normal limits using anti-GATA4 mouse monoclonal antibody. (Heat-induced epitope retrieval by 10mM citric buffer, pH6.0, 100°C for 10min, [TA500091])



Immunohistochemical staining of paraffin-embedded Carcinoma of Human pancreas tissue using anti-GATA4 mouse monoclonal antibody. (Heat-induced epitope retrieval by 10mM citric buffer, pH6.0, 100°C for 10min, [TA500091])



HEK293T cells were transfected with the pCMV6-ENTRY control (Cat# [PS100001], Left lane) or pCMV6-ENTRY GATA4 (Cat# [RC210945], Right lane) cDNA for 48 hrs and lysed. Equivalent amounts of cell lysates (5 ug per lane) were separated by SDS-PAGE and immunoblotted with anti-GATA4(Cat# [TA500091]). Positive lysates [LY419558] (100ug) and [LC419558] (20ug) can be purchased separately from OriGene.



Western blot analysis of extracts (35ug) from 9 different cell lines by using anti-GATA4 monoclonal antibody.