

Product datasheet for **TA500077M**

MAPK6 Mouse Monoclonal Antibody [Clone ID: OTI5E1]

Product data:

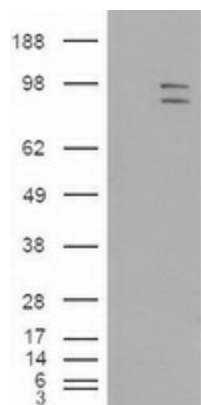
Product Type:	Primary Antibodies
Clone Name:	OTI5E1
Applications:	IF, WB
Recommended Dilution:	WB: 1:1000, IF (1:100)
Reactivity:	Human, Mouse, Rat
Host:	Mouse
Isotype:	IgG2a
Clonality:	Monoclonal
Immunogen:	Recombinant protein expressed in E.coli corresponding to amino acids 345-721 of human ERK3
Formulation:	PBS (pH 7.3) containing 1% BSA, 50% glycerol and 0.02% sodium azide.
Concentration:	1 mg/ml
Purification:	Purified from mouse ascites fluids or tissue culture supernatant by affinity chromatography (protein A/G)
Conjugation:	Unconjugated
Storage:	Store at -20°C as received.
Stability:	Stable for 12 months from date of receipt.
Predicted Protein Size:	82.5 kDa
Gene Name:	mitogen-activated protein kinase 6
Database Link:	NP_002739 Entrez Gene 50772 Mouse Entrez Gene 58840 Rat Entrez Gene 5597 Human Q16659
Background:	ERK3 is a member of the Ser/Thr protein kinase family, and is most closely related to mitogen-activated protein kinases (MAP kinases). MAP kinases also known as extracellular signal-regulated kinases (ERKs), are activated through protein phosphorylation cascades and act as integration points for multiple biochemical signals. This kinase is localized in the nucleus, and has been reported to be activated in fibroblasts upon treatment with serum or phorbol esters


[View online »](#)

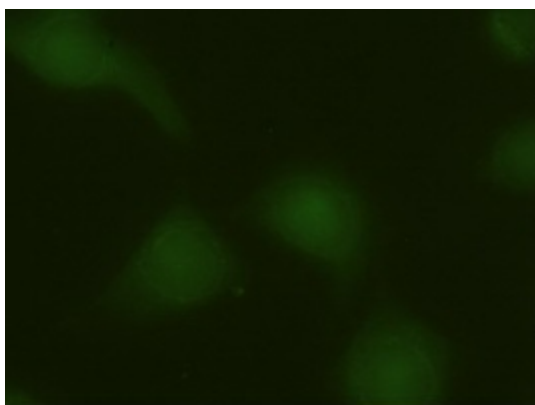
Synonyms: ERK3; HsT17250; p97MAPK; PRKM6

Protein Families: Druggable Genome, ES Cell Differentiation/IPS, Protein Kinase

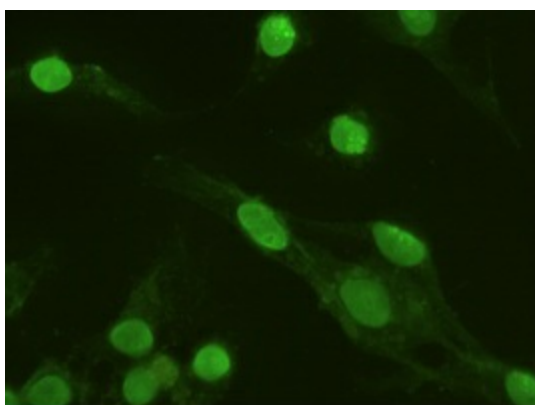
Product images:



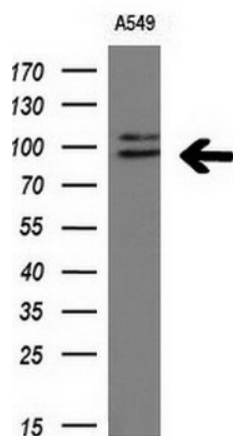
HEK293T cells were transfected with the pCMV6-ENTRY control (Cat# [PS100001], Left lane) or pCMV6-ENTRY MAPK6 (Cat# [RC201597], Right lane) cDNA for 48 hrs and lysed. Equivalent amounts of cell lysates (5 ug per lane) were separated by SDS-PAGE and immunoblotted with anti-MAPK6 (Cat# [TA500077]). Positive lysates [LY400969] (100ug) and [LC400969] (20ug) can be purchased separately from OriGene.



Immunofluorescent staining of HeLa cells using anti-MAPK6 mouse monoclonal antibody ([TA500077]).



Anti-MAPK6 mouse monoclonal antibody ([TA500077]) immunofluorescent staining of HeLa cells transiently transfected by pCMV6-ENTRY MAPK6 ([RC201597])



Western blot analysis of extracts (10ug) from 1 cell line by using anti-MAPK6 monoclonal antibody at 1:200 dilution.