

Product datasheet for **TA500074BM**

Apolipoprotein M (APOM) Mouse Monoclonal Antibody (HRP conjugated) [Clone ID: OTI3H3]

Product data:

| | |
|--------------------------------|--|
| Product Type: | Primary Antibodies |
| Clone Name: | OTI3H3 |
| Applications: | IHC, WB |
| Recommended Dilution: | WB: 1:1000, IHC 1;50 |
| Reactivity: | Human |
| Host: | Mouse |
| Isotype: | IgG2b |
| Clonality: | Monoclonal |
| Immunogen: | Recombinant protein expressed in E.coli corresponding to amino acids 23-188 of human APOM |
| Formulation: | PBS (pH 7.3) containing 1% BSA, 50% glycerol. |
| Concentration: | 0.5 mg/ml |
| Purification: | Purified from mouse ascites fluids or tissue culture supernatant by affinity chromatography (protein A/G) |
| Conjugation: | HRP |
| Storage: | Store at -20°C as received. |
| Stability: | Stable for 12 months from date of receipt. |
| Predicted Protein Size: | 21.1 kDa |
| Gene Name: | apolipoprotein M |
| Database Link: | NP_061974 Entrez Gene 55937 Human O95445 |
| Background: | The APOM is an apolipoprotein and member of the lipocalin protein family. It is found associated with high density lipoproteins and to a lesser extent with low density lipoproteins and triglyceride-rich lipoproteins. The encoded protein is secreted through the plasma membrane but remains membrane-bound, where it is involved in lipid transport. Two transcript variants encoding two different isoforms have been found for this gene, but only one of them has been fully characterized |

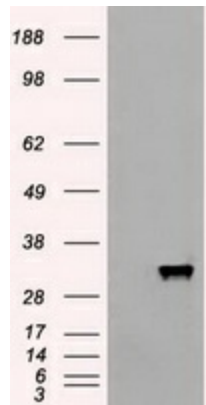


[View online »](#)

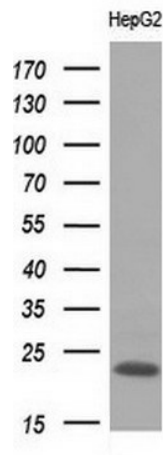
Synonyms: apo-M; G3a; HSPC336; NG20

Protein Families: Secreted Protein

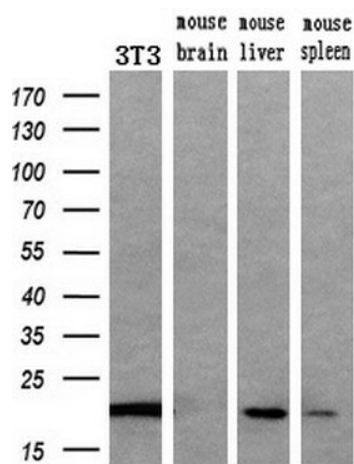
Product images:



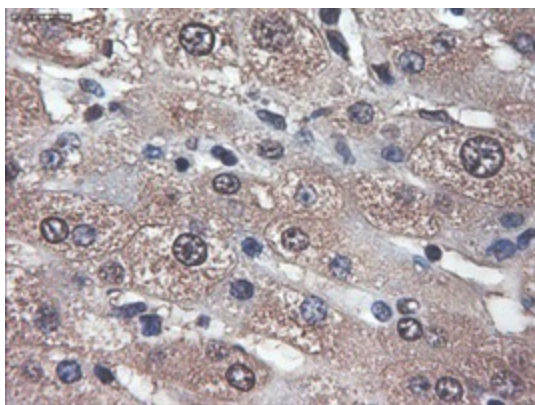
HEK293T cells were transfected with the pCMV6-ENTRY control (Cat# [PS100001], Left lane) or pCMV6-ENTRY APOM (Cat# [RC204679], Right lane) cDNA for 48 hrs and lysed. Equivalent amounts of cell lysates (5 ug per lane) were separated by SDS-PAGE and immunoblotted with anti-APOM(Cat# [TA500074]). Positive lysates [LY402735] (100ug) and [LC402735] (20ug) can be purchased separately from OriGene.



Western blot analysis of extracts (10ug) from 1 cell line by using anti-APOM monoclonal antibody at 1:200 dilution.



Western blot analysis of extracts (10ug) from a mouse cell line and 3 different mouse tissues by using anti-APOM monoclonal antibody (1:200).



Immunohistochemical staining of paraffin-embedded liver within the normal limits using anti-APOM ([TA500074]) mouse monoclonal antibody (Heat-induced epitope retrieval by 10mM citric buffer, pH6.0, 100°C for 10min).