

## Product datasheet for **TA500073BM**

### FOXA2 Mouse Monoclonal Antibody (HRP conjugated) [Clone ID: OTI3C10]

#### Product data:

Product Type:	Primary Antibodies
Clone Name:	OTI3C10
Applications:	FC, IF, IHC, WB
Recommended Dilution:	WB: 1:1000; IHC: 1:50; IF: 1:50-1:100; Flow 1:1,000
Reactivity:	Human, Mouse, Rat
Host:	Mouse
Isotype:	IgG1
Clonality:	Monoclonal
Immunogen:	Recombinant protein expressed in E.coli corresponding to amino acids 300-458 of human FOXA2
Formulation:	PBS (pH 7.3) containing 1% BSA, 50% glycerol.
Concentration:	0.5 mg/ml
Purification:	Purified from mouse ascites fluids or tissue culture supernatant by affinity chromatography (protein A/G)
Conjugation:	HRP
Storage:	Store at -20°C as received.
Stability:	Stable for 12 months from date of receipt.
Predicted Protein Size:	48.1 kDa
Gene Name:	forkhead box A2
Database Link:	<a href="#">NP_710141</a> <a href="#">Entrez Gene 15376 Mouse</a> <a href="#">Entrez Gene 25099 Rat</a> <a href="#">Entrez Gene 3170 Human</a> <a href="#">Q9Y261</a>
Background:	FOXA2 is a member of the forkhead class of DNA-binding proteins. These hepatocyte nuclear factors are transcriptional activators for liver-specific genes such as albumin and transthyretin, and they also interact with chromatin. Similar family members in mice have roles in the regulation of metabolism and in the differentiation of the pancreas and liver. This gene has been linked to sporadic cases of maturity-onset diabetes of the young. Transcript variants encoding different isoforms have been identified for this gene



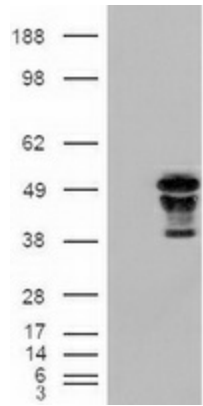
[View online »](#)

**Synonyms:** HNF3B; TCF3B

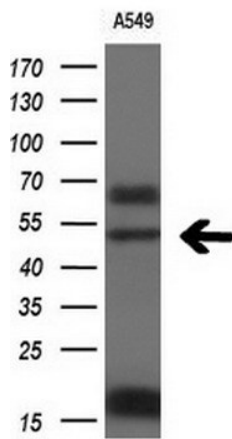
**Protein Families:** Embryonic stem cells, ES Cell Differentiation/IPS, Induced pluripotent stem cells, Transcription Factors

**Protein Pathways:** Maturity onset diabetes of the young

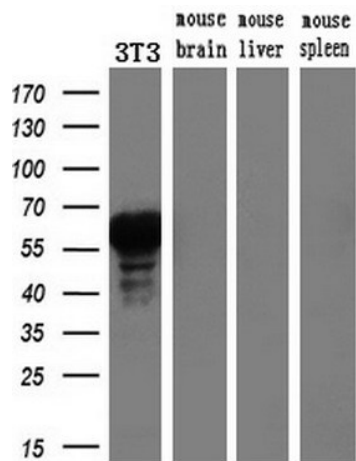
**Product images:**



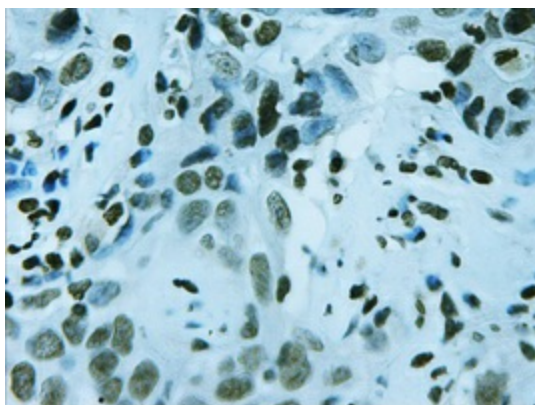
HEK293T cells were transfected with the pCMV6-ENTRY control (Cat# [PS100001], Left lane) or pCMV6-ENTRY FOXA2 (Cat# [RC211408], Right lane) cDNA for 48 hrs and lysed. Equivalent amounts of cell lysates (5 ug per lane) were separated by SDS-PAGE and immunoblotted with anti-FOXA2 (Cat# [TA500073]). Positive lysates [LY407005] (100ug) and [LC407005] (20ug) can be purchased separately from OriGene.



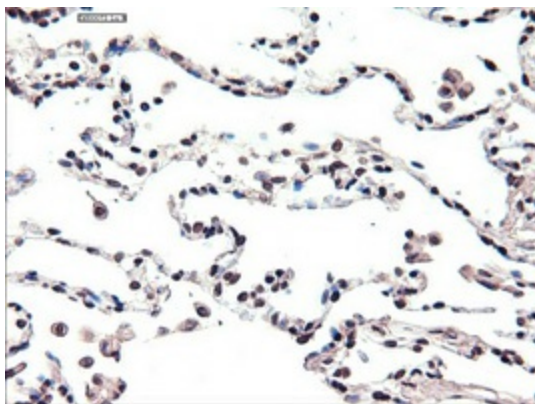
Western blot analysis of extracts (10ug) from 1 cell line by using anti-FOXA2 monoclonal antibody at 1:200 dilution.



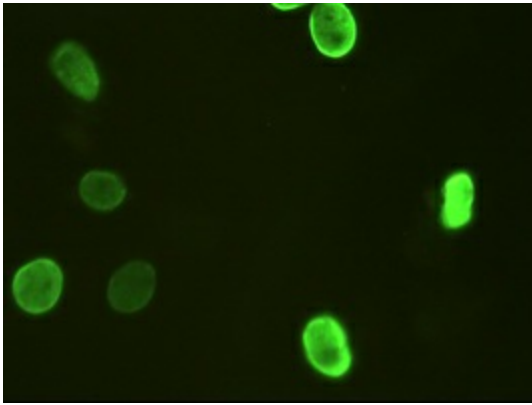
Western blot analysis of extracts (10ug) from a mouse cell line and 3 different mouse tissues by using anti-FOXA2 monoclonal antibody (1:200).



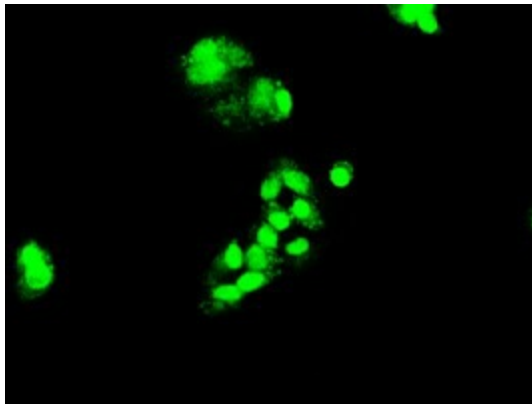
Immunohistochemical staining of paraffin-embedded Carcinoma of liver using anti-FOXA2 ([TA500073]) mouse monoclonal antibody (Heat-induced epitope retrieval by 10mM citric buffer, pH6.0, 100°C for 10min).



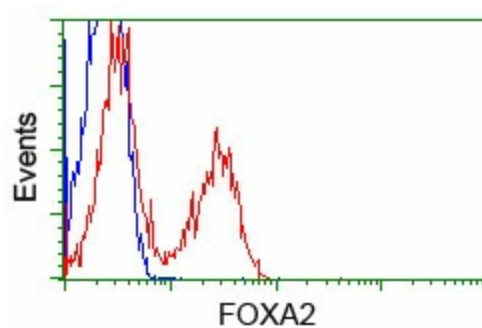
Immunohistochemical staining of paraffin-embedded lung within the normal limits using anti-FOXA2 ([TA500073]) mouse monoclonal antibody (Heat-induced epitope retrieval by 10mM citric buffer, pH6.0, 100°C for 10min).



Anti-FOXA2 mouse monoclonal antibody ([TA500073]) immunofluorescent staining of HeLa cells transiently transfected by pCMV6-ENTRY FOXA2 ([RC211408])



Immunofluorescent staining of HepG2 cells using anti-FOXA2 mouse monoclonal antibody ([TA500073]) at 1:50 dilution.



HEK293T cells transfected with either pCMV6-ENTRY FOXA2 ([RC211408]) (Red) or empty vector control plasmid (Blue) were immunostained with anti-FOXA2 mouse monoclonal ([TA500073], Dilution 1:1,000), and then analyzed by flow cytometry.