

Product datasheet for **TA500071**

IL6 Mouse Monoclonal Antibody [Clone ID: OTI3H6]

Product data:

Product Type:	Primary Antibodies
Clone Name:	OTI3H6
Applications:	IF, WB
Recommended Dilution:	WB 1:1000; IF 1:100
Reactivity:	Human
Host:	Mouse
Isotype:	IgG1
Clonality:	Monoclonal
Immunogen:	Human recombinant protein fragment corresponding to amino acids 29-212 of human IL-6 (NP_000591) produced in E.coli.
Formulation:	PBS (pH 7.3) containing 1% BSA, 50% glycerol and 0.02% sodium azide.
Concentration:	1 mg/ml
Purification:	Purified from mouse ascites fluids or tissue culture supernatant by affinity chromatography (protein A/G)
Conjugation:	Unconjugated
Storage:	Store at -20°C as received.
Stability:	Stable for 12 months from date of receipt.
Predicted Protein Size:	23.5 kDa
Gene Name:	interleukin 6
Database Link:	NP_000591 Entrez Gene 3569 Human P05231
Background:	This gene encodes a cytokine that functions in inflammation and the maturation of B cells. The protein is primarily produced at sites of acute and chronic inflammation, where it is secreted into the serum and induces a transcriptional inflammatory response through interleukin 6 receptor, alpha. The functioning of this gene is implicated in a wide variety of inflammation-associated disease states, including susceptibility to diabetes mellitus and systemic juvenile rheumatoid arthritis.



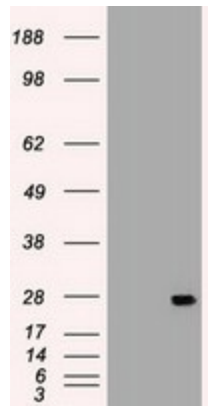
[View online »](#)

Synonyms: BSF-2; BSF2; CDF; HGF; HSF; IFN-beta-2; IFNB2; IL-6

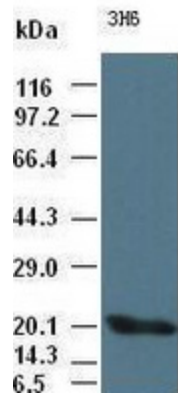
Protein Families: Druggable Genome, Secreted Protein

Protein Pathways: Cytokine-cytokine receptor interaction, Cytosolic DNA-sensing pathway, Graft-versus-host disease, Hematopoietic cell lineage, Hypertrophic cardiomyopathy (HCM), Jak-STAT signaling pathway, NOD-like receptor signaling pathway, Pathways in cancer, Prion diseases, Toll-like receptor signaling pathway

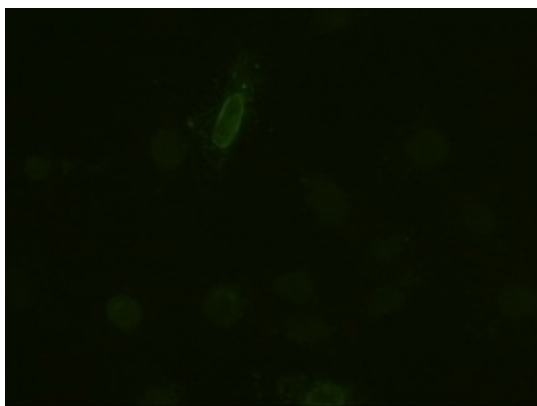
Product images:



HEK293T cells were transfected with the pCMV6-ENTRY control (Left lane) or pCMV6-ENTRY IL-6 ([RC202078], Right lane) cDNA for 48 hrs and lysed. Equivalent amounts of cell lysates (5 ug per lane) were separated by SDS-PAGE and immunoblotted with anti-IL-6. Positive lysates [LY424617] (100ug) and [LC424617] (20ug) can be purchased separately from OriGene.



IL-6 antibody (3H6) at 1:2000 + recombinant human IL-6 (Cat# [RC202078])



Anti-IL-6 mouse monoclonal antibody (TA500071) immunofluorescent staining of HELA cells transiently transfected by pCMV6-ENTRY IL-6 ([RC202078]).