

## Product datasheet for **TA500068AM**

### alpha 1 Antitrypsin (SERPINA1) Mouse Monoclonal Antibody (Biotin conjugated) [Clone ID: OTI1C2]

#### Product data:

Product Type:	Primary Antibodies
Clone Name:	OTI1C2
Applications:	FC, IHC, WB
Recommended Dilution:	WB 1:500~1000, IHC 1:50, FLOW 1:100
Reactivity:	Human
Host:	Mouse
Isotype:	IgG2b
Clonality:	Monoclonal
Immunogen:	Human recombinant protein fragment corresponding to amino acids 26-418 of human A1AT (NP_000286) produced in E.coli.
Formulation:	PBS (pH 7.3) containing 1% BSA, 50% glycerol and 0.02% sodium azide.
Concentration:	0.5 mg/ml
Purification:	Purified from mouse ascites fluids or tissue culture supernatant by affinity chromatography (protein A/G)
Conjugation:	Biotin
Storage:	Store at -20°C as received.
Stability:	Stable for 12 months from date of receipt.
Predicted Protein Size:	46.6 kDa
Gene Name:	serpin family A member 1
Database Link:	<a href="#">NP_000286</a> <a href="#">Entrez Gene 5265 Human</a> <a href="#">P01009</a>
Background:	A1AT is secreted and is a serine protease inhibitor whose targets include elastase, plasmin, thrombin, trypsin, chymotrypsin, and plasminogen activator. Defects in A1AT gene can cause emphysema or liver disease. Several transcript variants encoding the same protein have been found for this gene.



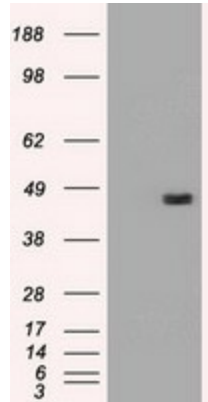
[View online »](#)

**Synonyms:** A1A; A1AT; AAT; alpha1AT; PI; PI1; PRO2275

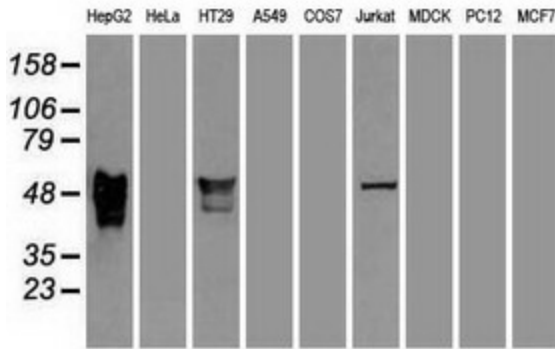
**Protein Families:** Druggable Genome, ES Cell Differentiation/IPS, Secreted Protein

**Protein Pathways:** Complement and coagulation cascades

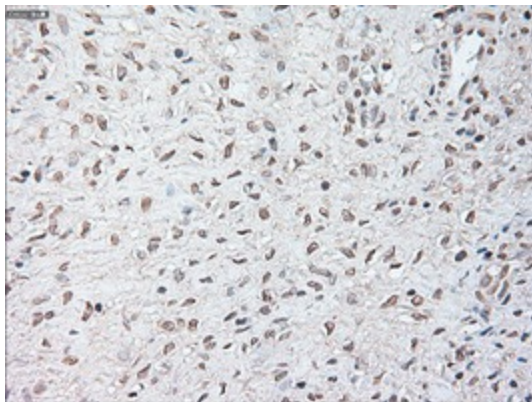
**Product images:**



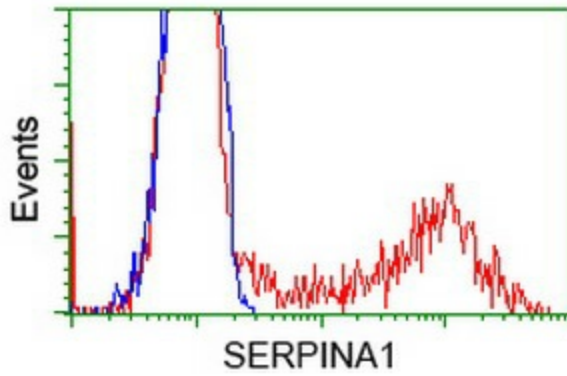
HEK293T cells were transfected with the pCMV6-ENTRY control (Left lane) or pCMV6-ENTRY SERPINA1 ([RC202082], Right lane) cDNA for 48 hrs and lysed. Equivalent amounts of cell lysates (5 ug per lane) were separated by SDS-PAGE and immunoblotted with anti-SERPINA1. Positive lysates [LY400112] (100ug) and [LC400112] (20ug) can be purchased separately from OriGene.



Western blot analysis of extracts (35ug) from 9 different cell lines by using anti-SERPINA1 monoclonal antibody.



Immunohistochemical staining of paraffin-embedded Human Ovary tissue within the normal limits using anti-SERPINA1 mouse monoclonal antibody. (Heat-induced epitope retrieval by 10mM citric buffer, pH6.0, 100°C for 10min, [TA500068])



HEK293T cells transfected with either [RC202082] overexpress plasmid (Red) or empty vector control plasmid (Blue) were immunostained by anti-SERPINA1 antibody ([TA500068]), and then analyzed by flow cytometry.