

Product datasheet for **TA500064S**

FGF1 Mouse Monoclonal Antibody [Clone ID: OTI4D2]

Product data:

| | |
|-------------------------|---|
| Product Type: | Primary Antibodies |
| Clone Name: | OTI4D2 |
| Applications: | IF, WB |
| Recommended Dilution: | WB 1:5000~50000, IF 1:100 |
| Reactivity: | Human, Mouse, Rat |
| Host: | Mouse |
| Isotype: | IgG1 |
| Clonality: | Monoclonal |
| Immunogen: | Human recombinant protein fragment corresponding to amino acids 16-155 of human AFGF (NP_000791) produced in E.coli. |
| Formulation: | PBS (pH 7.3) containing 1% BSA, 50% glycerol and 0.02% sodium azide. |
| Concentration: | 1 mg/ml |
| Purification: | Purified from mouse ascites fluids or tissue culture supernatant by affinity chromatography (protein A/G) |
| Conjugation: | Unconjugated |
| Storage: | Store at -20°C as received. |
| Stability: | Stable for 12 months from date of receipt. |
| Predicted Protein Size: | 15.8 kDa |
| Gene Name: | fibroblast growth factor 1 |
| Database Link: | NP_000791 Entrez Gene 14164 Mouse Entrez Gene 25317 Rat Entrez Gene 2246 Human P05230 |



[View online »](#)

Background:

FGF1 is a member of the fibroblast growth factor (FGF) family. FGF family members possess broad mitogenic and cell survival activities, and are involved in a variety of biological processes, including embryonic development, cell growth, morphogenesis, tissue repair, tumor growth and invasion. This protein functions as a modifier of endothelial cell migration and proliferation, as well as an angiogenic factor. It acts as a mitogen for a variety of mesoderm- and neuroectoderm-derived cells in vitro, thus is thought to be involved in organogenesis. Three alternatively spliced variants encoding different isoforms have been described.

Synonyms:

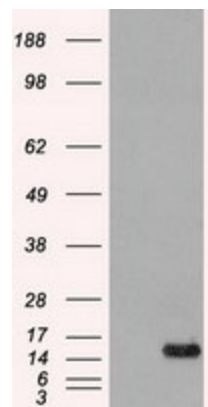
AFGF; ECGF; ECGF-beta; ECGFA; ECGFB; FGF-1; FGF-alpha; FGFA; GLIO703; HBGF-1; HBGF1

Protein Families:

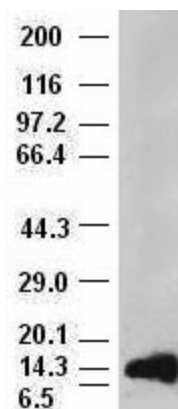
Druggable Genome, Secreted Protein

Protein Pathways:

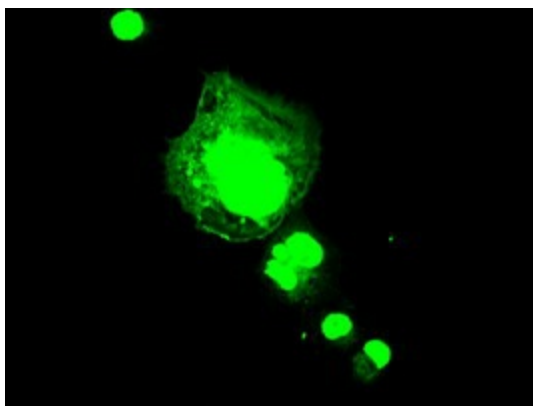
MAPK signaling pathway, Melanoma, Pathways in cancer, Regulation of actin cytoskeleton

Product images:


HEK293T cells were transfected with the pCMV6-ENTRY control (Cat# [PS100001], Left lane) or pCMV6-ENTRY AFGF (Cat# [RC207434], Right lane) cDNA for 48 hrs and lysed. Equivalent amounts of cell lysates (5 ug per lane) were separated by SDS-PAGE and immunoblotted with anti-AFGF (Cat# [TA500064]). Positive lysates [LY400278] (100ug) and [LC400278] (20ug) can be purchased separately from OriGene.



aFGF antibody (4D2) at 1:50000 dilution + recombinant Human aFGF (Cat# [RC207434])



Anti-AFGF mouse monoclonal antibody ([TA500064]) immunofluorescent staining of COS7 cells transiently transfected by pCMV6-ENTRY AFGF ([RC207434]).