

## Product datasheet for **TA500064BM**

### FGF1 Mouse Monoclonal Antibody (HRP conjugated) [Clone ID: OTI4D2]

#### Product data:

Product Type:	Primary Antibodies
Clone Name:	OTI4D2
Applications:	IF, WB
Recommended Dilution:	WB 1:5000~50000, IF 1:100
Reactivity:	Human, Mouse, Rat
Host:	Mouse
Isotype:	IgG1
Clonality:	Monoclonal
Immunogen:	Human recombinant protein fragment corresponding to amino acids 16-155 of human AFGF (NP_000791) produced in E.coli.
Formulation:	PBS (pH 7.3) containing 1% BSA, 50% glycerol.
Concentration:	0.5 mg/ml
Purification:	Purified from mouse ascites fluids or tissue culture supernatant by affinity chromatography (protein A/G)
Conjugation:	HRP
Storage:	Store at -20°C as received.
Stability:	Stable for 12 months from date of receipt.
Predicted Protein Size:	15.8 kDa
Gene Name:	fibroblast growth factor 1
Database Link:	<a href="#">NP_000791</a> <a href="#">Entrez Gene 14164 Mouse</a> <a href="#">Entrez Gene 25317 Rat</a> <a href="#">Entrez Gene 2246 Human</a> <a href="#">P05230</a>



[View online »](#)

**Background:**

FGF1 is a member of the fibroblast growth factor (FGF) family. FGF family members possess broad mitogenic and cell survival activities, and are involved in a variety of biological processes, including embryonic development, cell growth, morphogenesis, tissue repair, tumor growth and invasion. This protein functions as a modifier of endothelial cell migration and proliferation, as well as an angiogenic factor. It acts as a mitogen for a variety of mesoderm- and neuroectoderm-derived cells in vitro, thus is thought to be involved in organogenesis. Three alternatively spliced variants encoding different isoforms have been described.

**Synonyms:**

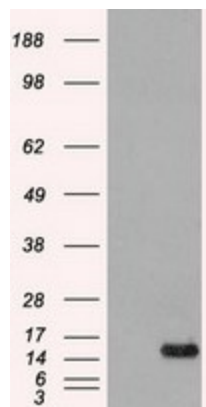
AFGF; ECGF; ECGF-beta; ECGFA; ECGFB; FGF-1; FGF-alpha; FGFA; GLIO703; HBGF-1; HBGF1

**Protein Families:**

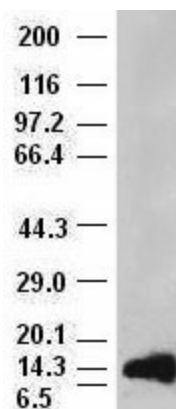
Druggable Genome, Secreted Protein

**Protein Pathways:**

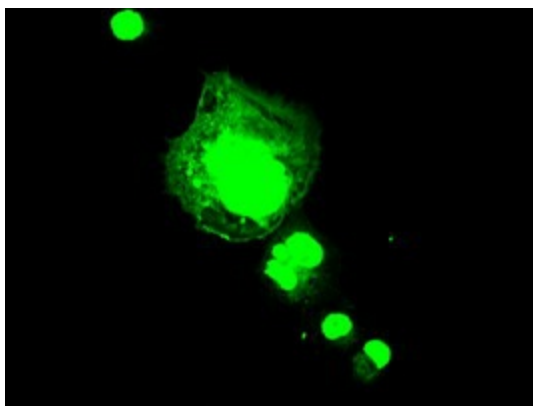
MAPK signaling pathway, Melanoma, Pathways in cancer, Regulation of actin cytoskeleton

**Product images:**


HEK293T cells were transfected with the pCMV6-ENTRY control (Cat# [PS100001], Left lane) or pCMV6-ENTRY AFGF (Cat# [RC207434], Right lane) cDNA for 48 hrs and lysed. Equivalent amounts of cell lysates (5 ug per lane) were separated by SDS-PAGE and immunoblotted with anti-AFGF (Cat# [TA500064]). Positive lysates [LY400278] (100ug) and [LC400278] (20ug) can be purchased separately from OriGene.



aFGF antibody ( 4D2 ) at 1:50000 dilution + recombinant Human aFGF (Cat# [RC207434])



Anti-AFGF mouse monoclonal antibody ([TA500064]) immunofluorescent staining of COS7 cells transiently transfected by pCMV6-ENTRY AFGF ([RC207434]).