

Product datasheet for **TA500057AM**

Cardiac Troponin I (TNNI3) Mouse Monoclonal Antibody (Biotin conjugated) [Clone ID: OTI4E5]

Product data:

Product Type:	Primary Antibodies
Clone Name:	OTI4E5
Applications:	IF, WB
Recommended Dilution:	WB 1:2500~5000, IF 1:50~100
Reactivity:	Human, Dog, Monkey, Mouse, Rat
Host:	Mouse
Isotype:	IgG1
Clonality:	Monoclonal
Immunogen:	Full length human recombinant protein of human TNNI3 (NP_000354) produced in E.coli.
Formulation:	PBS (pH 7.3) containing 1% BSA, 50% glycerol and 0.02% sodium azide.
Concentration:	0.5 mg/ml
Purification:	Purified from mouse ascites fluids or tissue culture supernatant by affinity chromatography (protein A/G)
Conjugation:	Biotin
Storage:	Store at -20°C as received.
Stability:	Stable for 12 months from date of receipt.
Predicted Protein Size:	23.8 kDa
Gene Name:	troponin I3, cardiac type
Database Link:	NP_000354 Entrez Gene 21954 Mouse Entrez Gene 29248 Rat Entrez Gene 403566 Dog Entrez Gene 698470 Monkey Entrez Gene 7137 Human P19429



[View online »](#)

Background:

Troponin I (TnI), along with troponin T (TnT) and troponin C (TnC), is one of 3 subunits that form the troponin complex of the thin filaments of striated muscle. TnI is the inhibitory subunit; blocking actin-myosin interactions and thereby mediating striated muscle relaxation. The TnI subfamily contains three genes: TnI-skeletal-fast-twitch, TnI-skeletal-slow-twitch, and TnI-cardiac. This gene encodes the TnI-cardiac protein and is exclusively expressed in cardiac muscle tissues. Mutations in this gene cause familial hypertrophic cardiomyopathy type 7 (CMH7) and familial restrictive cardiomyopathy (RCM).

Synonyms:

CMD1FF; CMD2A; CMH7; cTnI; RCM1; TNNC1

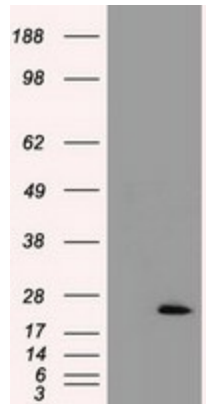
Protein Families:

Druggable Genome, ES Cell Differentiation/IPS, Stem cell - Pluripotency

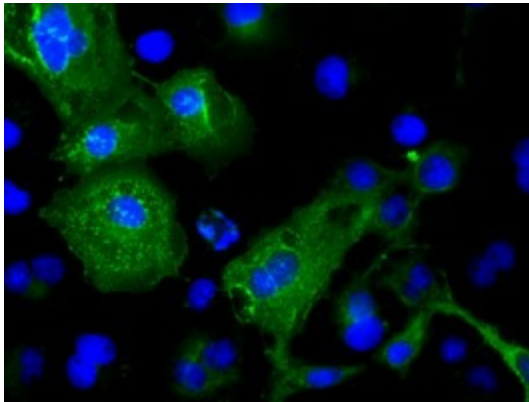
Protein Pathways:

Cardiac muscle contraction, Dilated cardiomyopathy, Hypertrophic cardiomyopathy (HCM)

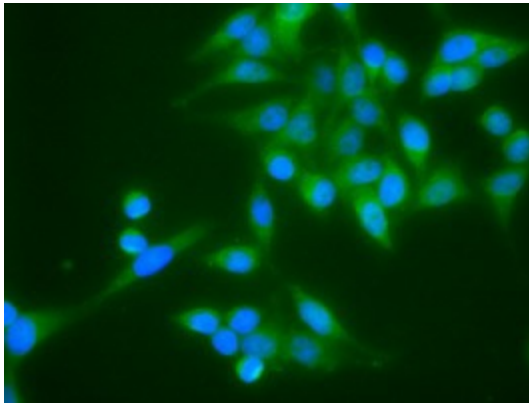
Product images:



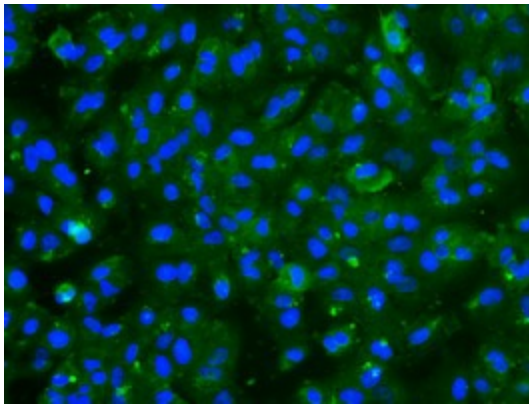
HEK293T cells were transfected with the pCMV6-ENTRY control (Left lane) or pCMV6-ENTRY TNNI3 ([RC214740], Right lane) cDNA for 48 hrs and lysed. Equivalent amounts of cell lysates (5 ug per lane) were separated by SDS-PAGE and immunoblotted with anti-TNNI3. Positive lysates [LY424766] (100ug) and [LC424766] (20ug) can be purchased separately from OriGene.



Anti-TNNI3 mouse monoclonal antibody ([TA500057]) immunofluorescent staining of COS7 cells transiently transfected by pCMV6-ENTRY TNNI3 ([RC214740]).



Immunofluorescent staining of HeLa cells using anti-TNNI3 mouse monoclonal antibody ([TA500057]).



Immunofluorescent staining of A549 cells using anti-TNNI3 mouse monoclonal antibody ([TA500057]).